

Wool Weekly

LANDMARK

Friday, 29 June 2018

Wool Market Movements

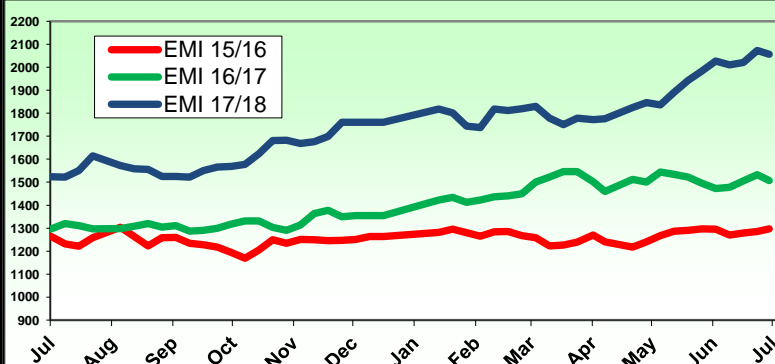
- The Australian wool market was a little weaker this week after the sharp rise last week as buyers became more selective. In the last sale for 2017/18, prices for both Merino wool and Crossbred wool eased back in the eastern centres, although the better specc'd lots of Merino wool generally held their own. Fremantle returned from a one week lay-off, and prices rose to catch up with the eastern states. The EMI slid 17 cents for the week. Even so, it closed the 2017/18 season at 2056 c/kg, a massive 531 cents above the close of the 2016/17 season. The AUD remained low at around 73 UScents and the EMI was 6 UScents lower at 1520 USc/kg (up 366 UScents for the 2017/18 season). There were 31,784 bales offered for the week and the pass-in rate increased to 6.1%.
- The last Sydney sale for the season started slowly as buyers became more selective with 10,581 bales on offer. Prices generally fell back on Wednesday by around 20 cents for both Merino and Crossbred wool. The Merino lots with good strength, low mid-break and low VM did best. Buyers were more interested in the Merino lots on offer on Thursday and prices rose, recovering some of the lost ground. Well prepared Crossbred lots also attracted attention, but poorer prepared lots fell back. Prices for Oddments slid back on both days.
- There were 16,396 bales on offer at Melbourne's last auction for 2017/18 this week. Prices for all Merino wool fell back on both days as buyers became more cautious after last week's large increases. Well-specc'd lots with high strength, low VM and low mid-breaks held their ground, but other types eased. Finer wool recorded the largest falls of 30-50 cents for the week. Prices for 19 micron and broader wool were down by 5-15 cents, although 21 micron wool lifted a little. Locks, Stains and Crutchings were lower over the week, with the most significant falls seen for Stains.
- Auctions resumed this week in Fremantle after a week's lay-off, with 4,807 bales on offer. Prices lifted sharply on Wednesday to catch up with the prices recorded by the end of last week in the eastern states. Merino fleece prices rose by between 50 to 90 cents, while Oddments were 5-15 cents higher. Thursday's sale saw a very small offering and prices stabilise at around the higher levels achieved on Wednesday, with some ups and downs depending on the micron. The limited offering of Oddments were a little cheaper.

AWEX WEEKLY WOOL PRICES

Regional Indicator	North	Wkly Chg	South	Wkly Chg	West	Wkly Chg
c/kg clean	2088	-22	2035	-15	2243	+55
MICRON PRICE GUIDES						
16.5	-	-	3019n	-42	-	-
17	2872n	+3	2867	-36	-	-
17.5	2702n	0	2683	-43	-	-
18	2524	-14	2513	-45	-	-
18.5	2394	-19	2396	-31	2423n	+41
19	2368	-6	2369	-10	2396	+74
19.5	2349	-21	2364	-14	2367	+86
20	2346	-10	2351	-12	2363	+84
21	2334n	+10	2350	+6	2347n	+74
22	2328n	-	2336n	-4	-	-
23	-	-	-	-	-	-
24	-	-	-	-	-	-
25	-	-	-	-	-	-
26	1535n	-10	-	-	-	-
28	1029	-23	1028	-20	-	-
30	705	-4	695	-4	-	-
32	-	-	448n	-3	-	-
MC	1482	-13	1500n	-13	1487n	+7

AWEX EMI 2015/16 & 2016/17 Season vs Current

Currently: 2056 c/kg clean



Upcoming Auction Volumes

	2/07/2018	9/07/2018	16/07/2018
Northern	S01	S02	S03
Sydney	15,929	11,675	RECESS
Southern	M01	M02	M03
Melbourne	18,246	19,920	RECESS
Western	F01	F02	F03
Fremantle	9,057	4,830	RECESS
Total	43,232	36,425	RECESS

THIS WEEK'S SALES STATISTICS

Centre	Bales Originally	Bales Offered	Bales Sold	Pass in Rate
Northern	10,185	10,581	9,887	6.6%
Southern	17,550	16,396	15,472	5.6%
Western	5,650	4,807	4,471	7.0%
TOTAL	33,385	31,784	29,830	6.1%

29 Jun 2018

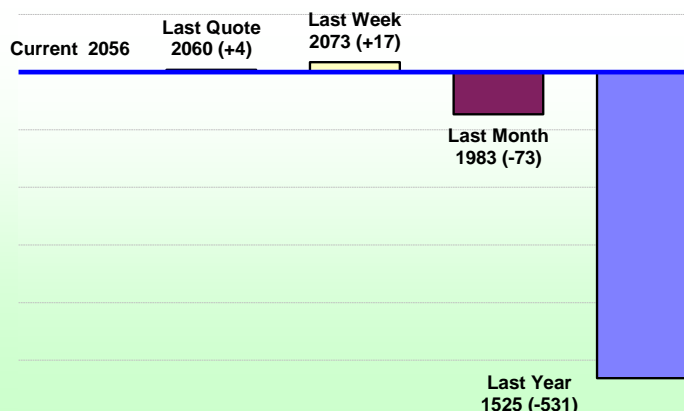
Landmark Wool Report

EMI 2056 NMI 2088 SMI 2035 WMI 2243



Average Nth-Sth MPG's as reported on 28 Jun 2018

AWEX Weekly Eastern Market Indicator



AUD vs USD from 06-Jul-04 to 28-Jun-18



Micron	EMI	16.5	17	17.5	18	18.5	19	19.5	20	21	22	23	25	28	AUD
Current MPG's	2056	3019	2870	2693	2519	2395	2369	2357	2349	2342	2332	-	-	1029	0.736
10 year Average	1046	1694	1516	1522	1388	1325	1255	1194	1139	1098	1066	1037	843	596	0.845
This time last year	1525	2202	2187	2154	2109	2000	1862	1722	1626	1545	1476	1434	1144	761	0.766
10 year High	2073	3097	2887	2750	2549	2420	2377	2374	2360	2342	2340	2250	1704	1050	1.090
10 year Low	632	1259	1073	1087	881	833	777	736	686	659	654	646	549	339	0.604
% Reported above current	0%	1%	0%	1%	0%	0%	0%	0%	0%	0%	0%	0%	0%	0%	87%
Diff b/w High & Current	17	78	17	58	31	25	8	18	11	0	8	-	-	22	0.354
Diff b/w Ave & Current	1010	1325	1353	1170	1131	1070	1113	1162	1210	1244	1266	-	-	432	-0.109

Percentile Bands

	1574	2623	2472	2381	2210	2100	1951	1798	1671	1590	1517	1468	1639	861	1.048
95%	1424	2465	2274	2228	2075	1908	1752	1653	1546	1469	1421	1375	1447	814	1.030
90%	1267	1941	1680	1677	1551	1507	1474	1431	1379	1345	1312	1283	1289	735	0.955
80%	1225	1806	1571	1589	1504	1460	1411	1374	1336	1308	1269	1233	1248	683	0.932
75%	1065	1567	1440	1469	1360	1301	1245	1197	1172	1159	1146	1125	1080	636	0.874
60%	1006	1518	1375	1383	1280	1241	1188	1145	1106	1075	1047	1016	1028	563	0.799
50%	930	1477	1314	1317	1222	1178	1117	1069	1013	970	935	897	954	486	0.775
40%	822	1414	1248	1254	1140	1080	1012	948	882	825	801	779	836	468	0.756
25%	730	1334	1178	1183	1031	996	929	865	805	749	717	698	747	449	0.723
10%															

Indicative Basis Contract Prices

Date	MPG	17	17.5	18	18.5	19	19.5	20	21	22	23	28	
Jul-2018		2575	2470	2400	2330	2250	2245	2240	2230	2200	2140	950	All prices on this sheet are listed in c/kg clean. Basis Contract prices are indicative only. The levels are published to use purely as a guide. For more information regarding forward contracts or to submit a GTC or Target order, contact your local Landmark wool manager, or call Landmark Risk Management on 1800 629 396.
Aug-2018		2560	2450	2380	2310	2240	2235	2230	2220	2190	2130	930	
Sep-2018		2540	2445	2375	2305	2220	2215	2210	2200	2170	2110	920	
Oct-2018		2525	2370	2300	2230	2200	2165	2160	2150	2120	2060	920	
Nov-2018		2515	2420	2350	2280	2130	2115	2110	2100	2070	2010	910	
Dec-2018		2505	2410	2340	2270	2080	2085	2080	2070	2040	1980	900	
Jan-2019		2495	2390	2320	2250	2060	2065	2060	2050	2020	1960	880	
Feb-2019		2470	2380	2310	2240	2030	2015	2010	2000	1970	1910	870	
Mar-2019		2445	2340	2270	2200	2000	1995	1990	1980	1950	1890	860	
Apr-2019		2430	2330	2260	2190	1980	1985	1980	1970	1940	1880	830	
May-2019		2415	2320	2250	2180	1970	1985	1980	1970	1940	1880	800	
Jun-2019		2400	2320	2250	2180	1960	1965	1960	1950	1920	1860	750	
Jul-2019		2385	2300	2230	2160	1950	1955	1950	1940	1910	1850	720	
Aug-2019		2370	2270	2200	2130	1930	1945	1940	1930	1900	1840	700	
Sep-2019		2355	2270	2200	2130	1900	1915	1910	1900	1870	1810	700	

Please use above figures as a guide to submit your GTC or Target orders. Call 1800 629 396.