

# Wool Weekly

# LANDMARK

Friday, 23 November 2018

## Wool Market Movements

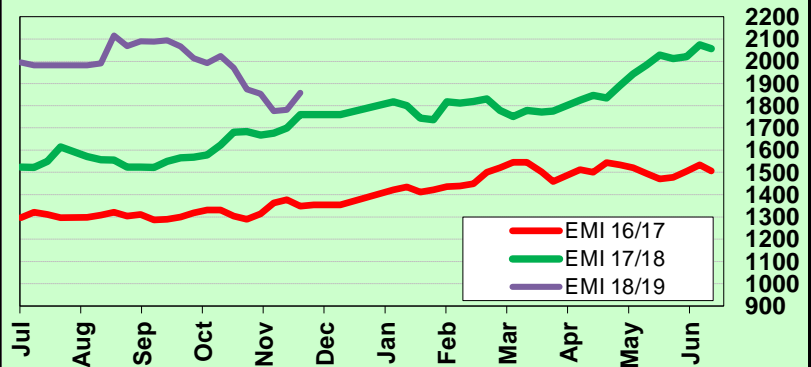
- The positive price trends that began late in last week's sales, continued at all three centres this week. The EMI rose by 77 cents to end the week at 1,858 c/kg clean. All Merino fleece types and descriptions rose across the three selling centres with medium micron wools leading the way. Skirtings also performed strongly this week, particularly those carrying low VM levels. Crossbred types gained with the finer lots recording the greatest increases. All three Merino Carding Indicators continued last week's rises adding an average of 67 cents. The national offering comprised 30,761 bales this week, of which 28,995 were sold at a pass in rate of 5.7%. Next week 36,447 bales are currently rostered for sale.
- Gains were made across all micron categories in Sydney this week. The 18 µm and broader microns received strong buyer support rising by 118 and 115 cents respectively. The 16.5 to 17.5 µm micron price guides rose by between 20 and 27 cents. Skirtings followed the trend set by the fleece lines, recording price increases for 40 to 80 cents for the week. Crossbred wools strengthened by up to 105 cents. The Northern Indicator rose by 79 cents to close at 1,898 c/kg clean. The Northern Carding Indicator rose by 80 cents for the week to 1,180 c/kg clean. Over 97% of the 7,852 bales offered were sold to the trade.
- The Melbourne market also recorded increased prices across all types and descriptions. Buyers continued to strongly support lots with high yields and high staple strength. Skirting wool improved, particularly those lots with <5% VM. Crossbred lots performed strongly with rises of up to 96 cents. The Southern Indicator finished at 1,832 c/kg clean, up 74 cents and the Southern Carding Indicator was up 69 cents to 1,183 c/kg clean. 4.5% of the 15,016 bales on offer passed in.
- The Fremantle market followed the pattern set by the eastern states markets and recorded strong gains for the week. The Western Indicator rose by 81 cents to 2,016 c/kg clean. The 18 µm fleece lots increased by 50 cents, with broader types increasing by at least 91 cents. Merino skirtings were all stronger. Washing lambs with <0.3% VM were in high demand, increasing by up to 90 cents each day. The Western Carding Indicator increased by 23 cents to 1,153 c/kg clean. 11.4% of the lots on offer in Fremantle were passed in.

## AWEX WEEKLY WOOL PRICES

Regional Indicator	North	Wkly Chg	South	Wkly Chg	West	Wkly Chg
c/kg clean	1898	+79	1832	+74	2016	+81
MICRON PRICE GUIDES						
16.5	2535	+15	2497n	+38	-	-
17	2472	+27	2448n	+45	-	-
17.5	2407	+20	2404	+31	-	-
18	2343	+65	2319	+71	2229n	+50
18.5	2274	+72	2271	+107	2203n	+100
19	2204	+100	2210	+110	2177	+91
19.5	2183	+118	2192	+111	2158	+97
20	2172	+115	2164	+93	2151	+99
21	2158	+110	2159	+101	2136	+94
22	-	-	2144n	+59	-	-
23	-	-	2127n	+106	-	-
24	-	-	1840n	+127	-	-
25	-	-	-	-	-	-
26	1245n	+105	-	-	-	-
28	845n	+85	861	+96	-	-
30	-	-	734	+50	-	-
32	-	-	495n	+15	-	-
MC	1180	+80	1183n	+69	1153n	+23

## AWEX EMI 2016/17 & 2017/18 Season vs Current

Currently: 1858 c/kg clean



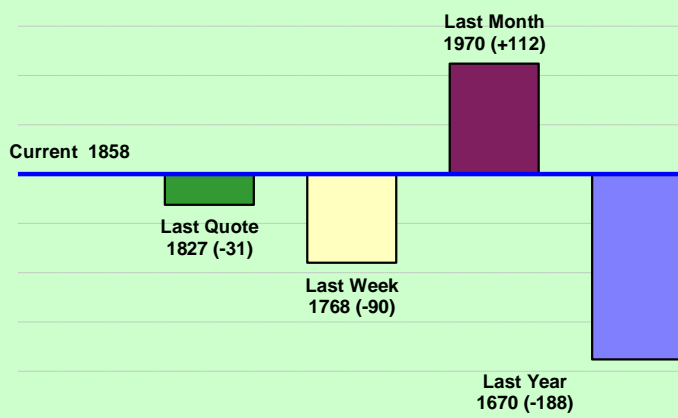
## Upcoming Auction Volumes

	27/11/2018	4/12/2018	11/12/2018
Northern	S22	S23	S24
Sydney	9,239	8,870	11,165
Southern	M22	M23	M24
Melbourne	19,441	19,758	21,568
Western	F22	F23	F24
Fremantle	7,767	8,150	8,150
<b>Total</b>	<b>36,447</b>	<b>36,778</b>	<b>40,883</b>

## THIS WEEK'S SALES STATISTICS

Centre	Bales Originally	Bales Offered	Bales Sold	Pass in Rate
Northern	9,665	7,852	7,660	2.4%
Southern	18,685	15,016	14,343	4.5%
Western	7,800	7,893	6,992	11.4%
<b>TOTAL</b>	<b>36,150</b>	<b>30,761</b>	<b>28,995</b>	<b>5.7%</b>

### AWEX Weekly Eastern Market Indicator Quote Comparisons



### AUD vs USD from 06-Jul-04 to 22-Nov-18



Micron	EMI	16.5	17	17.5	18	18.5	19	19.5	20	21	22	23	25	28	AUD
<b>Current MPG's</b>	1858	2516	2460	2406	2331	2273	2207	2188	2168	2159	2144	2127	-	853	0.725
<b>10 year Average</b>	1189	1777	1672	1608	1543	1476	1406	1344	1291	1258	1229	1196	1086	666	0.864
<b>This time last year</b>	1669	2523	2456	2381	2275	2094	1984	1869	1753	1637	1551	1526	1205	733	0.761
<b>10 year High</b>	2116	3187	3007	2831	2683	2569	2462	2414	2382	2354	2350	2308	2153	1050	1.090
<b>10 year Low</b>	721	1259	1152	1092	1021	955	887	802	723	672	662	647	631	423	0.604
<b>% Reported above current</b>	4%	14%	11%	9%	7%	4%	4%	4%	4%	4%	4%	3%	0%	10%	87%
<b>Diff b/w High &amp; Current</b>	258	671	547	426	352	296	255	226	214	196	206	181	-	197	0.365
<b>Diff b/w Ave &amp; Current</b>	669	739	788	797	788	797	801	844	877	900	915	931	-	187	-0.139

#### Percentile Bands

<b>95%</b>	1829	2980	2759	2574	2377	2249	2151	2070	2024	1978	1951	1840	1593	926	1.050
<b>90%</b>	1630	2603	2473	2343	2243	2115	1976	1852	1727	1636	1545	1476	1657	853	1.040
<b>80%</b>	1374	2292	2194	2159	2044	1857	1685	1561	1488	1439	1397	1362	1409	800	1.010
<b>75%</b>	1309	2042	1776	1863	1754	1674	1577	1483	1427	1398	1371	1340	1336	772	0.984
<b>60%</b>	1222	1603	1567	1535	1502	1456	1406	1370	1333	1306	1265	1230	1247	681	0.909
<b>50%</b>	1125	1546	1479	1446	1404	1355	1309	1283	1245	1233	1207	1174	1142	664	0.866
<b>40%</b>	1072	1482	1384	1338	1310	1268	1233	1195	1175	1162	1149	1127	1084	640	0.788
<b>25%</b>	995	1397	1294	1260	1213	1179	1137	1108	1081	1074	1053	1022	1012	565	0.757
<b>10%</b>	850	1316	1240	1191	1153	1101	1031	954	878	845	823	806	876	459	0.717

#### Indicative Basis Contract Prices

Date	MPG	17	17.5	18	18.5	19	19.5	20	21	22	23	28
Nov-2018		2380	2300	2250	2180	2130	2100	2065	2060	2030	1960	810
Dec-2018		2380	2300	2250	2180	2130	2100	2065	2060	2030	1960	805
Jan-2019		2360	2280	2230	2160	2110	2080	2055	2050	2020	1950	800
Feb-2019		2360	2280	2230	2160	2110	2080	2055	2050	2020	1950	795
Mar-2019		2350	2270	2220	2150	2100	2070	2055	2050	2020	1950	790
Apr-2019		2350	2270	2220	2150	2100	2070	2055	2050	2020	1950	785
May-2019		2350	2270	2220	2150	2100	2070	2055	2050	2020	1950	780
Jun-2019		2300	2220	2170	2100	2050	2020	2005	2000	1970	1900	775
Jul-2019		2290	2210	2160	2090	2040	2010	1995	1990	1960	1890	770
Aug-2019		2280	2200	2150	2080	2030	2000	1985	1980	1950	1880	765
Sep-2019		2270	2190	2140	2070	2020	1990	1975	1970	1940	1870	760
Oct-2019		2250	2170	2120	2050	2000	1970	1955	1950	1920	1850	755
Nov-2019		2230	2150	2100	2030	1980	1950	1935	1930	1900	1830	750
Dec-2019		2200	2120	2070	2000	1950	1920	1905	1900	1870	1800	745
Jan-2020		2170	2090	2040	1970	1920	1890	1875	1870	1840	1770	740

All prices on this sheet are listed in c/kg clean. Basis Contract prices are **indicative only**. The levels are published to use purely as a guide. For more information regarding forward contracts or to submit a GTC or Target order, contact your local Landmark wool manager, or call Landmark Risk Management on 1800 629 396.

Please use above figures as a guide to submit your GTC or Target orders. Call 1800 629 396.