

# Wool Weekly



Friday, 15 February 2019

## Wool Market Movements

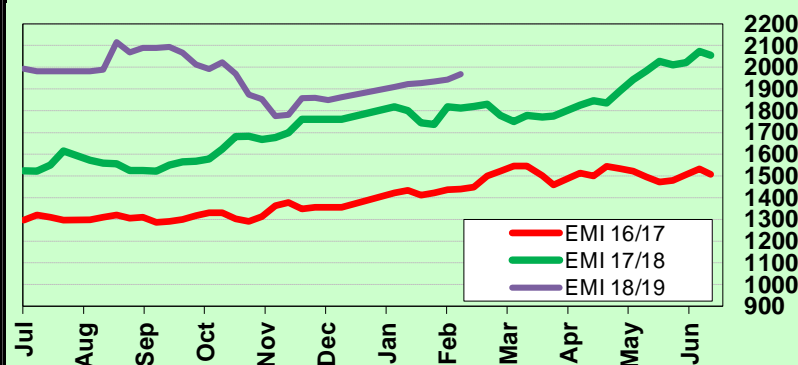
- This week a total of 40,165 bales were offered for sale across the three selling centres with just 5.3% passed in. The EMI gained a further 24 cents to 1,968 c/kg clean, continuing the run of price rises that began in week 27. The smallest offering of Merino fleece lots in a year saw gains in all Micron Price Guides (MPGs) across each of the three selling centres. Crossbred demand remained strong with some record prices achieved. The first day at each centre started cautiously, with prices increasing as the sales progressed.
- A small offering of fine (<18.5 µm) Merino fleece lots in Sydney were characterised by low strength and high midbreaks. These sold at similar levels to the last sale. Buyers were keen to secure lots with best style and paid accordingly. Broader Merino fleece lines also attracted solid buyer support. Merino skirtings were strong as were the crossbreds, particularly the 28 µm micron price guide (MPG) which achieved 1,060 c/kg clean - the highest price since 1983. The oddments market was also strong. The Northern Market Indicator closed at 2,011 c/kg clean up 16 cents and the Northern Merino Carding Indicator gained 24 cents to 1,183 c/kg clean. The Sydney pass-in rate was 6.8%.
- Tasmanian origin wools were a feature of this week's Melbourne sale. The offering on the first day comprised 16 to 19 µm Merino fleece lots with best style and favourable additional measurements. A significant percentage of these lots were 40N/ktex or higher. Despite lesser quantities of these high quality lots available on the second day, price increases occurred across all microns and descriptions. Skirtings, crossbreds and oddments were strong on both sale days. The Southern Regional Indicator rose 28 cents to 1,940 c/kg clean and the Southern Merino Carding Indicator rose 22 cents to 1,136 c/kg clean. The Melbourne pass-in rate was 4.7%.
- Price increases were again a feature of this week's Fremantle sale as the Western market continued the recent trend of gradual week-on-week price rises. Finer lots, 18.0 to 19.5 µm, were plentiful and sold at higher levels than last week. A small quantity of 20 to 21.5 µm lots attracted keen buyer competition, especially those with high strength and low midbreaks. All MPGs recorded gains of between 23 and 48 cents. Skirtings and oddments were higher than the previous week. The Western Market Indicator finished at 2,130 c/kg clean up 29 cents and the Western Merino Carding Indicator was up by 30 cents to 1,155 c/kg clean.

## AWEX WEEKLY WOOL PRICES

Regional Indicator	North	Wkly Chg	South	Wkly Chg	West	Wkly Chg
c/kg clean	2011	+16	1940	+28	2130	+29
MICRON PRICE GUIDES						
16.5	2632	+10	2563n	+39	-	-
17	2587	+9	2520	+32	-	-
17.5	2538	+6	2513	+39	-	-
18	2490	+7	2461	+32	2377n	+30
18.5	2401	+8	2371	+31	2335n	+32
19	2342	+25	2326	+23	2316	+23
19.5	2326	+24	2303	+38	2304	+23
20	2306	+16	2293	+41	2295	+47
21	2270	+10	2281n	+20	2282n	+48
22	-	-	2263n	+30	-	-
23	-	-	-	-	-	-
24	-	-	-	-	-	-
25	-	-	-	-	-	-
26	1368n	+15	1354n	+24	-	-
28	1080n	+35	1103	+50	-	-
30	-	-	928	+40	-	-
32	-	-	519n	+8	-	-
MC	1183	+24	1136n	+22	1155n	+30

## AWEX EMI 2016/17 & 2017/18 Season vs Current

Currently: 1968 c/kg clean



## Upcoming Auction Volumes

	19/02/2019	26/02/2019	5/03/2019
Northern	S34	S35	S36
Sydney	9,516	10,041	8,050
Southern	M34	M35	M36
Melbourne	24,453	16,934	20,485
Western	F34	F35	F36
Fremantle	8,500	8,300	8,250
Total	42,469	35,275	36,785

## THIS WEEK'S SALES STATISTICS

Centre	Bales Originally	Bales Offered	Bales Sold	Pass in Rate
Northern	9,290	7,563	7,047	6.8%
Southern	20,902	23,016	21,923	4.7%
Western	8,050	9,586	9,060	5.5%
TOTAL	38,242	40,165	38,030	5.3%

15 Feb 2019

# Landmark Wool Report

EMI 1968 NMI 2011 SMI 1940 WMI 2130



Average Nth-Sth MPG's as reported on 14 Feb 2019

## AWEX Weekly Eastern Market Indicator Quote Comparisons

Current 1968

Last Quote  
1953 (-15)Last Week  
1944 (-24)Last Month  
1910 (-58)Last Year  
1813 (-155)

## AUD vs USD from 06-Jul-04 to 14-Feb-19



Micron	EMI	16.5	17	17.5	18	18.5	19	19.5	20	21	22	23	25	28	AUD
Current MPG's	1968	2598	2554	2526	2476	2386	2334	2315	2300	2276	2263	-	-	1092	0.712
10 year Average	1217	1799	1696	1633	1569	1503	1436	1377	1326	1294	1264	1223	976	678	0.861
This time last year	1812	2984	2746	2580	2371	2214	2125	2040	1965	1883	1847	1804	1278	795	0.793
10 year High	2116	3187	3007	2831	2683	2569	2462	2414	2382	2354	2350	2308	1828	1092	1.090
10 year Low	721	1259	1152	1092	1021	955	887	802	734	712	702	692	551	424	0.633
% Reported above current	3%	11%	8%	6%	3%	2%	2%	2%	1%	1%	1%	0%	0%	0%	93%
Diff b/w High & Current	148	590	453	306	207	183	128	99	82	79	87	-	-	0	0.378
Diff b/w Ave & Current	751	799	857	892	906	883	898	938	974	981	999	-	-	413	-0.149

## Percentile Bands

95%	1910	2982	2760	2577	2408	2321	2257	2214	2177	2161	2166	2078	1439	940	1.050
90%	1765	2604	2489	2420	2304	2170	2063	1992	1915	1793	1710	1529	1235	876	1.040
80%	1427	2372	2276	2196	2076	1908	1754	1655	1548	1470	1421	1369	1148	811	1.010
75%	1331	2202	2156	2035	1903	1790	1622	1507	1459	1412	1382	1350	1115	785	0.985
60%	1238	1624	1581	1553	1517	1475	1428	1392	1347	1318	1284	1238	1001	690	0.913
50%	1152	1549	1487	1462	1433	1399	1338	1301	1262	1246	1221	1187	931	669	0.870
40%	1089	1485	1390	1349	1318	1291	1259	1225	1194	1180	1162	1135	900	647	0.788
25%	1016	1398	1298	1262	1218	1188	1166	1137	1118	1103	1085	1056	857	586	0.757
10%	868	1315	1240	1191	1154	1104	1042	968	917	893	863	834	687	462	0.719

## Indicative Basis Contract Prices

Date	MPG	17	17.5	18	18.5	19	19.5	20	21	22	23	28	All prices on this sheet are listed in c/kg clean. Basis Contract prices are indicative only. The levels are published to use purely as a guide. For more information regarding forward contracts or to submit a GTC or Target order, contact your local Landmark wool manager, or call Landmark Risk Management on 1800 629 396.
Feb-2019		2470	2390	2340	2320	2270	2240	2245	2240	2210	2140	960	
Mar-2019		2450	2370	2320	2300	2250	2220	2225	2220	2190	2120	950	
Apr-2019		2430	2350	2300	2280	2230	2200	2205	2200	2170	2100	940	
May-2019		2420	2340	2290	2270	2220	2190	2185	2180	2150	2080	940	
Jun-2019		2420	2340	2290	2270	2220	2190	2175	2170	2140	2070	940	
Jul-2019		2400	2320	2270	2250	2200	2170	2165	2160	2130	2060	900	
Aug-2019		2350	2270	2220	2200	2150	2120	2055	2050	2020	1950	890	
Sep-2019		2340	2260	2210	2190	2140	2110	2035	2030	2000	1930	880	
Oct-2019		2330	2250	2200	2180	2130	2100	2015	2010	1980	1910	870	
Nov-2019		2320	2240	2190	2170	2120	2090	1995	1990	1960	1890	860	
Dec-2019		2300	2220	2170	2150	2100	2070	1975	1970	1940	1870	850	
Jan-2020		2290	2210	2160	2140	2090	2060	1955	1950	1920	1850	840	
Feb-2020		2250	2170	2120	2100	2050	2020	1935	1930	1900	1830	830	
Mar-2020		2200	2120	2070	2050	2000	1970	1915	1910	1880	1810	820	
Apr-2020		2150	2070	2020	2000	1950	1920	1895	1890	1860	1790	810	

Please use above figures as a guide to submit your GTC or Target orders. Call 1800 629 396.