

Wool Weekly

LANDMARK

Friday, 5 April 2019

Wool Market Movements

- Lower yielding lots with poorer style again increased in quantity at all three selling centres this week and continue to generate reductions in the Micron Price Guides (MPGs). The limited selection of good and best style wools with high yields continue to attract strong competition. The EMI lost 4 cents this week to 1,943 c/kg clean. The national pass in rate was 12.8%. A slightly larger offering of 38,712 bales is expected next week.
- The Sydney offering was again dominated by average and inferior style wools with lower yields which were discounted on both sale days. Best and good style lots with favourable additional measurements were in low supply and tended to remain unchanged from last week. The Northern Regional Indicator lost 7 cents to 1,986 c/kg clean and the Northern Merino Carding Indicator lost 41 cents to 1,101 c/kg clean. The Sydney pass in rate was 8.8%.
- Falls in all MPGs occurred in Melbourne on Wednesday, before prices for 18.5 µm and finer lots recovered some ground on Thursday. Merino skirtings with < 5% VM were keenly sought by buyers. The Southern Regional Indicator finished at 1,915 c/kg clean down 4 cents, while the Southern Merino Carding Indicator gained 8 cents to 1,117 c/kg clean. The Melbourne pass in rate was 12.4%.
- Wednesday's Fremantle market also saw falls in all MPGs before a recovery on Thursday as buyers fought to secure enough quantity. The limited selection of better style lots in Thursday's offering were in high demand and contributed to the increase in the MPGs. The Western Regional Indicator fell 4 cents to 2,095 c/kg, /kg clean up 3 cents.
- Entries are now open for the **2019 Australian Fleece Competition**. Run jointly by Landmark, AWTA and the Australian Sheep Breeders Association, the competition is part of the Australian Sheep and Wool Show, to held in Bendigo 19-21 July. This is the largest fully measured fleece competition in the world and showcases a range of fleeces, representing every state and a wide range of breeds and microns. The performance class will again allow the benchmarking and display of fleeces shorn at six to eight month intervals. Exhibitors can donate their fleeces to this year's nominated charity, The Cooperative Trials Group for Neuro-Oncology (COGNO). Over \$167,000 has been shared with over 18 national charities since the competition began. The closing date for entries is 7 June 2019. More details are available on www.landmark.com.au

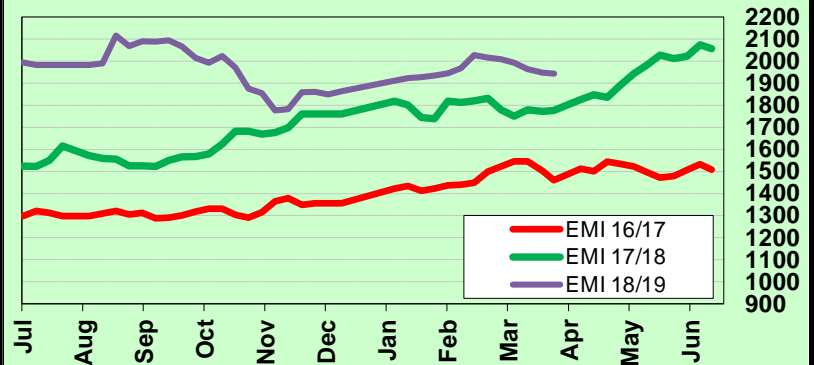
AWEX WEEKLY WOOL PRICES

Regional Indicator	North	Wkly Chg	South	Wkly Chg	West	Wkly Chg
c/kg clean	1986	-7	1915	-4	2095	-4

MICRON PRICE GUIDES						
16.5	2555	-5	2453n	-16	-	-
17	2512	-1	2415n	-32	-	-
17.5	2472	-10	2418	+7	-	-
18	2422	-15	2365	+6	2339n	+3
18.5	2361	-14	2306	+1	2322n	+9
19	2299	-17	2290	-6	2309	+9
19.5	2284	-16	2254	-22	2298	+2
20	2277	-16	2253n	-21	2276	-4
21	2268n	-11	2253n	-10	2270n	0
22	-	-	2251n	-2	-	-
23	-	-	-	-	-	-
24	-	-	-	-	-	-
25	-	-	1628n	+28	-	-
26	1445n	+20	1458n	+25	-	-
28	1205n	-	1203n	+25	-	-
30	-	-	963n	+18	-	-
32	-	-	636n	+8	-	-
MC	1101	-41	1117n	+8	1092n	+3

AWEX EMI 2016/17 & 2017/18 Season vs Current

Currently: 1943 c/kg clean



Upcoming Auction Volumes

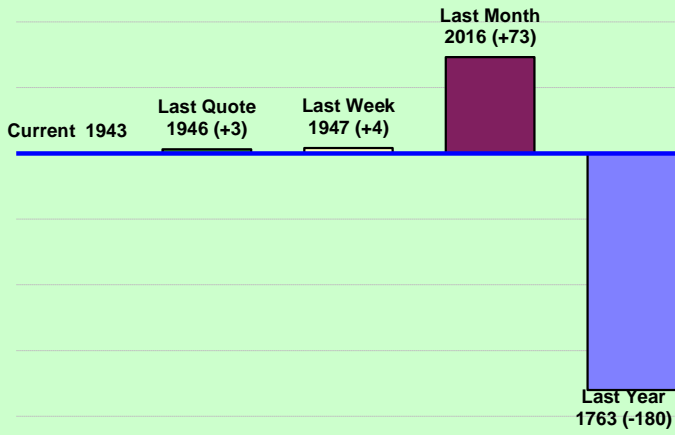
	9/04/2019	16/04/2019	23/04/2019
Northern	S41	S42	S43
Sydney	6,836	11,110	10,960
Southern	M41	M42	M43
Melbourne	20,978	21,695	22,605
Western	F41	F42	F43
Fremantle	10,898	8,250	8,900
Total	38,712	41,055	42,465

THIS WEEK'S SALES STATISTICS

Centre	Bales Originally	Bales Offered	Bales Sold	Pass in Rate
Northern	8,628	9,580	8,734	8.8%
Southern	20,228	20,647	18,085	12.4%
Western	8,330	7,227	5,850	19.1%
TOTAL	37,186	37,454	32,669	12.8%

Average Nth-Sth MPG's as reported on 4 Apr 2019

AWEX Weekly Eastern Market Indicator Quote Comparisons



AUD vs USD from 06-Jul-04 to 04-Apr-19



Micron	EMI	16.5	17	17.5	18	18.5	19	19.5	20	21	22	23	25	28	AUD
Current MPG's	1943	2504	2464	2445	2394	2334	2295	2269	2265	2261	2251	-	1628	1204	0.712
10 year Average	1229	1811	1710	1647	1583	1517	1450	1392	1341	1310	1280	1230	979	686	0.859
This time last year	1772	2985	2748	2522	2300	2144	2036	1981	1926	1887	1858	1802	1325	865	0.770
10 year High	2116	3187	3007	2831	2683	2569	2462	2414	2391	2371	2350	2308	1828	1204	1.090
10 year Low	721	1259	1152	1092	1021	955	887	802	734	712	702	692	551	424	0.633
% Reported above current	5%	18%	14%	11%	7%	6%	5%	5%	4%	3%	3%	0%	3%	0%	92%
Diff b/w High & Current	173	683	543	386	289	235	168	145	126	111	99	-	200	0	0.378
Diff b/w Ave & Current	714	693	754	798	810	816	844	877	924	950	971	-	649	518	-0.147

Percentile Bands

95%	1952	2979	2759	2574	2435	2352	2294	2270	2250	2232	2204	2123	1483	965	1.050
90%	1805	2607	2518	2470	2335	2214	2108	2036	1962	1888	1844	1582	1242	892	1.040
80%	1449	2421	2303	2218	2094	1941	1780	1669	1568	1481	1432	1373	1159	816	1.010
75%	1354	2243	2192	2100	1975	1828	1644	1520	1474	1429	1387	1352	1118	791	0.984
60%	1241	1648	1597	1561	1523	1479	1435	1397	1351	1321	1291	1241	1003	699	0.909
50%	1165	1554	1494	1469	1444	1403	1345	1309	1268	1251	1224	1189	931	671	0.865
40%	1090	1493	1396	1353	1325	1295	1261	1233	1204	1187	1164	1137	900	648	0.785
25%	1017	1399	1299	1266	1221	1191	1168	1138	1123	1110	1086	1058	857	588	0.755
10%	871	1316	1240	1192	1155	1107	1044	968	918	893	865	834	687	462	0.716

Indicative Basis Contract Prices

Date	MPG	17	17.5	18	18.5	19	19.5	20	21	22	23	28
Apr-2019		2335	2330	2300	2290	2270	2260	2255	2250	2220	2150	1000
May-2019		2315	2310	2280	2270	2250	2240	2235	2230	2200	2130	1000
Jun-2019		2285	2280	2250	2240	2220	2210	2205	2200	2170	2100	1000
Jul-2019		2235	2230	2200	2190	2170	2140	2105	2100	2070	2000	900
Aug-2019		2155	2150	2120	2110	2090	2080	2085	2080	2050	1980	890
Sep-2019		2155	2150	2120	2110	2090	2080	2085	2080	2050	1980	880
Oct-2019		2155	2150	2120	2110	2090	2080	2085	2080	2050	1980	870
Nov-2019		2145	2140	2110	2100	2080	2070	2075	2070	2040	1970	860
Dec-2019		2125	2120	2090	2080	2060	2050	2055	2050	2020	1950	850
Jan-2020		2075	2070	2040	2030	2010	2000	2005	2000	1970	1900	840
Feb-2020		2065	2060	2030	2020	2000	1990	1995	1990	1960	1890	830
Mar-2020		2045	2040	2010	2000	1980	1970	1975	1970	1940	1870	820
Apr-2020		2025	2020	1990	1980	1960	1950	1955	1950	1920	1850	810
May-2020		2005	2000	1970	1960	1940	1930	1935	1930	1900	1830	800
Jun-2020		1985	1980	1950	1940	1920	1910	1915	1910	1880	1810	790

All prices on this sheet are listed in c/kg clean. Basis Contract prices are **indicative only**. The levels are published to use purely as a guide. For more information regarding forward contracts or to submit a GTC or Target order, contact your local Landmark wool manager, or call Landmark Risk Management on 1800 629 396.

Please use above figures as a guide to submit your GTC or Target orders. Call 1800 629 396.