

Wool Weekly

LANDMARK

Friday, 3 May 2019

Wool Market Movements

- Australian wool sales resumed after a one-week recess. All three selling centres recorded increases in their regional indicators as well as all Merino micron price guides (MPGs). Crossbred lots continued their upward trend. The EMI gained 17 cents to 1,960 c/kg clean. Buyers actively sought out best and good style lots which drove the upward trend in both the EMI and the regional indicators. Lots with inferior style continued to lose ground. The national pass-in rate was 6.4%. Quantities on offer are expected to decline in coming weeks, with 33,464 bales currently rostered for sale next week.
- Buyers were in a positive mood in Sydney on Wednesday and actively competed for lots across the entire micron range and all descriptions. Sellers were keen to meet the market with a pass-in rate of just 1.1% for the day. Thursday's sale saw further increases in the MPGs. Best and good style lots were in high demand which pushed some MPGs up 10 cents. Merino skirtings performed strongly as did Crossbred lots which gained 65 cents for the week. Oddments were firm. The Northern Regional Indicator rose by 18 cents to 1,997 c/kg clean with the Northern Merino Carding Indicator gaining 10 cents to 1,094 c/kg clean. The Sydney pass-in rate was 3.1%.
- On Wednesday the Melbourne offering comprised a larger quantity of best style lots with favourable additional measurements compared to previous sales. Buyers sought out these lots which pushed all MPGs up by 20 cents. Drought affected wools with poorer style and inferior measurements maintained pre-recess levels. On Thursday, premiums were paid for stylish well measured lots, while lower quality lots were discounted. Mixed results for Merino skirtings as buyers sought to secure stylish lots with low VM (up 10 - 15 cents) with lesser quality lots unchanged or discounted. Crossbred lots continued their solid performance recording gains across all microns while oddments remained firm. The Southern Regional Indicator closed the week up 18 cents to 1,939 c/kg clean with the Southern Merino Carding indicator rising 10 cents to 1,082c/kg clean. The Melbourne pass-in rate 5.5%.
- The Fremantle market performed strongly this week with buyers actively pursuing finer Merino lots with good style. Finer micron lots (<19.5 µm) gained between 26 and 35 cents. Inferior types could not capture buyer interest and lost ground, with many of these lots passed in. Merino skirtings trended dearer as did oddment lots. The Western Regional Indicator lifted by 28 cents to 2,093 c/kg clean with the Western Merino Carding indicator closing at 1,119 c/kg clean up 25 cents. The Fremantle pass-in rate was 11.5%.

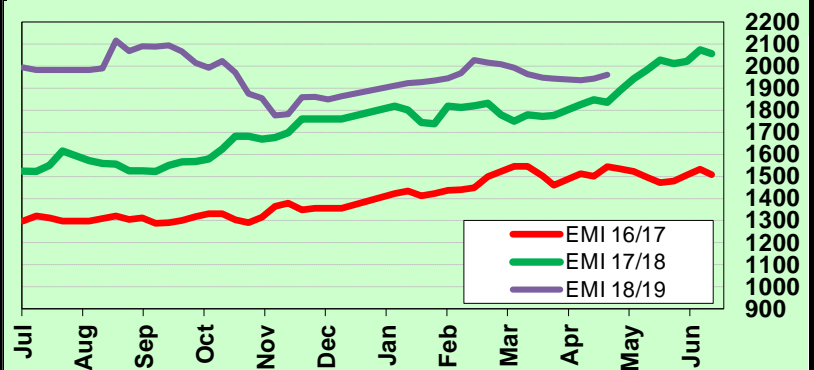
AWEX WEEKLY WOOL PRICES

Regional Indicator	North	Wkly Chg	South	Wkly Chg	West	Wkly Chg
c/kg clean	1997	+18	1939	+18	2093	+28

MICRON PRICE GUIDES						
16.5	2532	+5	2420n	+12	-	-
17	2493	+10	2390	+32	-	-
17.5	2463	+16	2385	+30	-	-
18	2425	+21	2375	+20	2333n	+32
18.5	2370	+8	2325	+30	2315	+26
19	2304	+13	2306	+15	2304	+33
19.5	2293	+14	2291	+24	2293	+35
20	2278	+14	2271	+16	2264	+18
21	2265n	-	2260	+22	2249	+19
22	-	-	2240n	+20	-	-
23	-	-	-	-	-	-
24	-	-	-	-	-	-
25	-	-	-	-	-	-
26	1515n	+65	1511n	+10	-	-
28	1303n	+59	1308	+42	-	-
30	-	-	1005n	+29	-	-
32	-	-	659n	0	-	-
MC	1094	+10	1082n	+10	1119n	+25

AWEX EMI 2016/17 & 2017/18 Season vs Current

Currently: 1960 c/kg clean



Upcoming Auction Volumes

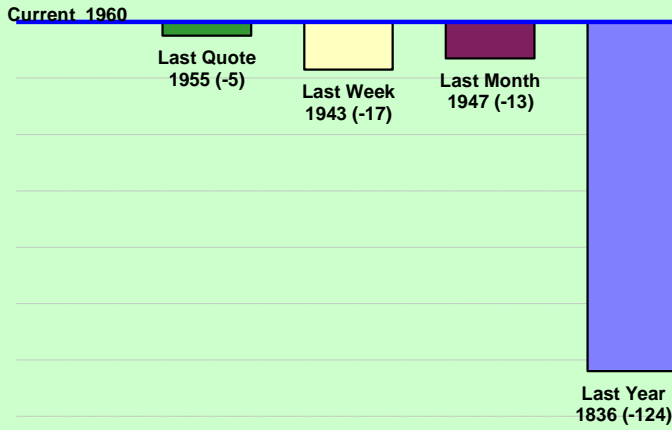
	7/05/2019	14/05/2019	21/05/2019
Northern	S45	S46	S47
Sydney	8,159	9,010	7,840
Southern	M45	M46	M47
Melbourne	19,248	17,635	15,279
Western	F45	F46	F47
Fremantle	6,057	7,900	7,600
Total	33,464	34,545	30,719

THIS WEEK'S SALES STATISTICS

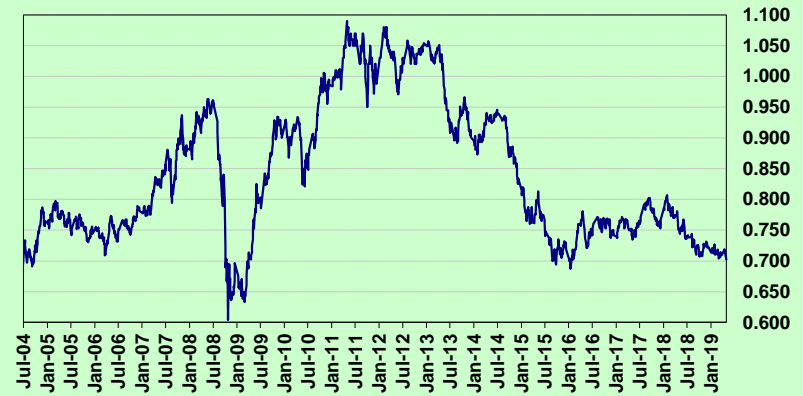
Centre	Bales Originally	Bales Offered	Bales Sold	Pass in Rate
Northern	9,665	10,443	10,120	3.1%
Southern	22,753	21,790	20,592	5.5%
Western	8,750	10,820	9,578	11.5%
TOTAL	41,168	43,053	40,290	6.4%

Average Nth-Sth MPG's as reported on 2 May 2019

AWEX Weekly Eastern Market Indicator Quote Comparisons



AUD vs USD from 06-Jul-04 to 02-May-19



Micron	EMI	16.5	17	17.5	18	18.5	19	19.5	20	21	22	23	25	28	AUD
Current MPG's	1960	2476	2442	2424	2400	2348	2305	2292	2275	2263	2240	-	-	1306	0.702
10 year Average	1233	1815	1714	1651	1588	1522	1455	1397	1347	1316	1285	1231	981	689	0.858
This time last year	1836	3007	2732	2527	2346	2180	2086	2018	1985	1967	1951	1931	1531	994	0.752
10 year High	2116	3187	3007	2831	2683	2569	2462	2414	2391	2371	2350	2308	1828	1306	1.090
10 year Low	721	1259	1152	1092	1021	955	887	802	734	712	702	692	551	424	0.633
% Reported above current	5%	19%	15%	11%	7%	5%	4%	3%	3%	3%	3%	0%	0%	0%	95%
Diff b/w High & Current	156	711	565	407	283	221	157	122	117	109	110	-	-	0	0.388
Diff b/w Ave & Current	727	661	728	773	812	826	850	895	928	947	955	-	-	617	-0.156

Percentile Bands

95%	1956	2979	2759	2574	2434	2351	2295	2273	2257	2237	2218	2126	1501	973	1.050
90%	1815	2606	2517	2466	2351	2222	2122	2050	1983	1904	1853	1589	1248	894	1.040
80%	1472	2458	2314	2222	2102	1952	1795	1677	1581	1486	1435	1373	1161	820	1.010
75%	1359	2257	2198	2128	1997	1837	1650	1527	1479	1432	1388	1352	1119	796	0.981
60%	1242	1653	1606	1562	1524	1481	1438	1398	1355	1323	1292	1241	1003	702	0.909
50%	1166	1555	1496	1472	1446	1407	1348	1315	1270	1254	1225	1189	931	671	0.862
40%	1092	1496	1398	1355	1327	1296	1264	1234	1207	1188	1165	1137	900	649	0.783
25%	1018	1399	1302	1266	1221	1192	1168	1140	1125	1112	1087	1058	857	589	0.754
10%	872	1316	1241	1192	1155	1107	1044	968	918	894	865	834	687	462	0.716

Indicative Basis Contract Prices

Date	MPG	17	17.5	18	18.5	19	19.5	20	21	22	23	28
May-2019		2335	2330	2300	2290	2270	2260	2255	2250	2220	2150	1120
Jun-2019		2315	2310	2280	2270	2250	2240	2255	2250	2220	2150	1200
Jul-2019		2285	2280	2250	2240	2220	2210	2255	2250	2220	2150	1100
Aug-2019		2235	2230	2200	2190	2170	2140	2105	2100	2070	2000	1100
Sep-2019		2225	2220	2190	2180	2160	2150	2085	2080	2050	1980	1100
Oct-2019		2225	2220	2190	2180	2160	2150	2055	2050	2020	1950	1040
Nov-2019		2225	2220	2190	2180	2160	2150	2025	2020	1990	1920	1040
Dec-2019		2225	2220	2190	2180	2160	2150	2025	2020	1990	1920	1040
Jan-2020		2225	2220	2190	2180	2160	2150	2025	2020	1990	1920	980
Feb-2020		2075	2070	2040	2030	2010	2007	2005	2000	1970	1900	960
Mar-2020		2065	2060	2030	2020	2000	1997	1995	1990	1960	1890	940
Apr-2020		2045	2040	2010	2000	1980	1977	1975	1970	1940	1870	920
May-2020		2025	2020	1990	1980	1960	1957	1955	1950	1920	1850	900
Jun-2020		2005	2000	1970	1960	1940	1937	1935	1930	1900	1830	880
Jul-2020		1985	1980	1950	1940	1920	1917	1915	1910	1880	1810	860

All prices on this sheet are listed in c/kg clean. Basis Contract prices are **indicative only**. The levels are published to use purely as a guide. For more information regarding forward contracts or to submit a GTC or Target order, contact your local Landmark wool manager, or call Landmark Risk Management on 1800 629 396.

Please use above figures as a guide to submit your GTC or Target orders. Call 1800 629 396.