

# Wool Weekly

# LANDMARK

Friday, 17 May 2019

## Wool Market Movements

- This week saw large price reductions across all Micron Price Guides (MPGs) in all three centres. Growers were reluctant to sell at these lower prices and the national pass-in rate dimbed to 21.6%. The limited number of crossbred lots could not sustain the gains of previous weeks with losses of up to 143 cents. Quantities reduce again next week, with 25,637 bales currently rostered for sale.
- Price falls across all MPGs occurred on both Sydney sale days. The Northern Regional Indicator lost 22 cents on Wednesday and a further 30 cents on Thursday to end the week at 1,937 c/kg clean. The Northern selection was again dominated by inferior style lots, style 5 or worse. Merino skirting and crossbred lots also lost ground this week while oddments were mixed. The Sydney pass-in rate was 16.4%
- Good, average and inferior style lots comprised nearly 80% of the Melbourne offering. The small quantity of best style lots with favourable additional measurements experienced smaller losses. while a high pass-in rate of 21.2% reduced further losses on Thursday. Merino skirtings fell across all microns and descriptions, with lots carrying higher VM (> 5%) falling by up to 40 cents. Finer crossbred lots, 26 & 28 µm, lost between 110 and 143 cents. Oddments also lost ground. The Southern Regional Indicator lost 63 cents to 1,864 c/kg clean.
- More than 40% of the 6,402 bales on offer in Fremantle this week were passed in. Price reductions of between 46 and 64 cents across all MPGs occurred on Wednesday, with further falls of between 5 and 21 cents on Thursday. The small quantity of lots sold in WA has meant that all quotes were published on a nominal basis. The Western Regional Indicator closed the week at 1,995 c/kg clean, down 67 cents.

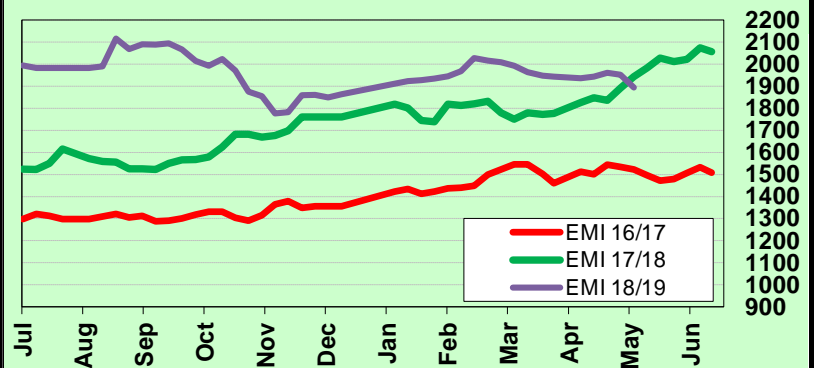
## AWEX WEEKLY WOOL PRICES

Regional Indicator	North	Wkly Chg	South	Wkly Chg	West	Wkly Chg
c/kg clean	1937	-52	1864	-63	1995	-67

MICRON PRICE GUIDES						
16.5	2453	-64	2316n	-82	-	-
17	2418	-62	2302	-62	-	-
17.5	2400	-48	2301	-60	-	-
18	2365	-48	2299	-48	2215n	-85
18.5	2306	-48	2236	-56	2208n	-71
19	2231	-57	2218	-61	2186n	-78
19.5	2200	-73	2184	-66	2177n	-74
20	2189n	-70	2189	-58	2171n	-63
21	-	-	2200	-46	2157n	-52
22	-	-	2177n	-58	-	-
23	-	-	-	-	-	-
24	-	-	-	-	-	-
25	-	-	-	-	-	-
26	1455n	-	1413n	-110	-	-
28	-	-	1180	-143	-	-
30	-	-	981	-24	-	-
32	-	-	626n	-33	-	-
MC	1056	-37	1039n	-50	1048n	-46

AWEX EMI 2016/ 17 & 2017/ 18 Season vs Current  
Currently: 1893 c/kg clean



2019 MerinoLink Annual  
**Conference & Field Day**  
June 19th & 20th  
Armidale, NSW

To book tickets: [www.trybooking.com/BBKKG](http://www.trybooking.com/BBKKG)

Enquiries: [www.merinolink.com.au](http://www.merinolink.com.au)  
[conference@merinolink.com.au](mailto:conference@merinolink.com.au)

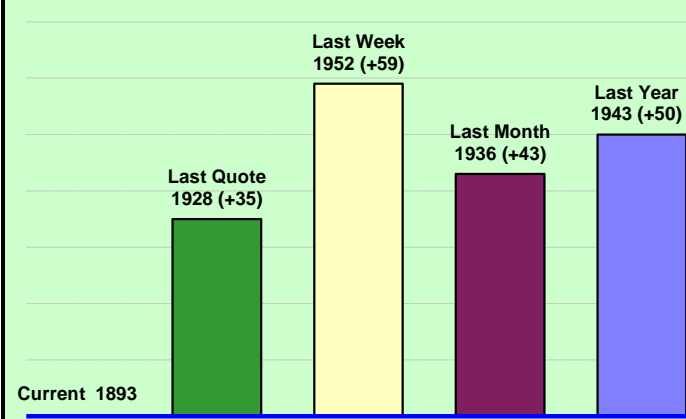
## THIS WEEK'S SALES STATISTICS

Centre	Bales Originally	Bales Offered	Bales Sold	Pass in Rate
Northern	9,010	8,431	7,052	16.4%
Southern	17,635	18,302	15,097	17.5%
Western	7,900	6,402	3,816	40.4%
<b>TOTAL</b>	<b>34,545</b>	<b>33,135</b>	<b>25,965</b>	<b>21.6%</b>

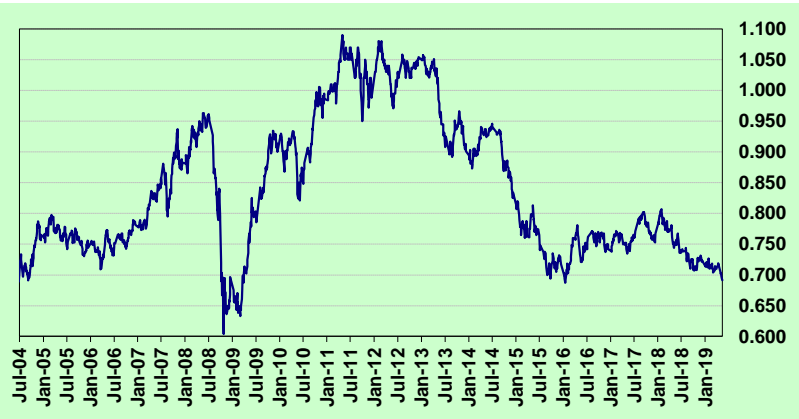
## Upcoming Auction Volumes

	21/05/2019	28/05/2019	4/06/2019
Northern	S47	S48	S49
Sydney	7,100	8,160	7,530
Southern	M47	M48	M49
Melbourne	14,032	18,250	14,398
Western	F47	F48	F49
Fremantle	4,505	6,950	RECESS
<b>Total</b>	<b>25,637</b>	<b>33,360</b>	<b>21,928</b>

### AWEX Weekly Eastern Market Indicator Quote Comparisons



### AUD vs USD from 06-Jul-04 to 16-May-19



Micron	EMI	16.5	17	17.5	18	18.5	19	19.5	20	21	22	23	25	28	AUD
<b>Current MPG's</b>	1893	2385	2360	2351	2332	2271	2225	2192	2189	2200	2177	-	-	1180	0.692
<b>10 year Average</b>	1235	1817	1716	1654	1591	1525	1458	1400	1350	1319	1288	1231	981	691	0.857
<b>This time last year</b>	1943	3005	2793	2622	2432	2293	2210	2173	2149	2133	2115	2092	1574	1008	0.753
<b>10 year High</b>	2116	3187	3007	2831	2683	2569	2462	2414	2391	2371	2350	2308	1828	1323	1.090
<b>10 year Low</b>	721	1259	1152	1092	1021	955	887	802	734	712	702	692	551	424	0.633
<b>% Reported above current</b>	8%	21%	19%	14%	11%	8%	8%	8%	7%	7%	7%	0%	0%	1%	97%
<b>Diff b/w High &amp; Current</b>	223	803	647	481	351	298	238	222	202	171	173	-	-	143	0.398
<b>Diff b/w Ave &amp; Current</b>	658	568	644	697	741	746	766	792	839	881	889	-	-	489	-0.166

#### Percentile Bands

<b>95%</b>	1957	2978	2758	2573	2433	2351	2296	2274	2259	2238	2219	2126	1501	976	1.050
<b>90%</b>	1818	2606	2516	2464	2355	2226	2130	2055	1992	1937	1869	1589	1248	899	1.040
<b>80%</b>	1482	2458	2326	2225	2108	1963	1797	1681	1584	1493	1440	1373	1161	822	1.007
<b>75%</b>	1362	2273	2205	2142	2001	1846	1658	1540	1481	1436	1389	1352	1119	797	0.980
<b>60%</b>	1243	1658	1607	1563	1527	1483	1442	1399	1356	1325	1292	1241	1003	705	0.909
<b>50%</b>	1168	1556	1496	1474	1449	1411	1353	1318	1272	1255	1228	1189	931	671	0.860
<b>40%</b>	1092	1496	1399	1356	1329	1298	1265	1235	1207	1188	1170	1137	900	649	0.782
<b>25%</b>	1019	1399	1304	1267	1221	1193	1168	1141	1126	1112	1087	1058	857	590	0.754
<b>10%</b>	872	1316	1241	1192	1155	1107	1044	968	918	894	865	834	687	462	0.715

#### Indicative Basis Contract Prices

Date	MPG	17	17.5	18	18.5	19	19.5	20	21	22	23	28
May-2019		2215	2210	2180	2170	2150	2140	2135	2130	2100	2030	1100
Jun-2019		2205	2200	2170	2160	2140	2130	2125	2120	2090	2020	1080
Jul-2019		2195	2190	2160	2150	2130	2120	2115	2110	2080	2010	1050
Aug-2019		2195	2190	2160	2150	2130	2120	2115	2110	2080	2010	1030
Sep-2019		2185	2180	2150	2140	2120	2110	2085	2080	2050	1980	1010
Oct-2019		2165	2160	2130	2120	2100	2090	2055	2050	2020	1950	1000
Nov-2019		2135	2130	2100	2090	2070	2060	2025	2020	1990	1920	995
Dec-2019		2095	2090	2060	2050	2030	2020	2005	2000	1970	1900	990
Jan-2020		2065	2060	2030	2020	2000	1990	1995	1990	1960	1890	980
Feb-2020		2055	2050	2020	2010	1990	2007	1985	1980	1950	1880	980
Mar-2020		2045	2040	2010	2000	1980	1997	1975	1970	1940	1870	980
Apr-2020		2025	2020	1990	1980	1960	1977	1955	1950	1920	1850	980
May-2020		2005	2000	1970	1960	1940	1957	1935	1930	1900	1830	960
Jun-2020		1985	1980	1950	1940	1920	1937	1915	1910	1880	1810	940
Jul-2020		1965	1960	1930	1920	1900	1917	1895	1890	1860	1790	920

All prices on this sheet are listed in c/kg clean. Basis Contract prices are **indicative only**. The levels are published to use purely as a guide. For more information regarding forward contracts or to submit a GTC or Target order, contact your local Landmark wool manager, or call Landmark Risk Management on 1800 629 396.

Please use above figures as a guide to submit your GTC or Target orders. Call 1800 629 396.