

# Wool Weekly

# LANDMARK

Friday, 24 May 2019

## Wool Market Movements

- The EMI fell by 60 cents this week to 1,833 /kg clean. Buyer sentiment was cautious as they sought to gauge the market. Prices opened lower on Wednesday and decreased during the day. However there were positive signs on Thursday with smaller price reductions. The national pass-in rate was 28.2%. 31,562 bales are rostered for sale next week. Fremantle will again have a one-day sale due to low quantities.
- Good (66% of the offering), average & inferior (25%) lots dominated Sydney's Wednesday offering and contributed to the 37.7% pass-in rate. Soft demand saw falls of up to 57 cents across all Micron Price Guides (MPGs). The low number of best style lots (9%) eased by 10 to 20 cents. Thursday saw further losses of up to 13 cents, while a larger number of best style lots (17%) achieved similar prices to Wednesday. Merino skirtings, Crossbreds and Oddments followed a similar pattern on both days. The Northern Regional Indicator lost 68 cents to 1,869 c/kg clean and the Northern Merino Carding Indicator lost 37 cents to 1,019 c/kg clean. The Sydney pass-in rate was 26.6%.
- This week's Melbourne sales followed Sydney's pattern. Wednesday saw just 6,700 bales on offer comprising mostly good, average and inferior style. Buyers were very selective, prices fell by up to 55 cents and 28.6% of lots were passed in. A larger number of best style lots on Thursday limited further price losses to between 4 and 17 cents. Merino skirtings and Crossbred lots followed a similar pattern, although oddments experienced smaller falls. The Southern Regional Indicator lost 54 cents for the week to 1,810 c/kg clean with the Southern Merino Carding Indicator finishing at a similar level to last week, losing just 3 cents to 1,036 c/kg clean. The Melbourne pass-in rate was 22.1%.
- Due to just 4,388 bales on offer in Fremantle this week, the Western region sale was reduced to a one-day sale. Large losses, between 53 and 81 cents, occurred across all MPGs. Growers were not prepared to sell at this market level with 48.7% of lots on offer passed in. This was in addition to 10% of lots withdrawn prior to the sale. More than 44% of the Merino skirting lots were passed in with those sold between 75 to 90 cents easier. The Western Regional Indicator closed at 1,937 c/kg clean down 58 cents and the Western Merino Carding Indicator lost 41 cents to 1,007 c/kg clean.

**A reminder that all entries for the 2019 Australian Fleece Competition must be received at the Brooklyn Wool Store by Friday 7th June.**

See [www.landmark.com.au](http://www.landmark.com.au) for more details.

## AWEX WEEKLY WOOL PRICES

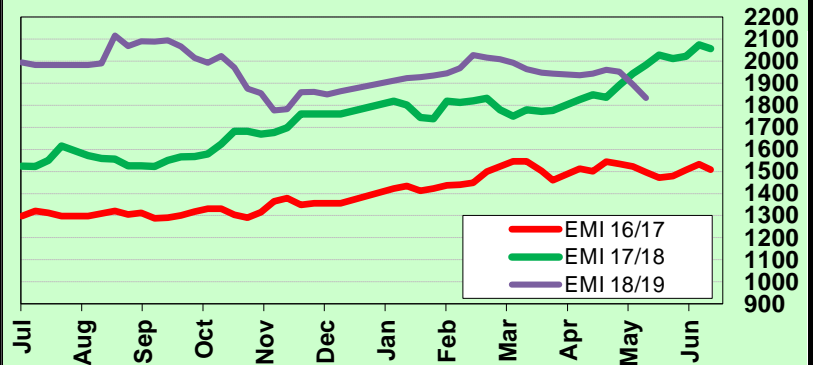
Regional Indicator	North	Wkly Chg	South	Wkly Chg	West	Wkly Chg
c/kg clean	1869	-68	1810	-54	1937	-58

MICRON PRICE GUIDES						
16.5	2407	-46	2261n	-55	-	-
17	2380	-38	2248	-54	-	-
17.5	2356	-44	2247	-54	-	-
18	2317	-48	2240	-59	2134	-81
18.5	2244	-62	2169	-67	2129	-79
19	2163	-68	2146	-72	2121	-65
19.5	2155	-45	2144	-40	2116	-61
20	2149n	-40	2144	-45	2116	-55
21	2129n	-	2137	-63	2104	-53
22	-	-	2131n	-46	-	-
23	-	-	2007n	-	-	-
24	-	-	-	-	-	-
25	-	-	-	-	-	-
26	-	-	-	-	-	-
28	-	-	1071	-109	-	-
30	-	-	888n	-93	-	-
32	-	-	573n	-53	-	-
MC	1019	-37	1036n	-3	1007	-41

## AWEX EMI 2016/17 & 2017/18 Season vs Current

Currently: 1833 c/kg clean



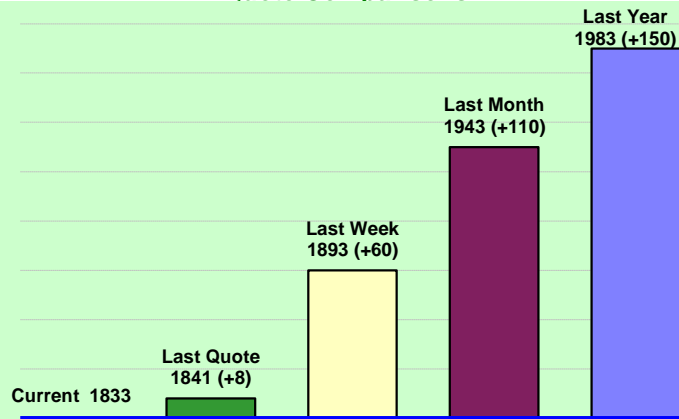
## Upcoming Auction Volumes

	28/05/2019	4/06/2019	11/06/2019
Northern	S48	S49	S50
Sydney	8,984	7,530	8,330
Southern	M48	M49	M50
Melbourne	17,696	14,398	16,350
Western	F48	F49	F50
Fremantle	4,784	RECESS	7,000
<b>Total</b>	<b>31,464</b>	<b>21,928</b>	<b>31,680</b>

## THIS WEEK'S SALES STATISTICS

Centre	Bales Originally	Bales Offered	Bales Sold	Pass in Rate
Northern	7,840	6,900	5,066	26.6%
Southern	15,279	12,833	9,992	22.1%
Western	7,600	4,388	2,250	48.7%
<b>TOTAL</b>	<b>30,719</b>	<b>24,121</b>	<b>17,308</b>	<b>28.2%</b>

### AWEX Weekly Eastern Market Indicator Quote Comparisons



### AUD vs USD from 06-Jul-04 to 23-May-19



Micron	EMI	16.5	17	17.5	18	18.5	19	19.5	20	21	22	23	25	28	AUD
<b>Current MPG's</b>	1833	2334	2314	2302	2279	2207	2155	2150	2147	2133	2131	2007	-	1071	0.688
<b>10 year Average</b>	1237	1818	1717	1655	1592	1526	1459	1401	1351	1320	1290	1232	981	692	0.857
<b>This time last year</b>	1983	3066	2861	2696	2498	2344	2271	2233	2198	2188	2180	2137	1669	997	0.757
<b>10 year High</b>	2116	3187	3007	2831	2683	2569	2462	2414	2391	2371	2350	2308	1828	1323	1.090
<b>10 year Low</b>	721	1259	1152	1092	1021	955	887	802	734	712	702	692	551	424	0.633
<b>% Reported above current</b>	9%	23%	20%	16%	13%	11%	9%	9%	9%	8%	8%	6%	0%	3%	97%
<b>Diff b/w High &amp; Current</b>	283	853	693	530	404	362	308	264	245	238	219	301	-	252	0.402
<b>Diff b/w Ave &amp; Current</b>	596	516	597	646	687	680	695	748	795	813	841	775	-	379	-0.169

#### Percentile Bands

<b>95%</b>	1957	2978	2758	2573	2433	2351	2295	2274	2259	2238	2219	2126	1501	993	1.050
<b>90%</b>	1820	2606	2516	2463	2354	2226	2139	2056	1994	1939	1896	1600	1248	908	1.040
<b>80%</b>	1489	2458	2326	2227	2108	1964	1804	1685	1588	1493	1440	1373	1161	822	1.006
<b>75%</b>	1364	2273	2209	2148	2013	1848	1663	1542	1482	1437	1389	1353	1119	798	0.980
<b>60%</b>	1243	1661	1607	1564	1528	1483	1444	1400	1357	1325	1294	1241	1003	705	0.909
<b>50%</b>	1168	1556	1496	1476	1450	1412	1356	1319	1272	1255	1230	1189	931	671	0.860
<b>40%</b>	1092	1497	1400	1358	1330	1299	1266	1236	1208	1190	1170	1137	900	649	0.782
<b>25%</b>	1019	1399	1304	1267	1222	1193	1169	1141	1126	1112	1087	1058	857	590	0.754
<b>10%</b>	872	1316	1241	1193	1156	1107	1044	969	919	894	865	834	687	462	0.715

#### Indicative Basis Contract Prices

Date	MPG	17	17.5	18	18.5	19	19.5	20	21	22	23	28
Jun-2019		2185	2180	2150	2140	2120	2110	2075	2070	2040	1970	1000
Jul-2019		2145	2140	2110	2100	2080	2070	1985	1980	1950	1880	980
Aug-2019		2125	2120	2090	2080	2060	2050	1965	1960	1930	1860	960
Sep-2019		2115	2110	2080	2070	2050	2040	1955	1950	1920	1850	940
Oct-2019		2105	2100	2070	2060	2040	2030	1955	1950	1920	1850	920
Nov-2019		2065	2060	2030	2020	2000	1990	1955	1950	1920	1850	900
Dec-2019		2035	2030	2000	1990	1970	1960	1945	1940	1910	1840	880
Jan-2020		1985	1980	1950	1940	1920	1910	1905	1900	1870	1800	860
Feb-2020		1965	1960	1930	1920	1900	1890	1895	1890	1860	1790	840
Mar-2020		1955	1950	1920	1910	1890	2007	1885	1880	1850	1780	820
Apr-2020		1945	1940	1910	1900	1880	1997	1875	1870	1840	1770	800
May-2020		1925	1920	1890	1880	1860	1977	1855	1850	1820	1750	780
Jun-2020		1905	1900	1870	1860	1840	1957	1835	1830	1800	1730	760
Jul-2020		1885	1880	1850	1840	1820	1937	1815	1810	1780	1710	740
Aug-2020		1865	1860	1830	1820	1800	1917	1795	1790	1760	1690	720

All prices on this sheet are listed in c/kg clean. Basis Contract prices are **indicative only**. The levels are published to use purely as a guide. For more information regarding forward contracts or to submit a GTC or Target order, contact your local Landmark wool manager, or call Landmark Risk Management on 1800 629 396.

Please use above figures as a guide to submit your GTC or Target orders. Call 1800 629 396.