

Wool Weekly

LANDMARK

Friday, 13 December 2019

WOOL MARKET MOVEMENTS

- The looming Christmas recess drove demand as buyers sought to secure sufficient quantity. All three centres opened strongly, with gains posted in all MPGs in all regions - except the 18.5 µm in Melbourne which fell 19 cents. The EMI rose 11 cents to close at 1,503 c/kg clean. The national pass-in rate was 10.7%. Sales are on Tuesday and Wednesday next week in all centres with 39,430 bales currently on offer.
- Consistent demand in Sydney saw price increases (2 - 15 cents) across all Merino MPGs on day 1. The positive tone continued on day 2 with further gains in all MPGs (2 - 11 cents). Broader lots (> 19 µm) were at the top end of the price gains. All types and descriptions of Merino skirtings rose 10 to 20 cents on day 1, before losing these gains on day 2. Finer crossbred lots (≤ 26 µm) lost some ground on day 1, while broader lots gained 10 cents, before the crossbred market softened on day 2 (down 5 - 10 cents). Soft demand for oddments saw all categories ease. The Northern Regional Indicator gained 3 cents to 1,527 c/kg clean while the Northern Merino Carding Indicator dropped 21 cents to 1,040 c/kg clean. The Sydney pass-in rate was 8%.
- A 3-day sale in Melbourne this week with strong competition for stylish lots with favourable additional measurements on day 1 setting the tone. Day 2 consolidated these gains, with buyers continuing to seek well measured best style lots. High quantities of poorer style lots with low strength between 18.5 to 19.5 µm on day 3 pushed these MPGs into negative territory, while other MPGs continued to rise with finer lots (<18 µm) gaining the most ground. Merino skirtings were robust, starting soundly and maintaining value on day 1, gaining 10 cents on day 2 before regaining early losses on day 3. Well prepared crossbred lots attracted spirited bidding and gained ground. The oddment market eased as the week progressed. The Southern Regional Indicator rose 17 cents to 1,488 c/kg clean but the Southern Merino Carding Indicator fell 19 cents to 1,058 c/kg clean. The Melbourne pass-in rate was 10.8%.
- Buyers competed strongly in Fremantle with all Merino MPGs rising, gaining between 15 and 22 cents on day 1 before posting mixed results on day 2 when most MPGs maintained their value, the 18.5 µm lost 4 cents and the 19 µm rose 5 cents. Low VM (< 3%) fine Merino skirtings gained up to 20 cents on day 1, before the skirtings market weakened on day 2 and generally reversed the previous day's gains. Oddments were mixed. on day 1 and all categories eased on day 2. The Western Regional Indicator rose 10 cents to 1,614 c/kg clean, however the Western Merino Carding Indicator lost 16 cents to 1,078 c/kg clean. The Fremantle pass-in rate was 13.5%.

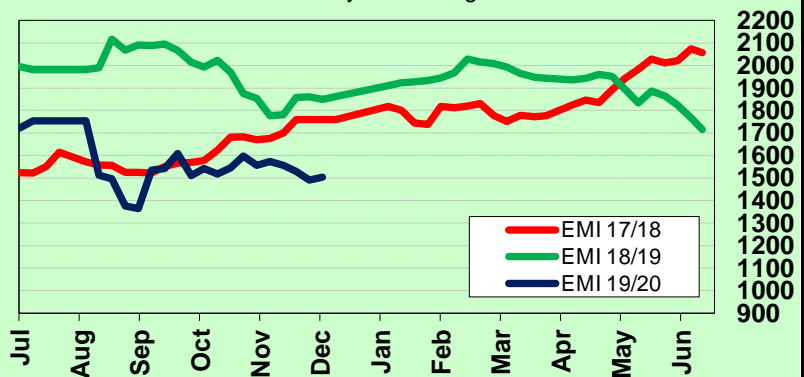
AWEX WEEKLY WOOL PRICES

Regional Indicator	North	Wkly Chg	South	Wkly Chg	West	Wkly Chg
c/kg clean	1527	+3	1488	+17	1614	+10

MICRON PRICE GUIDES						
16.5	1997	+10	2009n	+31	-	-
17	1925	+17	1950	+36	-	-
17.5	1865	+12	1882	+21	-	-
18	1815	+7	1815	+17	1772n	+18
18.5	1763	+16	1739	-19	1749n	+11
19	1723	+17	1727	+15	1724	+26
19.5	1709	+20	1712	+18	1706	+18
20	1708	+25	1711	+37	1703	+22
21	1705n	+24	1709	+38	1702n	+19
22	-	-	1709n	+45	-	-
23	-	-	-	-	-	-
24	-	-	-	-	-	-
25	-	-	-	-	-	-
26	1120n	-15	1149	+16	-	-
28	840n	+7	854	+19	-	-
30	-	-	671	+23	-	-
32	-	-	453n	+18	-	-
MC	1040n	-21	1058	-19	1078n	-16

AWEX EMI 2017/18 & 2018/19 Seasons vs Current

Currently: 1503 c/kg clean



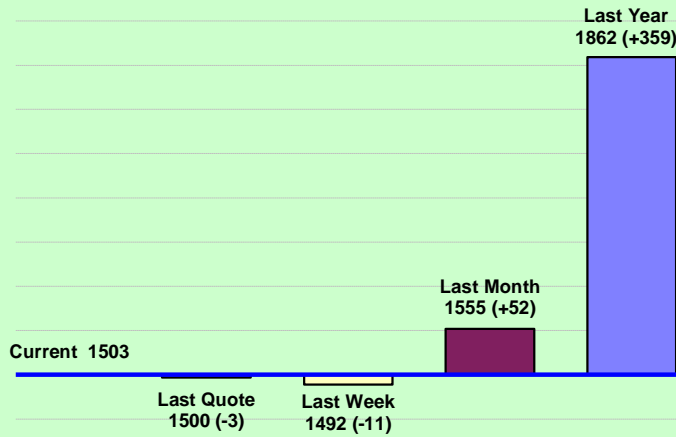
UPCOMING AUCTION VOLUMES

	17/12/2019	24/12/2019	31/12/2019
Northern	S25	S26	S27
Sydney	10,400	RECESS	RECESS
Southern	M25	M26	M27
Melbourne	20,468	RECESS	RECESS
Western	F25	F26	F27
Fremantle	8,562	RECESS	RECESS
Total	39,430	RECESS	RECESS

THIS WEEK'S SALES STATISTICS

Centre	Bales Originally	Bales Offered	Bales Sold	Pass in Rate
Northern	10,220	9,777	8,999	8.0%
Southern	20,270	24,112	21,502	10.8%
Western	7,450	8,653	7,484	13.5%
TOTAL	37,940	42,542	37,985	10.7%

AWEX Weekly Eastern Market Indicator Quote Comparisons



AUD vs USD from 06-Jul-04 to 12-Dec-19



Micron	EMI	16.5	17	17.5	18	18.5	19	19.5	20	21	22	23	25	28	AUD
Current MPG's	1503	2003	1938	1874	1815	1751	1725	1711	1710	1707	1709	-	-	847	0.689
10 year Average	1293	1866	1771	1712	1651	1586	1521	1467	1421	1390	1351	1280	1144	724	0.862
This time last year	1862	2564	2516	2454	2387	2318	2248	2203	2182	2151	2155	2121	1388	859	0.723
10 year High	2116	3187	3007	2831	2683	2569	2462	2414	2391	2371	2350	2308	2153	1323	1.090
10 year Low	847	1265	1172	1150	1118	1072	1015	945	894	870	835	808	760	650	0.670
% Reported above current	24%	33%	33%	34%	34%	33%	28%	24%	19%	17%	15%	0%	0%	20%	96%
Diff b/w High & Current	613	1184	1069	958	868	818	737	703	682	664	641	-	-	476	0.402
Diff b/w Ave & Current	210	137	166	162	164	165	204	243	288	317	358	-	-	123	-0.174

Percentile Bands

95%	1960	2983	2760	2578	2438	2353	2299	2276	2260	2240	2223	2153	1507	1026	1.050
90%	1835	2613	2523	2474	2361	2244	2157	2088	2072	2067	2055	1697	1264	942	1.040
80%	1544	2463	2348	2243	2138	2011	1869	1764	1678	1595	1486	1395	1176	848	1.010
75%	1495	2317	2234	2172	2072	1893	1777	1691	1596	1500	1432	1360	1139	827	0.985
60%	1285	1880	1706	1638	1586	1529	1499	1451	1393	1368	1322	1272	1025	752	0.913
50%	1225	1590	1562	1535	1505	1461	1411	1374	1337	1308	1262	1214	947	683	0.864
40%	1129	1532	1464	1434	1402	1363	1317	1288	1250	1235	1207	1163	915	665	0.778
25%	1050	1433	1339	1303	1274	1248	1209	1178	1161	1151	1131	1105	884	626	0.750
10%	937	1341	1260	1222	1182	1146	1103	1067	1002	982	945	915	716	482	0.712

Indicative Basis Contract Prices

Date	MPG	17	17.5	18	18.5	19	19.5	20	21	22	23	28
Dec-2019		1715	1710	1680	1670	1650	1640	1625	1620	1590	1520	850
Jan-2020		1715	1710	1680	1670	1650	1640	1625	1620	1590	1520	840
Feb-2020		1755	1750	1720	1710	1690	1680	1665	1660	1630	1560	880
Mar-2020		1715	1710	1680	1670	1650	1640	1625	1620	1590	1520	880
Apr-2020		1695	1690	1660	1650	1630	1620	1605	1600	1570	1500	820
May-2020		1675	1670	1640	1630	1610	1600	1585	1580	1550	1480	800
Jun-2020		1655	1650	1620	1610	1590	1580	1565	1560	1530	1460	780
Jul-2020		1635	1630	1600	1590	1570	1560	1545	1540	1510	1440	760
Aug-2020		1615	1610	1580	1570	1550	1540	1525	1520	1490	1420	740
Sep-2020		1595	1590	1560	1550	1530	1520	1505	1500	1470	1400	720
Oct-2020		1575	1570	1540	1530	1510	1500	1485	1480	1450	1380	700
Nov-2020		1555	1550	1520	1510	1490	1480	1465	1460	1430	1360	680
Dec-2020		1535	1530	1500	1490	1470	1460	1445	1440	1410	1340	660
Jan-2021		1515	1510	1480	1470	1450	1440	1425	1420	1390	1320	640
Feb-2021		1495	1490	1460	1450	1430	1420	1405	1400	1370	1300	620

Mulesing Status P/D's

µm	Non Mulsed	Pain Relief
18	+46	0
19	+38	+2
20	+20	+3
21	0	+2
23	0	0
25	+12	0

All prices on this sheet are listed in c/kg clean. MPG's are average North/South AWEX quoted figures. Mulesing P/D's quoted by AWEX. Basis Contract prices are published purely as a guide.

Please use above figures as a guide to submit your GTC or Target orders. Call 1800 629 396.