

Wool Weekly

LANDMARK

Thursday, 19 December 2019

WOOL MARKET MOVEMENTS

- The final Australian wool sale before the 3-week Christmas recess saw solid gains in all centres as buyers sought to fill orders in the face of a reduced offering. Strong upward trends were evident in the Merino, Skirting and Crossbred sectors. The oddment market was slightly softer, particularly in Melbourne. The EMI gained 55 cents for the week to close at 1,558 c/kg clean. The national pass-in rate was 7.7%. Sales resume in all three centres in the week beginning 13 January 2020.
- Day 1 in Sydney produced positive price movements across all MPGs. Merino fleece lines gained between 47 and 60 cents on the back of strong buyer demand. Day 2 produced further price gains, with best and good style lots with favourable additional measurements keenly sought. Finer Merino skirtings (< 17.5 µm) rose 50 - 80 cents for the week with broader types 50 to 70 cents dearer. Finer crossbred lots (< 26.5 µm) rose 20 cents with broader lots up by 30 to 40 cents on day 1 with additional price increases on day 2. Oddment lots ended day 1 20 to 30 cents dearer with crutchings posting further gains on day 2, but locks and stains were unchanged. The Northern Regional Indicator jumped 72 cents to 1,599 c/kg clean and the Northern Merino Carding Indicator gained 31 cents to 1,071 c/kg clean. The Sydney pass-in rate was 8.7%.
- High clearance rates and rising prices on day 1 in Melbourne as buyers sought out fine lots (< 19.0 µm) with best style and favourable additional measurements. Day 2 mirrored the previous day with more positive price movements as buyers continued to chase well measured lots with best style. Merino skirtings followed the fleece trend with strong gains across both sale days. Broader crossbred lots (> 29 µm) added 30 cents with finer lots up 20 cents on day 1 with another lift of 30 to 40 cents on day 2. The oddment sector weakened on day 1 losing between 10 and 20 cents, before locks and crutchings gained 20 cents on day 2. The Southern Regional Indicator rose 45 cents to 1,533 c/kg clean, while the Southern Merino Carding Indicator fell 7 cents to 1,051 c/kg clean. The Melbourne pass-in rate was 5.7%.
- A solid start on day 1 in Fremantle saw strong demand for Merino fleece lots which continued to the final hammer fall, with gains of up to 70 cents. Further small price rises, 3 to 6 cents occurred on day 2. Merino skirtings were also in favour, gaining as much as 70 cents on day 1 and 20 cents on day 2. Oddments were mixed in the west this week. The Western Regional Indicator climbed 57 cents to 1,671 c/kg clean and the Western Merino Carding Indicator gained 10 cents to 1,088 c/kg clean. The Fremantle pass-in rate was 11.8%.

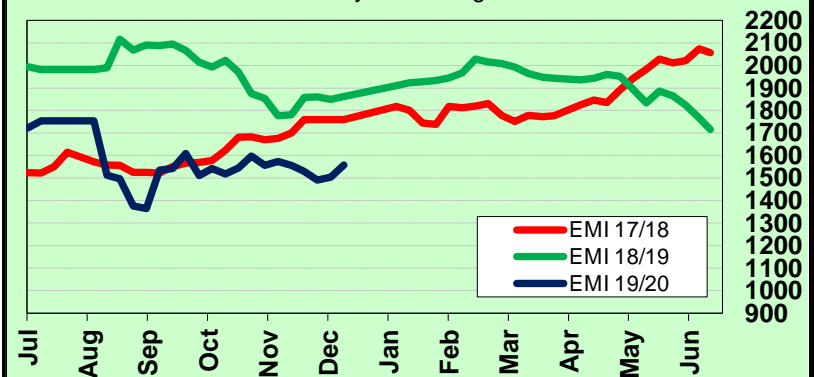
AWEX WEEKLY WOOL PRICES

Regional Indicator	North	Wkly Chg	South	Wkly Chg	West	Wkly Chg
c/kg clean	1599	+72	1533	+45	1671	+57

MICRON PRICE GUIDES						
16.5	2085	+88	2053n	+44	-	-
17	2005	+80	1989	+39	-	-
17.5	1938	+73	1938	+56	1881n	-
18	1907	+92	1863	+48	1847	+75
18.5	1838	+75	1805	+66	1799	+50
19	1818	+95	1789	+62	1787	+63
19.5	1794	+85	1779	+67	1777	+71
20	1792	+84	1771	+60	1775	+72
21	1783n	+78	1769	+60	1772n	+70
22	-	-	1763n	+54	-	-
23	-	-	-	-	-	-
24	-	-	-	-	-	-
25	-	-	-	-	-	-
26	1180n	+60	1164	+15	-	-
28	914n	+74	913	+59	-	-
30	-	-	729	+58	-	-
32	-	-	483n	+30	-	-
MC	1071n	+31	1051n	-7	1088n	+10

AWEX EMI 2017/ 18 & 2018/ 19 Seasons vs Current

Currently: 1558 c/kg clean



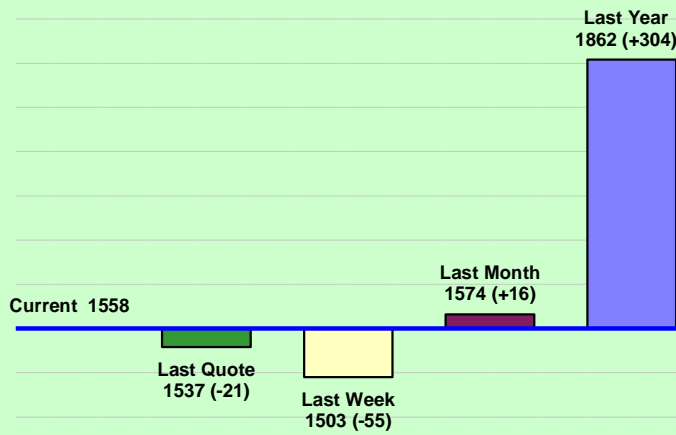
UPCOMING AUCTION VOLUMES

	23/12/2019	30/12/2019	6/01/2020
Northern	S26	S27	S28
Sydney	RECESS	RECESS	RECESS
Southern	M26	M27	M28
Melbourne	RECESS	RECESS	RECESS
Western	F26	F27	F28
Fremantle	RECESS	RECESS	RECESS
Total	RECESS	RECESS	RECESS

THIS WEEK'S SALES STATISTICS

Centre	Bales Originally	Bales Offered	Bales Sold	Pass in Rate
Northern	10,720	9,339	8,527	8.7%
Southern	19,058	18,517	17,461	5.7%
Western	7,500	6,920	6,103	11.8%
TOTAL	37,278	34,776	32,091	7.7%

AWEX Weekly Eastern Market Indicator Quote Comparisons



AUD vs USD from 06-Jul-04 to 18-Dec-19



Micron	EMI	16.5	17	17.5	18	18.5	19	19.5	20	21	22	23	25	28	AUD
Current MPG's	1558	2069	1997	1938	1885	1822	1804	1787	1782	1776	1763	-	-	914	0.685
10 year Average	1294	1866	1772	1712	1651	1586	1522	1468	1422	1391	1352	1280	1144	1013	0.862
This time last year	1862	2564	2516	2454	2387	2318	2248	2203	2182	2151	2155	2121	1388	859	0.723
10 year High	2116	3187	3007	2831	2683	2569	2462	2414	2391	2371	2350	2308	2153	1828	1.090
10 year Low	847	1265	1172	1150	1118	1072	1015	945	894	870	835	808	760	650	0.670
% Reported above current	18%	31%	32%	32%	31%	30%	23%	18%	16%	15%	13%	0%	0%	0%	97%
Diff b/w High & Current	558	1118	1010	893	798	747	659	627	610	595	587	-	-	915	0.405
Diff b/w Ave & Current	264	203	225	226	234	235	282	319	360	385	411	-	-	-100	-0.177

Percentile Bands

95%	1960	2983	2760	2577	2438	2353	2299	2276	2260	2240	2223	2153	1507	1026	1.050
90%	1834	2612	2523	2473	2360	2243	2157	2087	2072	2066	2050	1697	1264	942	1.040
80%	1544	2463	2348	2242	2135	2011	1868	1765	1683	1620	1490	1395	1176	849	1.010
75%	1497	2314	2233	2170	2071	1892	1778	1692	1599	1501	1434	1360	1139	827	0.985
60%	1285	1881	1711	1640	1587	1531	1500	1452	1395	1368	1324	1272	1025	752	0.912
50%	1227	1591	1562	1536	1505	1461	1411	1374	1338	1309	1262	1214	947	684	0.864
40%	1130	1533	1464	1435	1404	1364	1319	1289	1250	1236	1208	1163	915	665	0.777
25%	1050	1433	1340	1303	1275	1248	1209	1179	1161	1151	1131	1105	884	627	0.750
10%	937	1341	1260	1222	1182	1146	1103	1067	1003	983	945	915	716	482	0.711

Indicative Basis Contract Prices

Date	MPG	17	17.5	18	18.5	19	19.5	20	21	22	23	28
Jan-2020		1795	1790	1760	1750	1730	1720	1705	1700	1670	1600	870
Feb-2020		1845	1840	1810	1800	1780	1770	1755	1750	1720	1650	870
Mar-2020		1795	1790	1760	1750	1730	1720	1705	1700	1670	1600	870
Apr-2020		1795	1790	1760	1750	1730	1720	1705	1700	1670	1600	870
May-2020		1795	1790	1760	1750	1730	1720	1705	1700	1670	1600	870
Jun-2020		1795	1790	1760	1750	1730	1720	1705	1700	1670	1600	870
Jul-2020		1765	1760	1730	1720	1700	1690	1685	1680	1650	1580	850
Aug-2020		1755	1750	1720	1710	1690	1680	1665	1660	1630	1560	830
Sep-2020		1735	1730	1700	1690	1670	1660	1645	1640	1610	1540	810
Oct-2020		1715	1710	1680	1670	1650	1640	1625	1620	1590	1520	790
Nov-2020		1695	1690	1660	1650	1630	1620	1605	1600	1570	1500	770
Dec-2020		1675	1670	1640	1630	1610	1600	1585	1580	1550	1480	750
Jan-2021		1655	1650	1620	1610	1590	1580	1565	1560	1530	1460	730
Feb-2021		1635	1630	1600	1590	1570	1560	1545	1540	1510	1440	710
Mar-2021		1615	1610	1580	1570	1550	1540	1525	1520	1490	1420	690

Mulesing Status P/D's

µm	Non Mulsed	Pain Relief
18	+46	0
19	+38	+2
20	+20	+3
21	0	+2
23	0	0
25	+12	0

All prices on this sheet are listed in c/kg clean. MPG's are average North/South AWEX quoted figures. Mulesing P/D's quoted by AWEX. Basis Contract prices are published purely as a guide.

Please use above figures as a guide to submit your GTC or Target orders. Call 1800 629 396.