

Wool Weekly

LANDMARK

Friday, 24 January 2020

WOOL MARKET MOVEMENTS

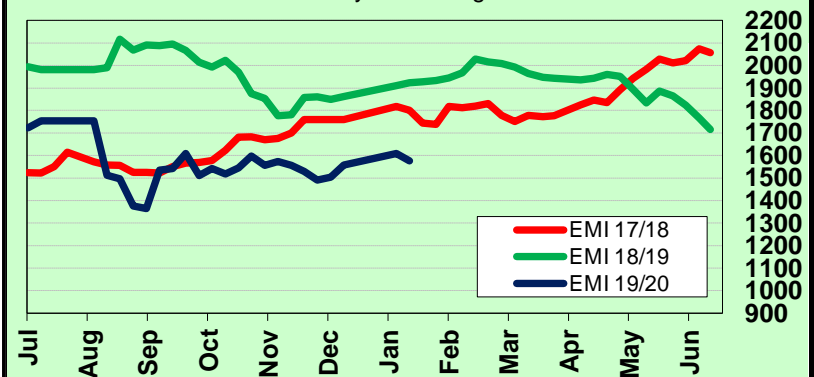
- The Australian wool market trended downwards this week with the EMI losing 33 cents to 1,576 c/kg clean. Melbourne sold in isolation on Tuesday and softened in comparison with the last week. The Sydney and Fremantle markets fell into line with Melbourne on Wednesday before settling on the final day. All three Merino Carding Indicators rose on the back of solid demand for locks. All three centres will be in action on Wednesday and Thursday next week with 40,680 bales currently rostered for sale.
- Day 1 in Sydney saw the fleece market align with Melbourne as the Merino MPGs fell between 37 and 110 cents. Broader MPGs (>19 µm) were most affected with best style well measured lots least affected. Strong buyer demand saw finer (<19.5 µm) MPGs maintain their value on day 2 with broader MPGs gaining up to 10 cents. Merino skirtings maintained last week's levels on both days, with <17.0 µm lots ending up to 20 cents dearer. Crossbred lots weakened on day 1 before stabilising on day 2. The oddment market strengthened on day 1 before ending the week unchanged. The Northern Regional Indicator dropped 61 cents to 1,617 c/kg clean while the Northern Merino Carding indicator gained 22 cents to 1,145 c/kg clean. The Sydney pass-in rate was 15.1%.
- Melbourne began this week's sales on Tuesday with falls across all Merino MPGs except the 16.5 µm which rose 3 cents. Day 2 produced early losses across all MPGs before regaining the previous days level. Day 3 saw strong positive demand for well-prepared lots with favourable additional measurements. The Merino skirtings market was variable on day 1 before strengthening on day 2 with finer (<17.5 µm) low VM (<4%) gaining 10 cents. The crossbred market weakened on day 1 with well-prepared lots attracting premiums on day 2 and maintaining their value on day 3. Locks increased in value while other categories maintained on day 1 with further small increases in locks prices on days 2 and 3. The Southern Regional Indicator lost 17 cents to 1,549 c/kg clean and the Southern Merino Carding Indicator rose 42 cents to 131 c/kg clean. The Melbourne pass-in rate was 15.2%.
- The Western market also aligned with Melbourne on day 1 with losses ranging between 9 and 31 cents across the Merino MPGs. A strong day 2 saw gains of up to 16 cents across the Merino MPGs. The Merino skirtings market was buoyant with finer lots (<17.0 µm) keenly sought on day 1 with the sector consolidating on day 2. Skirtings lots with >4% VM were up to 20 cents dearer. All oddment categories gained ground this week. The Fremantle pass-in rate climbed to 18.6%.

AWEX WEEKLY WOOL PRICES

Regional Indicator	North	Wkly Chg	South	Wkly Chg	West	Wkly Chg
c/kg clean	1617	-61	1549	-17	1685	-2
MICRON PRICE GUIDES						
16.5	2158	-44	2168n	+8	-	-
17	2082	-40	2073	-9	-	-
17.5	2002	-55	2021	+6	1941n	+1
18	1917	-88	1922	-8	1889n	-6
18.5	1875	-66	1888	-16	1841	-4
19	1809	-100	1803	-35	1795	+1
19.5	1789	-105	1784	-30	1789	-2
20	1778	-100	1776	-27	1772	-15
21	1766	-104	1758	-25	1759n	-20
22	-	-	-	-	-	-
23	-	-	-	-	-	-
24	-	-	-	-	-	-
25	-	-	-	-	-	-
26	1111n	-84	1116n	-50	-	-
28	838n	-76	835	-30	-	-
30	-	-	690n	-21	-	-
32	-	-	439n	-	-	-
MC	1145n	+22	1131n	+42	1157n	+25

AWEX EMI 2017/18 & 2018/19 Seasons vs Current

Currently: 1576 c/kg clean



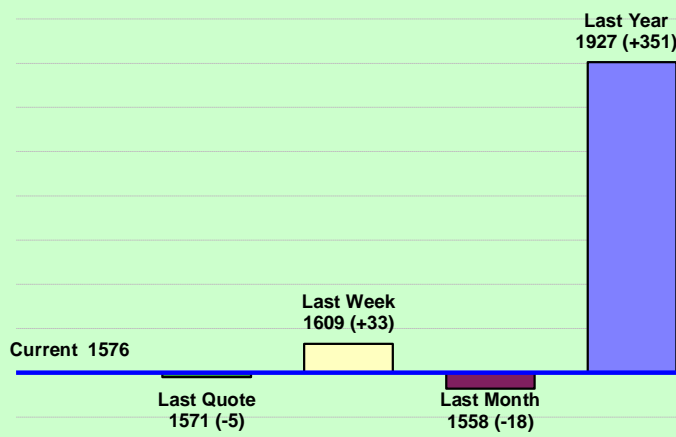
UPCOMING AUCTION VOLUMES

	28/01/2020	4/02/2020	11/02/2020
Northern	S31	S32	S33
Sydney	9,700	9,700	10,580
Southern	M31	M32	M33
Melbourne	21,538	20,125	24,850
Western	F31	F32	F33
Fremantle	9,442	8,200	8,900
Total	40,680	38,025	44,330

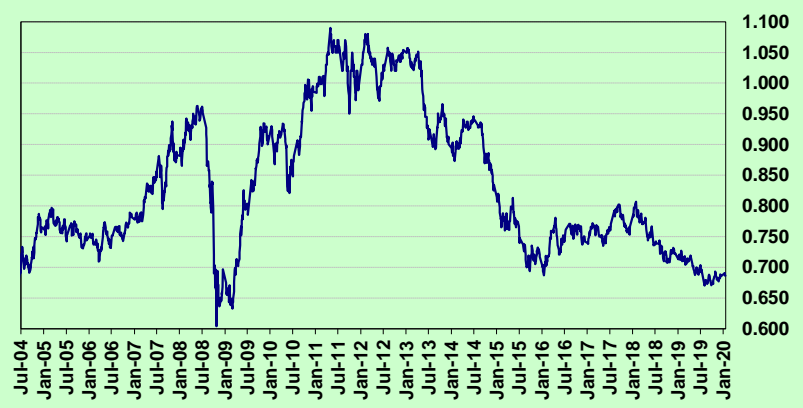
THIS WEEK'S SALES STATISTICS

Centre	Bales Originally	Bales Offered	Bales Sold	Pass in Rate
Northern	9,845	14,105	11,973	15.1%
Southern	20,551	26,847	22,760	15.2%
Western	8,646	11,714	9,540	18.6%
TOTAL	39,042	52,666	44,273	15.9%

AWEX Weekly Eastern Market Indicator Quote Comparisons



AUD vs USD from 06-Jul-04 to 23-Jan-20



Micron	EMI	16.5	17	17.5	18	18.5	19	19.5	20	21	22	23	25	28	AUD
Current MPG's	1576	2163	2078	2012	1920	1882	1806	1787	1777	1762	-	-	-	837	0.686
10 year Average	1295	1868	1773	1714	1653	1588	1524	1470	1424	1393	1354	1280	1144	1013	0.861
This time last year	1927	2550	2518	2499	2433	2363	2298	2284	2262	2240	2213	-	1482	940	0.712
10 year High	2116	3187	3007	2831	2683	2569	2462	2414	2391	2371	2350	2308	2153	1828	1.090
10 year Low	847	1265	1172	1150	1118	1072	1015	945	894	870	835	808	760	650	0.670
% Reported above current	18%	29%	30%	31%	30%	26%	23%	19%	16%	16%	0%	0%	0%	0%	96%
Diff b/w High & Current	540	1024	929	820	763	687	656	627	614	609	-	-	-	992	0.404
Diff b/w Ave & Current	281	295	304	297	267	293	282	317	353	369	-	-	-	-177	-0.175

Percentile Bands

95%	1959	2982	2760	2576	2437	2353	2298	2275	2260	2240	2223	2153	1507	1025	1.050
90%	1834	2610	2522	2472	2358	2242	2156	2083	2070	2062	2041	1697	1264	941	1.040
80%	1549	2463	2345	2241	2132	2011	1870	1769	1698	1636	1499	1395	1176	850	1.010
75%	1502	2312	2229	2168	2069	1898	1785	1704	1601	1506	1436	1360	1139	829	0.985
60%	1286	1888	1724	1644	1592	1534	1502	1453	1396	1369	1326	1272	1025	754	0.912
50%	1228	1593	1567	1538	1506	1463	1416	1378	1339	1311	1264	1214	947	686	0.860
40%	1131	1535	1468	1437	1412	1371	1320	1290	1251	1236	1208	1163	915	665	0.776
25%	1051	1434	1341	1303	1275	1248	1210	1179	1161	1151	1133	1105	884	627	0.749
10%	938	1341	1261	1223	1183	1146	1105	1069	1004	984	945	915	716	482	0.710

Indicative Basis Contract Prices

Date	MPG	17	17.5	18	18.5	19	19.5	20	21	22	23	28
Feb-2020		1845	1840	1810	1800	1780	1770	1765	1760	1730	1660	800
Mar-2020		1825	1820	1790	1780	1760	1750	1735	1730	1700	1630	800
Apr-2020		1825	1820	1790	1780	1760	1750	1735	1730	1700	1630	790
May-2020		1825	1820	1790	1780	1760	1750	1735	1730	1700	1630	780
Jun-2020		1795	1790	1760	1750	1730	1720	1705	1700	1670	1600	770
Jul-2020		1795	1790	1760	1750	1730	1720	1705	1700	1670	1600	760
Aug-2020		1765	1760	1730	1720	1700	1690	1685	1680	1650	1580	750
Sep-2020		1755	1750	1720	1710	1690	1680	1665	1660	1630	1560	740
Oct-2020		1735	1730	1700	1690	1670	1660	1645	1640	1610	1540	730
Nov-2020		1715	1710	1680	1670	1650	1640	1625	1620	1590	1520	720
Dec-2020		1695	1690	1660	1650	1630	1620	1605	1600	1570	1500	710
Jan-2021		1675	1670	1640	1630	1610	1600	1585	1580	1550	1480	700
Feb-2021		1655	1650	1620	1610	1590	1580	1565	1560	1530	1460	690
Mar-2021		1635	1630	1600	1590	1570	1560	1545	1540	1510	1440	680
Apr-2021		1615	1610	1580	1570	1550	1540	1525	1520	1490	1420	670

Mulesing Status P/D's

µm	Non Mulsed	Pain Relief
18	+46	0
19	+38	+2
20	+20	+3
21	0	+2
23	0	0
25	+12	0

All prices on this sheet are listed in c/kg clean. MPG's are average North/South AWEX quoted figures. Mulesing P/D's quoted by AWEX. Basis Contract prices are published purely as a guide.

Please use above figures as a guide to submit your GTC or Target orders. Call 1800 629 396.