

Wool Weekly



Friday, 13 March 2020

WOOL MARKET MOVEMENTS

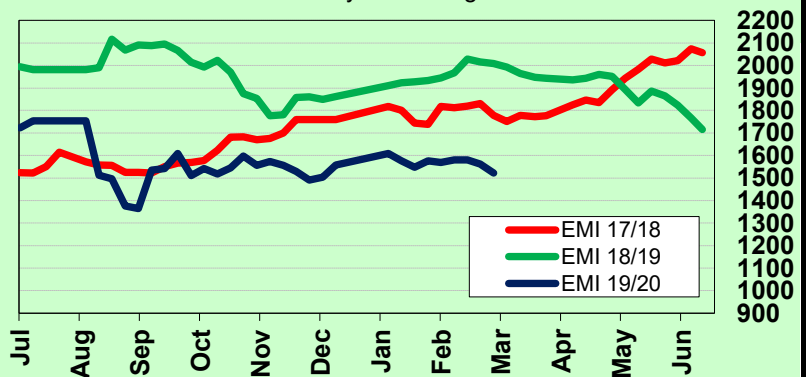
- Weaker demand in all centres saw the EMI lose 41 cents to 1,521 c/kg clean and high pass-in rates (25.5%). Despite the overall weaker market, the limited supply of well measured better style lots with low VM were keenly sought and maintained their value.
- Price falls (40 to 72 cents) occurred across all MPGs in Sydney on Wednesday as the predominantly good style offering failed to spark buyer interest. Lots with favourable additional measurements were less affected. The fleece market steadied on Thursday, with finer (<18.0 µm) MPGs sliding up to 20 cents. Broader lots maintained their value. Merino skirtings eased up to 60 cents on day 1 and were unchanged on day 2. The crossbred market was unchanged on day 1 before 26 µm lots lost up to 30 cents on day 2. Locks, crutchings and stains eased by 20 to 30 cents on Wednesday before locks lost a further 10 to 15 cents on Thursday. The Northern Regional Indicator fell 48 cents to 1,557 c/kg clean and the Northern Merino Carding Indicator lost 36 cents to 1,054 c/kg clean. The Sydney pass-in rate was 20.4%.
- The Melbourne market tracked downward on day 1, falling up to 80 cents across all MPGs, with finer types most affected. However, prices began to recover as the sale progressed. Day 1 opened weaker as growers resisted the market level and passed lots in. The market strengthened as the day progressed as buyers sought out best style lots with favourable additional measurements. High VM (>4%) skirtings >18.0 µm lost 70 cents on Wednesday before easing further on Thursday. Well prepared crossbred lots maintained their value on day 1 while poorly prepared lots were out of favour and passed in, before the sector consolidated on day 2. The oddment sector lost ground on day 1, with mixed results on day 2. The Southern Regional Indicator dropped 38 cents to 1,498 c/kg clean and the Southern Merino Carding Indicator lost 27 cents. The Melbourne pass-in rate was 25.2%.
- Losses also occurred in the West on Wednesday, with finer lots most affected easing up to 53 cents and pass-in rates nearly 40%. The market opened stronger on Thursday, but buyer demand fell away as the day progressed and pass-in rates climbed towards 30%. The Merino skirtings market eased on Wednesday, before finer (<18.0 µm) lots with <3% VM attracted buyer demand and rose up to 25 cents on Thursday. Broader skirtings, 19 µm lost 20 to 25 cents while > 19.5µm lots were unchanged. The oddment sector trended downwards on both sale days. The Western Regional Indicator closed at 1,616 c/kg clean, down 46 cents and the Western Merino Carding Indicator fell 40 cents to 1,084 c/kg clean. The Fremantle pass-in rate was 29.9%.

AWEX WEEKLY WOOL PRICES

Regional Indicator	North	Wkly Chg	South	Wkly Chg	West	Wkly Chg
c/kg clean	1557	-48	1498	-38	1616	-46
MICRON PRICE GUIDES						
16.5	2093	-65	2046n	-75	-	-
17	1987	-85	1994	-64	-	-
17.5	1910	-83	1948	-68	-	-
18	1850	-82	1888	-55	1792n	-69
18.5	1794	-64	1800	-49	1744n	-46
19	1768	-58	1780	-19	1740	-34
19.5	1763	-52	1771	-26	1737	-35
20	1748	-55	1753	-29	1726	-43
21	1743n	-40	1736	-30	1705n	-53
22	-	-	1754n	-	-	-
23	-	-	-	-	-	-
24	-	-	-	-	-	-
25	-	-	-	-	-	-
26	1123n	-22	1138n	-15	-	-
28	875n	-9	880	-1	-	-
30	-	-	679n	+3	-	-
32	-	-	411n	+3	-	-
MC	1054n	-36	1081n	-27	1084n	-40

AWEX EMI 2017/18 & 2018/19 Seasons vs Current

Currently: 1521 c/kg clean



UPCOMING AUCTION VOLUMES

	17/03/2020	24/03/2020	31/03/2020
Northern	S38	S39	S40
Sydney	9,131	8,281	7,516
Southern	M38	M39	M40
Melbourne	29,345	24,050	19,574
Western	F38	F39	F40
Fremantle	11,777	9,400	7,550
Total	50,253	41,731	34,640

THIS WEEK'S SALES STATISTICS

Centre	Bales Originally	Bales Offered	Bales Sold	Pass in Rate
Northern	8,630	8,864	7,057	20.4%
Southern	18,925	23,204	17,345	25.2%
Western	8,400	11,511	8,064	29.9%
TOTAL	35,955	43,579	32,466	25.5%

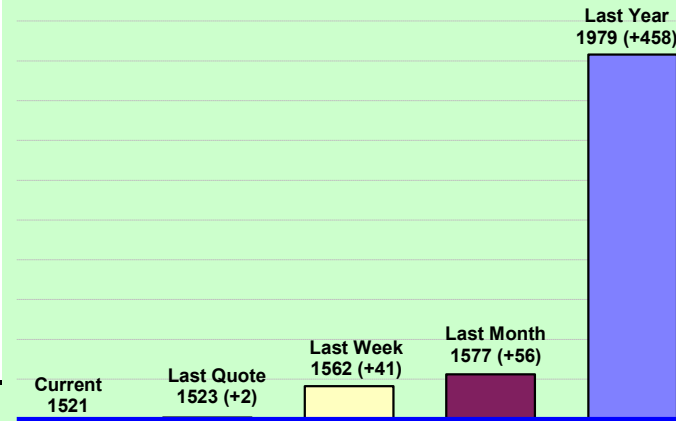
13 Mar 2020

Nutrien Wool Report

EMI 1521 NMI 1678 SMI 1498 WMI 1616
Average Nth-Sth MPG's as reported on 12 Mar 2020



AWEX Weekly Eastern Market Indicator Quote Comparisons



AUD vs USD from 06-Jul-04 to 12-Mar-20



Micron	EMI	16.5	17	17.5	18	18.5	19	19.5	20	21	22	23	25	28	AUD
Current MPG's	1521	2070	1991	1929	1869	1797	1774	1767	1751	1740	1754	-	-	878	0.646
10 year Average	1299	1871	1777	1717	1656	1591	1527	1474	1428	1398	1356	1280	1144	726	0.859
This time last year	1979	2545	2503	2471	2424	2370	2333	2309	2301	2284	2285	-	-	1141	0.706
10 year High	2116	3187	3007	2831	2683	2569	2462	2414	2391	2371	2350	2308	2153	1323	1.090
10 year Low	847	1265	1172	1150	1118	1072	1015	945	894	870	835	808	760	432	0.646
% Reported above current	24%	32%	33%	34%	33%	33%	26%	21%	19%	18%	14%	0%	0%	17%	100%
Diff b/w High & Current	595	1118	1016	902	814	772	688	647	641	632	596	-	-	446	0.444
Diff b/w Ave & Current	222	199	214	212	213	206	247	293	322	342	398	-	-	151	-0.213

Percentile Bands

95%	1958	2980	2760	2574	2435	2352	2297	2275	2259	2239	2222	2153	1506	1023	1.050
90%	1833	2618	2532	2470	2355	2241	2155	2078	2065	2053	2034	1697	1265	940	1.040
80%	1556	2490	2363	2240	2129	2003	1864	1778	1722	1655	1508	1395	1177	852	1.010
75%	1513	2319	2238	2165	2065	1888	1788	1713	1617	1524	1440	1360	1141	830	0.984
60%	1290	1806	1662	1658	1596	1543	1509	1462	1402	1375	1333	1272	1025	756	0.909
50%	1233	1578	1536	1546	1511	1467	1421	1383	1343	1315	1266	1214	948	688	0.851
40%	1133	1520	1445	1446	1419	1385	1326	1292	1253	1237	1209	1163	916	666	0.774
25%	1051	1419	1332	1305	1276	1250	1210	1180	1163	1153	1134	1105	884	627	0.747
10%	940	1328	1259	1223	1183	1147	1107	1072	1010	987	946	915	716	483	0.707

Indicative Basis Contract Prices

Date	MPG	17	17.5	18	18.5	19	19.5	20	21	22	23	28
Mar-2020		1765	1760	1730	1720	1700	1690	1655	1650	1620	1550	800
Apr-2020		1765	1760	1730	1720	1700	1690	1655	1650	1620	1550	800
May-2020		1745	1740	1710	1700	1680	1670	1655	1650	1620	1550	800
Jun-2020		1745	1740	1710	1700	1680	1670	1655	1650	1620	1550	800
Jul-2020		1775	1770	1740	1730	1710	1700	1685	1680	1650	1580	770
Aug-2020		1725	1720	1690	1680	1660	1650	1635	1630	1600	1530	760
Sep-2020		1705	1700	1670	1660	1640	1630	1615	1610	1580	1510	750
Oct-2020		1675	1670	1640	1630	1610	1600	1585	1580	1550	1480	740
Nov-2020		1645	1640	1610	1600	1580	1570	1555	1550	1520	1450	730
Dec-2020		1625	1620	1590	1580	1560	1550	1535	1530	1500	1430	720
Jan-2021		1605	1600	1570	1560	1540	1530	1515	1510	1480	1410	710
Feb-2021		1585	1580	1550	1540	1520	1510	1495	1490	1460	1390	700
Mar-2021		1565	1560	1530	1520	1500	1490	1475	1470	1440	1370	690
Apr-2021		1545	1540	1510	1500	1480	1470	1455	1450	1420	1350	680
May-2021		1525	1520	1490	1480	1460	1450	1435	1430	1400	1330	670

Mulesing Status P/D's

µm	Non Mulsed	Pain Relief
18	+42	+2
19	+40	0
20	+30	0
21	0	0
23	0	0
25	+12	0

All prices on this sheet are listed in c/kg clean. MPG's are average North/South AWEX quoted figures. Mulesing P/D's quoted by AWEX. Basis Contract prices are published purely as a guide.

Please use above figures as a guide to submit your GTC or Target orders. Call 1800 629 396.