

# Wool Weekly



Thursday, 7 May 2020

## WOOL MARKET MOVEMENTS

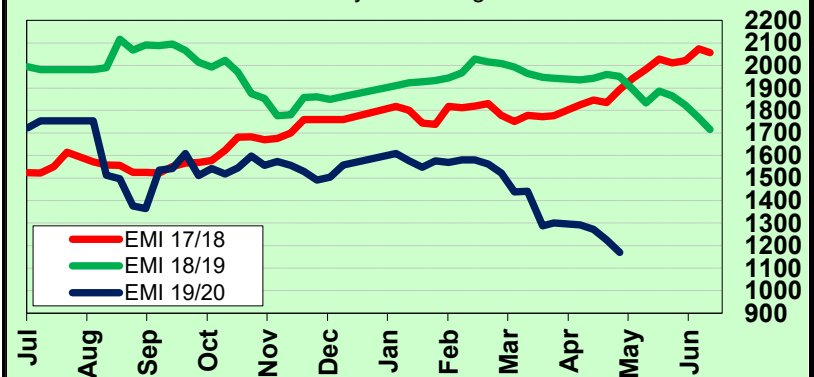
- Limited quantities rostered for sale this week together with a pre-sale withdrawal rate of 11.8%, saw both the Northern and Western region reduced to a single sale day. Soft demand was evident in all three centres, although buyers keenly sought best style well measured lots. Poorer style lots with unfavourable additional measurements dominated the selection and were discounted putting downward pressure on all MPGs. The EMI lost 55 cents to 1,170 c/kg clean and the national pass-in rate was 7.2% lower than last week at 18.5%.
- Wednesday was the only sale day in Sydney this week, with the northern market slipping further. Finer (< 18.5 µm) MPGs fell between 21 to 43 cents while broader MPGs lost up to 65 cents. The Merino skirting sector trended lower, dropping between 30 and 50 cents. Crossbred MPGs were 45 to 50 cents lower and all oddment categories lost ground. The Northern Regional Indicator lost 45 cents to 1,214 c/kg clean and the Northern Merino Carding Indicator lost 44 cents to 796 c/kg clean. The Sydney pass-in rate was 18.2% with 681 bales withdrawn prior to sale.
- Buyers continued their focus on fine (< 18.5 µm) well measured stylish fleece lots in Melbourne on Tuesday, with the fine MPGs losing between 13 and 20 cents. The broader MPGs lost up to 57 cents for the day. Wednesday saw further price falls (9 to 45 cents) across all MPGs. Merino skirtings followed the fleece sector on both sale days, with finer low VM (< 2%) lots easing up to 15 cents on day 1 and a further 25 cents on day 2. Broader lots with higher VM fell up to 30 cents on day 1 and a further 40 to 50 cents on day 2. Well-prepared crossbred lots maintained last week's levels, poorly prepared lots were heavily discounted or were passed in on Tuesday with the 28 µm MPG dropping 72 cents on Wednesday. The oddment sector weakened on Tuesday with mixed results on Wednesday. The Southern Regional Indicator fell 62 cents to 1,142 c/kg clean and the Southern Merino Carding Indicator lost 31 cents to 812 c/kg clean. The Melbourne pass-in rate was 18.5%, with 1,901 bales withdrawn prior to sale.
- Tuesday's single sale day in Fremantle continued the trend of the previous week as prices fell across all MPGs, with the finer MPGs less affected. Prices paid for the small Merino skirtings offering was determined by fibre diameter, with finer (≤ 17.0 µm) lots unchanged and broader lots up to 50 cents cheaper. All oddments categories were cheaper. The Western Regional Indicator dropped 64 cents to 1,246 c/kg clean and the Western Merino Carding Indicator lost 27 cents to 834 c/kg clean. The Fremantle pass-in rate was 18.8%, with 804 bales withdrawn.

## AWEX WEEKLY WOOL PRICES

Regional Indicator	North	Wkly Chg	South	Wkly Chg	West	Wkly Chg
c/kg clean	1214	-45	1142	-62	1246	-64
MICRON PRICE GUIDES						
16.5	1745	-43	1740n	-60	-	-
17	1657	-40	1631	-64	-	-
17.5	1560	-21	1554	-34	-	-
18	1488	-30	1469	-50	1444	-31
18.5	1443	-36	1437	-28	1385	-35
19	1353	-61	1353	-84	1333	-91
19.5	1313	-65	1320	-86	1323	-80
20	1303	-59	1299	-83	1309	-92
21	1278n	-	1286	-84	1291	-87
22	-	-	1294n	-70	-	-
23	-	-	-	-	-	-
24	-	-	-	-	-	-
25	-	-	-	-	-	-
26	790n	-45	846n	-15	-	-
28	611n	-50	596	-72	-	-
30	-	-	476	-2	-	-
32	-	-	271n	0	-	-
MC	796n	-44	812n	-31	834	-27

## AWEX EMI 2017/18 & 2018/19 Seasons vs Current

Currently: 1170 c/kg clean



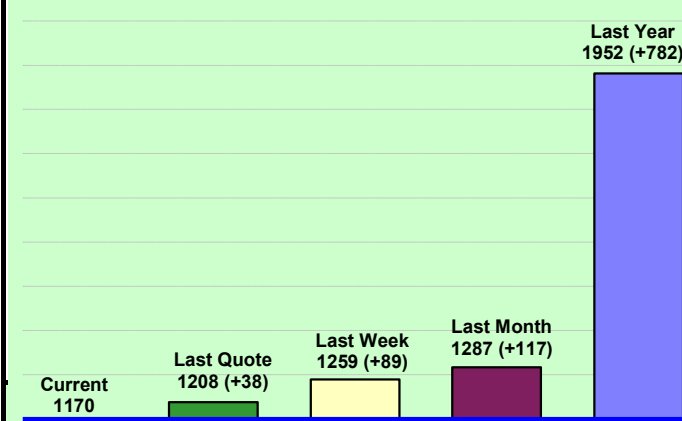
## UPCOMING AUCTION VOLUMES

	11/05/2020	18/05/2020	25/05/2020
Northern	S46	S47	S48
Sydney	6,209	6,305	5,337
Southern	M46	M47	M48
Melbourne	13,994	15,965	14,968
Western	F46	F47	F48
Fremantle	5,457	5,950	5,700
<b>Total</b>	<b>25,660</b>	<b>28,220</b>	<b>26,005</b>

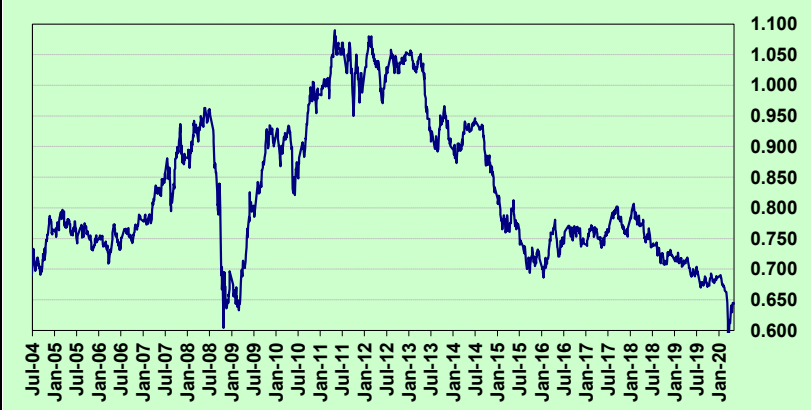
## THIS WEEK'S SALES STATISTICS

Centre	Bales Originally	Bales Offered	Bales Sold	Pass in Rate
Northern	7,831	5,526	4,522	18.2%
Southern	18,295	15,466	12,611	18.5%
Western	7,200	4,346	3,528	18.8%
<b>TOTAL</b>	<b>33,326</b>	<b>25,338</b>	<b>20,661</b>	<b>18.5%</b>

### AWEX Weekly Eastern Market Indicator Quote Comparisons



### AUD vs USD from 06-Jul-04 to 06-May-20



Micron	EMI	16.5	17	17.5	18	18.5	19	19.5	20	21	22	23	25	28	AUD
<b>Current MPG's</b>	1170	1743	1644	1557	1479	1440	1353	1317	1301	1282	1294	-	-	604	0.643
<b>10 year Average</b>	1299	1871	1777	1717	1656	1591	1527	1474	1430	1399	1358	1280	1144	727	0.855
<b>This time last year</b>	1952	2458	2422	2405	2380	2323	2284	2262	2253	2246	2235	-	-	1323	0.697
<b>10 year High</b>	2116	3187	3007	2831	2683	2569	2462	2414	2391	2371	2350	2308	2153	1323	1.090
<b>10 year Low</b>	847	1265	1172	1150	1118	1072	1015	945	894	870	835	808	760	432	0.557
<b>% Reported above current</b>	58%	47%	46%	49%	55%	55%	58%	58%	56%	55%	46%	0%	0%	81%	99%
<b>Diff b/w High &amp; Current</b>	946	1445	1363	1274	1204	1129	1109	1097	1090	1089	1056	-	-	720	0.447
<b>Diff b/w Ave &amp; Current</b>	-129	-129	-133	-160	-177	-151	-174	-158	-129	-117	-64	-	-	-123	-0.212

#### Percentile Bands

<b>95%</b>	1957	2978	2758	2573	2433	2351	2295	2274	2259	2238	2222	2153	1506	1021	1.050
<b>90%</b>	1829	2618	2532	2463	2354	2239	2151	2074	2053	2051	2027	1697	1265	939	1.040
<b>80%</b>	1553	2490	2363	2234	2125	2000	1862	1774	1712	1653	1517	1395	1177	853	1.006
<b>75%</b>	1509	2319	2238	2159	2055	1886	1785	1711	1619	1527	1445	1360	1141	831	0.979
<b>60%</b>	1291	1806	1662	1672	1597	1546	1511	1468	1406	1378	1335	1272	1025	757	0.907
<b>50%</b>	1235	1578	1536	1550	1514	1472	1425	1389	1346	1317	1269	1214	948	689	0.831
<b>40%</b>	1144	1520	1445	1457	1428	1393	1329	1298	1258	1240	1211	1163	916	668	0.772
<b>25%</b>	1053	1419	1332	1309	1279	1252	1210	1181	1165	1155	1136	1105	884	628	0.744
<b>10%</b>	940	1328	1259	1223	1184	1148	1111	1074	1013	988	948	915	716	484	0.703

#### Indicative Basis Contract Prices

Date	MPG	17	17.5	18	18.5	19	19.5	20	21	22	23	28
May-2020		1315	1310	1280	1270	1250	1230	1180	1170	1140	1070	600
Jun-2020		1315	1310	1280	1270	1250	1230	1180	1170	1140	1070	600
Jul-2020		1315	1310	1280	1270	1250	1230	1180	1170	1140	1070	600
Aug-2020		1305	1300	1270	1260	1240	1220	1170	1160	1130	1060	600
Sep-2020		1295	1290	1260	1250	1230	1210	1160	1150	1120	1050	590
Oct-2020		1295	1290	1260	1250	1230	1210	1160	1150	1120	1050	580
Nov-2020		1285	1280	1250	1240	1220	1200	1150	1140	1110	1040	570
Dec-2020		1285	1280	1250	1240	1220	1200	1150	1140	1110	1040	560
Jan-2021		1275	1270	1240	1230	1210	1190	1140	1130	1100	1030	550
Feb-2021		1265	1260	1230	1220	1200	1180	1130	1120	1090	1020	540
Mar-2021		1255	1250	1220	1210	1190	1170	1120	1110	1080	1010	530
Apr-2021		1245	1240	1210	1200	1180	1160	1110	1100	1070	1000	520
May-2021		1235	1230	1200	1190	1170	1150	1100	1090	1060	990	510
Jun-2021		1225	1220	1190	1180	1160	1140	1090	1080	1050	980	500
Jul-2021		1215	1210	1180	1170	1150	1130	1080	1070	1040	970	490

#### Mulesing Status P/D's

µm	Non Mulsed	Pain Relief
18	+42	+2
19	+40	0
20	+30	0
21	0	0
23	0	0
25	+12	0

All prices on this sheet are listed in c/kg clean. MPG's are average North/South AWEX quoted figures. Mulesing P/D's quoted by AWEX. Basis Contract prices are published purely as a guide.

Please use above figures as a guide to submit your GTC or Target orders. Call 1800 629 396.