

Wool Weekly



Thursday, 14 May 2020

WOOL MARKET MOVEMENTS

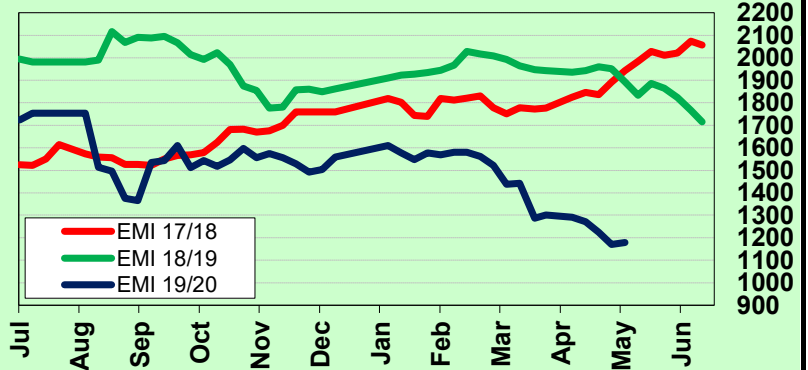
- A welcome rise in the Australian wool market this week with the EMI gaining 9 cents to 1,179 c/kg clean. Stylish, well measured, fine Merino fleece and skirting lots continued to attract keen buyer competition. The national offering was 23,371 bales, down 1,967 from last week with 21,690 bales currently rostered for sale next week. The national pass-in rate was 9.7% lower than last week at 8.8%.
- Another one-day sale in Sydney this week produced welcome price gains, up 24 to 40 cents, across all Merino MPGs. Buyers sought out stylish (MF4) lots with favourable additional measurements. Merino skirtings gained 20 - 40 cents, as demand for well measured, fine (<17.5 µm), MF4 lots saw these lots gain up to 50 cents. The crossbred sector eased by 10 to 20 cents. Finer (<17.5 µm) locks were also in favour rising up to 30 cents with broader locks and other oddment categories remaining at last week's level. The Northern Regional Indicator gained 16 cents to 1,230 c/kg clean while the Northern Merino Carding Indicator fell 1 cent to 795 c/kg clean. The Sydney pass-in rate was 4.8% with 5,788 bales sold and 747 withdrawn.
- Merino fleece MPGs gained between 12 and 47 cents on Tuesday in Melbourne. Well measured, stylish lots were in demand rising up to 30 cents with some low CVH lots gaining up to 45 cents. Wednesday's offering was dominated by lower yielding, broader (<19.5 µm) lots which saw these MPGs lose 13 to 24 cents. Stylish, low VM (<3%) Merino skirtings lifted up to 30 cents on day 1, with a further lift of 10 to 15 cents on day 2. Crossbred lots fell up to 25 cents on day 1, well-prepared lots maintained this value on day 2 but buyer disinterest in poorly prepared lots saw these passed-in. Oddments lost ground on day 1 as low yielding, high VM lots dominated the offering before stylish locks, crutching and stains gained up to 15 cents on day 2. The Southern Regional Indicator lifted 5 cents to 1,147 c/kg clean and the Southern Merino Carding Indicator gained 2 cents to 814 c/kg clean. The Melbourne pass-in rate was 11.4% with 1,411 bales withdrawn.
- Fremantle sold on Wednesday with finer MPGs in favour. The 18.0 µm MPG gained 41 cents and the 18.5 µm MPG 22 cents. The 19.0 and 19.5 µm MPGs lifted (up 15 and 16 cents), but broader MPGs fell 20 to 22 cents. Low VM (<3.0%) fine (<18.5 µm) Merino skirtings gained up to 30 cents. Locks lost up to 25 cents, with other categories of oddments maintaining last weeks levels. The Western Regional Indicator lost 9 cents to 1,237 c/kg clean and the Western Merino Carding Indicator lost 8 cents to 826 c/kg clean. The Fremantle pass-in rate was 7.1%.

AWEX WEEKLY WOOL PRICES

Regional Indicator	North	Wkly Chg	South	Wkly Chg	West	Wkly Chg
c/kg clean	1230	+16	1147	+5	1237	-9
MICRON PRICE GUIDES						
16.5	1785	+40	1770n	+30	-	-
17	1683	+26	1635	+4	-	-
17.5	1595	+35	1570	+16	-	-
18	1517	+29	1509	+40	1485n	+41
18.5	1467	+24	1456	+19	1407n	+22
19	1391	+38	1398	+45	1348	+15
19.5	1349	+36	1343	+23	1339	+16
20	1332	+29	1311	+12	1289	-20
21	1305	+27	1276n	-10	1269n	-22
22	-	-	0	-	-	-
23	-	-	-	-	-	-
24	-	-	-	-	-	-
25	-	-	-	-	-	-
26	770	-20	-	-	-	-
28	-	-	576	-20	-	-
30	-	-	450n	-26	-	-
32	-	-	270n	-1	-	-
MC	795	-1	814n	+2	826n	-8

AWEX EMI 2017/18 & 2018/19 Seasons vs Current

Currently: 1179 c/kg clean



UPCOMING AUCTION VOLUMES

	18/05/2020	25/05/2020	1/06/2020
Northern	S47	S48	S49
Sydney	6,672	5,337	6,284
Southern	M47	M48	M49
Melbourne	10,404	14,968	12,115
Western	F47	F48	F49
Fremantle	4,614	5,700	
Total	21,690	26,005	18,399

THIS WEEK'S SALES STATISTICS

Centre	Bales Originally	Bales Offered	Bales Sold	Pass in Rate
Northern	6,532	6,078	5,788	4.8%
Southern	17,119	12,593	11,163	11.4%
Western	6,350	4,700	4,364	7.1%
TOTAL	30,001	23,371	21,315	8.8%

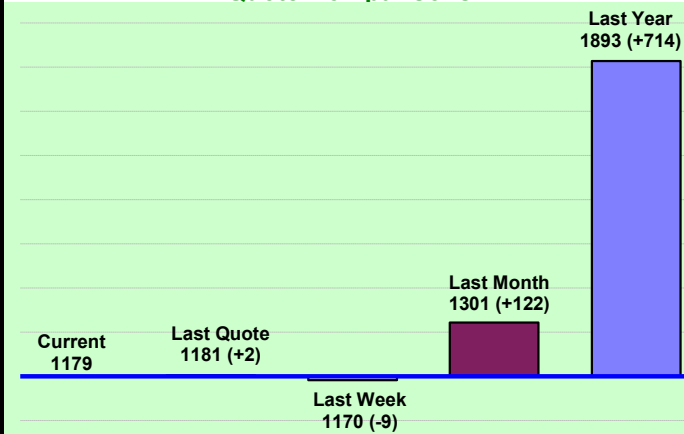
14 May 2020

Nutrien Wool Report

EMI 1179 NMI 1230 SMI 1147 WMI 1237
Average Nth-Sth MPG's as reported on 13 May 2020



AWEX Weekly Eastern Market Indicator Quote Comparisons



AUD vs USD from 06-Jul-04 to 13-May-20



Micron	EMI	16.5	17	17.5	18	18.5	19	19.5	20	21	22	23	25	28	AUD
Current MPG's	1179	1770	1635	1570	1509	1456	1398	1343	1311	1276	-	-	-	576	0.648
10 year Average	1299	1871	1777	1717	1655	1591	1527	1474	1430	1399	1358	1280	1144	727	0.855
This time last year	1893	2385	2360	2351	2332	2271	2225	2192	2189	2200	2177	-	-	1180	0.692
10 year High	2116	3187	3007	2831	2683	2569	2462	2414	2391	2371	2350	2308	2153	1323	1.090
10 year Low	847	1265	1172	1150	1118	1072	1015	945	894	870	835	808	760	432	0.557
% Reported above current	57%	47%	47%	47%	51%	52%	54%	57%	55%	56%	0%	0%	0%	85%	98%
Diff b/w High & Current	937	1417	1372	1261	1174	1113	1064	1071	1080	1095	-	-	-	747	0.442
Diff b/w Ave & Current	-120	-101	-142	-147	-146	-135	-129	-131	-119	-123	-	-	-	-151	-0.207

Percentile Bands

95%	1957	2978	2758	2573	2433	2351	2295	2274	2258	2238	2222	2153	1506	1021	1.050
90%	1829	2618	2532	2462	2354	2238	2151	2074	2053	2050	2027	1697	1265	939	1.040
80%	1551	2490	2363	2234	2125	2000	1860	1774	1712	1652	1517	1395	1177	853	1.006
75%	1508	2319	2238	2159	2054	1885	1785	1711	1618	1527	1445	1360	1141	831	0.979
60%	1290	1806	1662	1671	1597	1545	1510	1468	1406	1378	1335	1272	1025	756	0.907
50%	1235	1578	1536	1552	1513	1471	1425	1388	1346	1316	1269	1214	948	689	0.831
40%	1145	1520	1445	1457	1429	1395	1331	1298	1260	1241	1211	1163	916	668	0.772
25%	1053	1419	1332	1309	1279	1252	1211	1182	1165	1155	1136	1105	884	628	0.743
10%	940	1328	1259	1223	1184	1148	1111	1074	1014	989	948	915	716	484	0.702

Indicative Basis Contract Prices

Date	MPG	17	17.5	18	18.5	19	19.5	20	21	22	23	28
May-2020		1385	1380	1350	1340	1320	1300	1295	1285	1255	1185	600
Jun-2020		1385	1380	1350	1340	1320	1300	1295	1285	1255	1185	600
Jul-2020		1380	1375	1345	1335	1315	1295	1285	1275	1245	1175	600
Aug-2020		1375	1370	1340	1330	1310	1290	1280	1270	1240	1170	600
Sep-2020		1375	1370	1340	1330	1310	1290	1270	1260	1230	1160	590
Oct-2020		1375	1370	1340	1330	1310	1290	1270	1260	1230	1160	580
Nov-2020		1375	1370	1340	1330	1310	1290	1270	1260	1230	1160	570
Dec-2020		1375	1370	1340	1330	1310	1290	1260	1250	1220	1150	560
Jan-2021		1375	1370	1340	1330	1310	1290	1260	1250	1220	1150	550
Feb-2021		1375	1370	1340	1330	1310	1290	1260	1250	1220	1150	540
Mar-2021		1375	1370	1340	1330	1310	1290	1250	1240	1210	1140	530
Apr-2021		1365	1360	1330	1320	1300	1280	1250	1240	1210	1140	520
May-2021		1355	1350	1320	1310	1290	1270	1240	1230	1200	1130	510
Jun-2021		1345	1340	1310	1300	1280	1260	1230	1220	1190	1120	500
Jul-2021		1335	1330	1300	1290	1270	1250	1220	1210	1180	1110	490

Mulesing Status P/D's

µm	Non Mulsed	Pain Relief
18	+42	+2
19	+40	0
20	+30	0
21	0	0
23	0	0
25	+12	0

All prices on this sheet are listed in c/kg clean. MPG's are average North/South AWEX quoted figures. Mulesing P/D's quoted by AWEX. Basis Contract prices are published purely as a guide.

Please use above figures as a guide to submit your GTC or Target orders. Call 1800 629 396.