

# Wool Weekly



Thursday, 28 May 2020

## WOOL MARKET MOVEMENTS

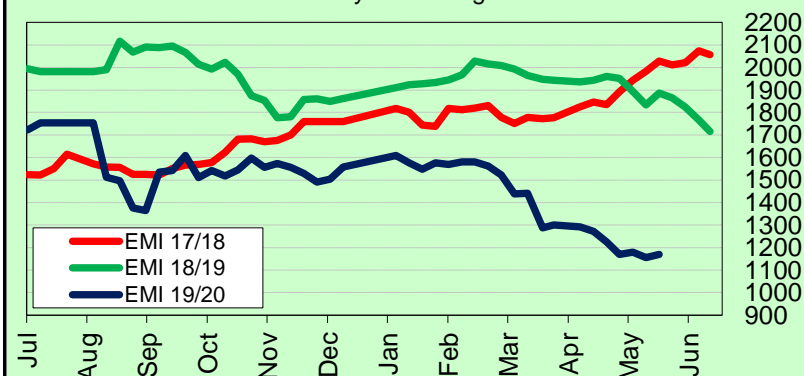
- Positive price movements across all MPGs at all three selling centres was a welcome sight in the Australian wool market this week. The skirtings, crossbred and oddment sectors all trended upwards. The EMI gained 15 cents to 1,170 c/kg clean as buyers competed to secure lots from the small national offering of 18,828 bales (down 2,273 on last week) of which 51.9% carried a mulesing declaration. The national pass-in rate was 7.9% down 4.7% on last week. The small quantity, 17,136 bales, scheduled for next week will be sold in Sydney and Melbourne.
- Another one-day sale in Sydney produced price rises (18 to 29 cents) across all Merino fleece MPGs. A small offering of 5,429 bales with 503 bales withdrawn. Buyers sought out fine (<19.5 µm) well measured, stylish (MF4 & MF5) lots which gained up to 30 cents. Fine (<17.5 µm) Merino skirtings gained 20 to 30 cents, with broader lots maintaining last week's levels. Crossbreds gained 20 cents and oddments strengthened on last week. The Northern Regional Indicator rose 19 cents to 1,212 c/kg clean and the Northern Merino Carding Indicator gained 20 cents to 843 c/kg clean. The Sydney pass-in rate was 3.9%.
- MF4 fleece lots with favourable additional measurements rose up to 35 cents on Tuesday as the Melbourne sales opened strongly. Wednesday's Merino fleece market consolidated with small price movements (-6 to +5 cents) across all MPGs. Merino skirtings lifted on day 1 as buyers competed for the limited selection of fine (<18.5 µm) MF4, low VM lots and rose further on day 2 despite lower yielding, high VM lots losing 20 cents. Well-prepared crossbred lots recorded strong gains for the week, while poorly prepared lots either lost 20 cents or were passed in. Strong competition for MF4 oddments on day 1 with further gains (20 cents) for locks, crutchings and stains on day 2 with low yielding carbonising lots losing 20 cents. The Southern Regional Indicator closed at 1,143 c/kg clean up 11 cents and the Southern Merino Carding Indicator rose 16 cents to 872 c/kg clean. The Melbourne pass-in rate was 9.1% with 1,228 bales withdrawn.
- All Merino MPGs rose at least 29 cents during Wednesday's one-day Fremantle sale. A small quantity of Merino skirtings was either unchanged (<19.0 µm) or eased up to 35 cents (>19.5 µm). All categories of oddments gained between 30 to 40 cents. The Western Regional Indicator climbed 25 cents to 1,239 c/kg clean and the Western Merino Carding Indicator jumped 37 cents to 876 c/kg clean. The Fremantle pass-in rate was 10.5% with 652 bales withdrawn.

## AWEX WEEKLY WOOL PRICES

Regional Indicator	North	Wkly Chg	South	Wkly Chg	West	Wkly Chg
c/kg clean	1212	+19	1143	+11	1239	+25
MICRON PRICE GUIDES						
16.5	1759	+26	1743n	+21	-	-
17	1653	+28	1620	+19	-	-
17.5	1562	+27	1543	+5	-	-
18	1498	+25	1495	+28	1486n	+32
18.5	1429	+26	1439	+25	1401n	+29
19	1363	+24	1373	+19	1350	+39
19.5	1323	+29	1330	+22	1330	+35
20	1296	+18	1305	+9	1299	+31
21	1275	+20	1299	+15	1289n	+38
22	-	-	-	-	-	-
23	-	-	-	-	-	-
24	-	-	-	-	-	-
25	-	-	-	-	-	-
26	-	-	801	-	-	-
28	600	+20	596	+20	-	-
30	-	-	459n	+9	-	-
32	-	-	315n	-	-	-
MC	843	+20	872n	+16	876n	+37

## AWEX EMI 2017/ 18 & 2018/ 19 Seasons vs Current

Currently: 1170 c/kg clean



## UPCOMING AUCTION VOLUMES

	1/06/2020	8/06/2020	15/06/2020
Northern	S49	S50	S51
Sydney	7,184	5,250	6,634
Southern	M49	M50	M51
Melbourne	9,952	12,543	11,855
Western	F49	F50	F51
Fremantle		5,850	
Total	17,136	23,643	18,489

## THIS WEEK'S SALES STATISTICS

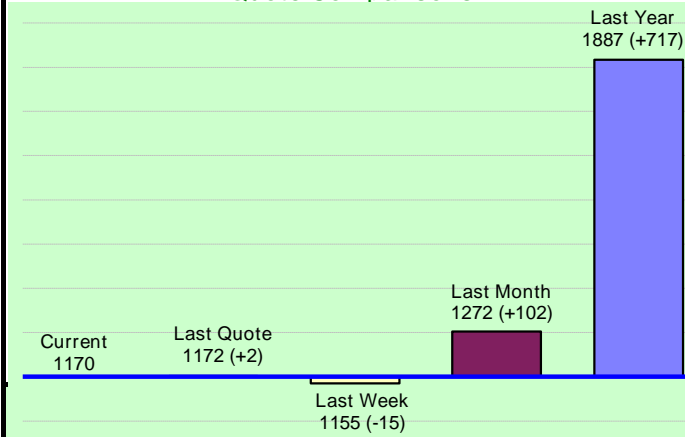
Centre	Bales Originally	Bales Offered	Bales Sold	Pass in Rate
Northern	5,337	5,429	5,216	3.9%
Southern	14,968	9,270	8,430	9.1%
Western	5,700	4,129	3,697	10.5%
TOTAL	26,005	18,828	17,343	7.9%

28 May 2020

## Nutrien Wool Report

EMI 1170 NMI 1212 SMI 1143 WMI 1239

Average Nth-Sth MPG's as reported on 27 May 2020

AWEX Weekly Eastern Market Indicator  
Quote Comparisons

## AUD vs USD from 06-Jul-04 to 27-May-20



Micron	EMI	16.5	17	17.5	18	18.5	19	19.5	20	21	22	23	25	28	AUD
Current MPG's	1170	1743	1620	1543	1495	1439	1373	1330	1305	1299	-	-	-	596	0.664
10 year Average	1298	1870	1776	1716	1655	1590	1527	1474	1429	1399	1358	1280	1144	726	0.854
This time last year	1887	2373	2348	2337	2322	2268	2220	2210	2206	2214	2181	-	-	1124	0.693
10 year High	2116	3187	3007	2831	2683	2569	2462	2414	2391	2371	2350	2308	2153	1323	1.090
10 year Low	847	1265	1172	1150	1118	1072	1015	945	894	870	835	808	760	432	0.557
% Reported above current	58%	47%	47%	51%	53%	55%	57%	58%	56%	53%	0%	0%	0%	82%	98%
Diff b/w High & Current	946	1444	1387	1288	1188	1130	1089	1084	1086	1072	-	-	-	727	0.426
Diff b/w Ave & Current	-128	-127	-156	-173	-160	-151	-154	-144	-124	-100	-	-	-	-130	-0.190

## Percentile Bands

95%	1956	2978	2758	2573	2432	2351	2295	2274	2258	2238	2221	2153	1506	1020	1.050
90%	1827	2618	2532	2462	2353	2237	2151	2073	2052	2048	2024	1697	1265	939	1.040
80%	1550	2490	2363	2232	2123	1997	1856	1774	1710	1650	1517	1395	1177	853	1.005
75%	1508	2319	2238	2158	2053	1885	1785	1711	1616	1525	1444	1360	1141	830	0.979
60%	1290	1806	1662	1668	1595	1544	1509	1467	1405	1376	1334	1272	1025	756	0.907
50%	1234	1578	1536	1550	1512	1470	1424	1386	1345	1316	1268	1214	948	688	0.826
40%	1147	1520	1445	1458	1430	1396	1334	1300	1261	1243	1213	1163	916	667	0.771
25%	1053	1419	1332	1310	1280	1252	1212	1182	1165	1155	1136	1105	884	627	0.742
10%	940	1328	1259	1223	1184	1148	1111	1074	1014	989	948	915	716	484	0.701

## Indicative Basis Contract Prices

Date	MPG	17	17.5	18	18.5	19	19.5	20	21	22	23	28
Jun-2020		1505	1500	1470	1450	1320	1300	1280	1270	1240	1170	550
Jul-2020		1485	1480	1450	1430	1320	1300	1280	1270	1240	1170	550
Aug-2020		1445	1440	1410	1390	1310	1290	1275	1265	1235	1165	550
Sep-2020		1420	1415	1385	1365	1315	1295	1275	1265	1235	1165	550
Oct-2020		1400	1395	1365	1345	1315	1295	1265	1255	1225	1155	550
Nov-2020		1365	1360	1330	1310	1300	1280	1265	1255	1225	1155	550
Dec-2020		1365	1360	1330	1310	1300	1280	1260	1250	1220	1150	540
Jan-2021		1365	1360	1330	1310	1300	1280	1260	1250	1220	1150	530
Feb-2021		1345	1340	1310	1290	1280	1260	1240	1230	1200	1130	520
Mar-2021		1325	1320	1290	1270	1260	1240	1250	1240	1210	1140	510
Apr-2021		1315	1310	1280	1260	1250	1230	1210	1200	1170	1100	500
May-2021		1305	1300	1270	1250	1240	1220	1190	1180	1150	1080	490
Jun-2021		1295	1290	1260	1240	1230	1210	1180	1170	1140	1070	480
Jul-2021		1285	1280	1250	1230	1220	1200	1170	1160	1130	1060	470
Aug-2021		1275	1270	1240	1220	1210	1190	1160	1150	1120	1050	460

## Mulesing Status P/D's

µm	Non Mulsed	Pain Relief
18	+42	+2
19	+40	0
20	+30	0
21	0	0
23	0	0
25	+12	0

All prices on this sheet are listed in c/kg clean. MPG's are average North/South AWEX quoted figures. Mulesing P/D's quoted by AWEX. Basis Contract prices are published purely as a guide.

Please use above figures as a guide to submit your GTC or Target orders. Call 1800 629 396.