

Wool Weekly



Thursday, 12 November 2020

WOOL MARKET MOVEMENTS

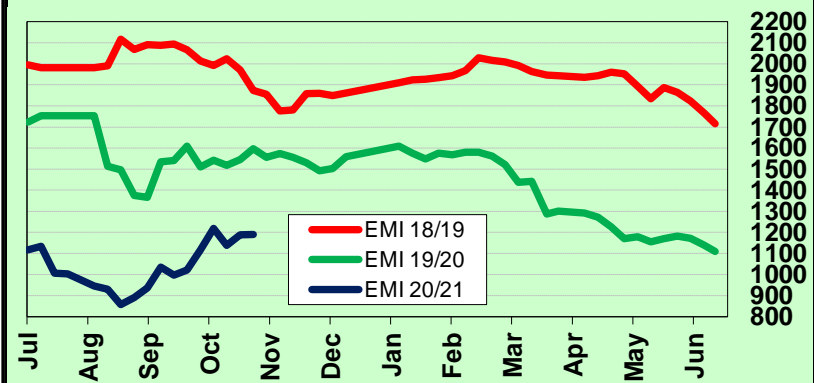
- Another up and down week for the Australian wool market. Prices eased at all three centres on Tuesday before regaining most of the lost ground on Wednesday, producing a 1 cent weekly EMI rise to 1,189 c/kg clean. The national offering was up 4,264 bales to 37,512 bales and the national pass in rate increased to 11.5%, due to seller resistance to Tuesday's price falls. The national offering increases to 40,539 bales next week.
- Price falls (17 to 49 cents) in all Merino fleece MPGs on Tuesday were followed by prices rises (50 to 61 cents) on Wednesday. The net result being positive weekly price movements across all MPGs with the greatest gains at the fine end (<18.0 µm). The Merino skirtings sector followed the fleece market down and then up with well measured, low VM (<2%) lots keenly sought by buyers. The crossbred and oddment sectors dipped on Tuesday with neither able to recover lost ground on Wednesday. The Northern Regional Indicator gained 7 cents to 1,252 c/kg clean as the Northern Merino Carding Indicator lost 33 cents to 731 c/kg clean. The Sydney pass in rate was 12.6% with 299 bales withdrawn.
- The Melbourne Merino fleece market moved in line with Sydney, losing ground on Tuesday before strengthening on Wednesday. Only 4 MPGs finished the week in positive territory with the 17.0 and 17.5 µm MPGs up 28 and 44 cents respectively and the 19.0 and 21.0 MPGs both up 17 cents. Lots with staple length >110 mm tended to be left on the shelf. Wednesday's Merino skirting market recovered Tuesday's losses as buyers chased best style lots carrying low (<2%) VM. Finer crossbred lots fell up to 40 cents on Tuesday, before well-prepared lines gained 15 cents. The oddment sector regained Tuesday's losses on Wednesday, closing unchanged from last week. The Southern Regional Indicator lost 4 cents to 1,149 c/kg clean as the Southern Merino Carding Indicator rose 7 cents to 781 c/kg clean. The Melbourne pass in rate was 12.7% with 2,285 bales withdrawn.
- Minimal price movements among the Merino fleece MPGs on Tuesday in Fremantle, before prices for all MPGs bounded upwards (by 35 to 46 cents) on Wednesday. The finer MPGs enjoyed the largest gains. Despite a low supply of Merino skirtings on Tuesday prices dipped by up to 10 cents, before demand lifted on Wednesday pushing prices up by 10 to 20 cents. The oddment sector was weak with all categories losing ground on both sale days. The Western Regional Indicator rose 24 cents to 1,241 c/kg clean as the Western Merino Carding Indicator lost 27 cents to 776c/kg clean. The Fremantle pass in rate was 8.0% with 2,162 bales withdrawn.

AWEX WEEKLY WOOL PRICES

Regional Indicator	North	Wkly Chg	South	Wkly Chg	West	Wkly Chg
c/kg clean	1252	+7	1149	-4	1241	+24

MICRON PRICE GUIDES						
16.5	1974	+35	1944n	-18	-	-
17	1845	+37	1838n	+28	-	-
17.5	1745	+41	1741	+44	-	-
18	1605	+27	1570	-9	1592n	+45
18.5	1488	+1	1461	-13	1494n	+36
19	1413	+20	1391	+17	1412	+46
19.5	1346	+23	1333	-8	1351	+51
20	1278	+19	1259	-11	1274	+43
21	1226n	+18	1225	+17	1227n	+31
22	-	-	1174n	-	-	-
23	-	-	-	-	-	-
24	-	-	-	-	-	-
25	-	-	-	-	-	-
26	838n	0	840n	-	-	-
28	600n	-15	613	-10	-	-
30	-	-	464	-19	-	-
32	-	-	300n	+15	-	-
MC	731n	-33	781n	+7	776n	-27

AWEX EMI 2018/19 & 2019/20 Seasons vs Current
Currently: 1189 c/kg clean



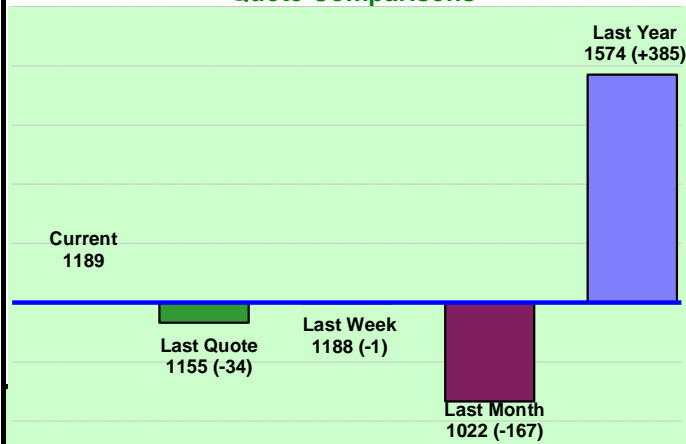
UPCOMING AUCTION VOLUMES

	17/11/2020	24/11/2020	1/12/2020
Northern	S21	S22	S23
Sydney	9,161	7,770	8,935
Southern	M21	M22	M23
Melbourne	23,446	20,470	19,066
Western	F21	F22	F23
Fremantle	7,932	7,100	7,300
Total	40,539	35,340	35,301

THIS WEEK'S SALES STATISTICS

Centre	Bales Originally	Bales Offered	Bales Sold	Pass in Rate
Northern	9,430	9,091	7,943	12.6%
Southern	17,145	19,377	16,919	12.7%
Western	6,450	9,044	8,318	8.0%
TOTAL	33,025	37,512	33,180	11.5%

AWEX Weekly Eastern Market Indicator Quote Comparisons



AUD vs USD from 06-Jul-04 to 11-Nov-20



Micron	EMI	16.5	17	17.5	18	18.5	19	19.5	20	21	22	23	25	28	AUD
Current MPG's	1189	1959	1842	1743	1588	1475	1402	1340	1269	1226	1174	-	-	607	0.731
10 year Average	1354	1860	1791	1742	1687	1631	1576	1534	1498	1470	1438	1372	1223	1091	0.804
This time last year	1574	2072	2006	1951	1907	1866	1815	1787	1768	1751	-	-	-	914	0.680
10 year High	2116	3187	3007	2831	2683	2569	2462	2414	2391	2371	2350	2308	2153	1828	1.058
10 year Low	858	1267	1216	1177	1140	1060	997	947	905	884	863	953	941	402	0.557
% Reported above current	59%	36%	38%	39%	42%	50%	52%	57%	61%	66%	71%	0%	0%	88%	68%
Diff b/w High & Current	927	1228	1165	1088	1095	1094	1060	1074	1123	1146	1176	-	-	1222	0.327
Diff b/w Ave & Current	-165	99	51	1	-100	-157	-174	-195	-230	-244	-264	-	-	-484	-0.073

Percentile Bands

95%	1959	2982	2760	2576	2437	2353	2298	2275	2260	2240	2223	2168	1831	1529	1.050
90%	1833	2609	2521	2472	2358	2242	2156	2081	2068	2060	2088	1801	1383	1280	1.040
80%	1558	2463	2345	2241	2132	2010	1870	1780	1727	1672	1554	1428	1249	1182	1.010
75%	1516	2311	2228	2167	2069	1894	1793	1720	1626	1537	1460	1369	1166	1146	0.985
60%	1296	1919	1768	1692	1625	1576	1527	1472	1412	1384	1357	1296	1154	1053	0.895
50%	1241	1742	1622	1566	1528	1481	1436	1397	1351	1321	1285	1232	1123	982	0.785
40%	1175	1575	1523	1496	1461	1426	1372	1334	1280	1262	1225	1186	1093	931	0.763
25%	1081	1482	1390	1348	1311	1279	1249	1206	1184	1167	1150	1126	1053	897	0.728
10%	1011	1360	1288	1262	1218	1185	1157	1128	1097	1089	1070	1046	978	850	0.695

Indicative Basis Contract Prices

Date	MPG	17	17.5	18	18.5	19	19.5	20	21	22	23	28
Nov-2020		1570	1500	1450	1400	1370	1350	1210	1200	1150	1100	455
Dec-2020		1570	1500	1450	1400	1370	1350	1210	1200	1150	1100	455
Jan-2021		1700	1630	1580	1360	1330	1310	1170	1160	1110	1060	455
Feb-2021		1570	1500	1450	1360	1330	1310	1170	1160	1110	1060	455
Mar-2021		1570	1500	1450	1230	1200	1180	1045	1035	985	935	425
Apr-2021		1570	1500	1450	1225	1195	1175	1045	1035	985	935	400
May-2021		1570	1500	1450	1220	1190	1170	1040	1030	980	930	400
Jun-2021		1570	1500	1450	1220	1190	1170	1040	1030	980	930	390
Jul-2021		1430	1360	1310	1190	1160	1140	1010	1000	950	900	380
Aug-2021		1325	1255	1205	1085	1055	1035	1005	995	945	895	370
Sep-2021		1305	1235	1185	1065	1035	1015	985	975	925	875	360
Oct-2021		1295	1225	1175	1055	1025	1005	975	965	915	865	350
Nov-2021		1285	1215	1165	1045	1015	995	965	955	905	855	340
Dec-2021		1275	1205	1155	1035	1005	985	955	945	895	845	330
Jan-2022		1265	1195	1145	1025	995	975	945	935	885	835	320

Mulesing Status P/D's

µm	Non Mulsed	Pain Relief
18	+42	+2
19	+40	0
20	+30	0
21	0	0
23	0	0
25	+12	0

All prices on this sheet are listed in c/kg clean. MPG's are average North/South AWEX quoted figures. Mulesing P/D's quoted by AWEX. Basis Contract prices are published purely as a guide.

Please use above figures as a guide to submit your GTC or Target orders. Call 1800 629 396.