

Wool Weekly



Thursday, 10 December 2020

WOOL MARKET MOVEMENTS

- This week's market, the second last before the three-week Christmas recess, produced strong upward price movements across all MPGS at three selling centres as buyers sought to secure quantity to fill orders for December shipment. The Western Merino Carding Indicator was the only one to finish the week in negative territory. The EMI closed at 1,198 c/kg clean, up 54 cents. High clearance rates were evident at all three centres, reducing the national pass in rate to 5%. The national offering rises to 49,126 bales next week as growers offer their wool in the last sale prior to Christmas.
- Demand strengthened in Sydney this week as all Merino fleece MPGs enjoyed price rises on both sale days. Prices gains of between 22 to 35 cents on Tuesday and a further 30 to 42 cents on Wednesday were the result of strong buyer demand for all types and descriptions. The Merino skirtings market jumped with fine (<17.5 µm) lots with low VM (< 1.5 - 2%) attracting stiff competition. The crossbred sector gained 20 to 35 cents for the week with finer (<17.5 µm) oddments categories also in favour gaining 40 to 60 cents. The Northern Regional Indicator rose 49 cents to 1,257 c/kg clean with the Northern Merino Carding Indicator up 25 cents to 765 c/kg clean. The Sydney pass in rate was 3.7% with 612 bales withdrawn.
- The Melbourne market also performed strongly this week as buyers paid premiums for lots declared as Non Mulsed as well as those assessed as MF4 or with low CVH. Finer lots were also in favour, as the 16.5 µm MPG gained 142 cents for the week and the 17.0 µm MPG rose 114 cents. Stylish, fine (<18.0 µm) Merino skirtings gained upwards of 80 cents for the week. Poorly prepared lines continue to dampen demand in the crossbred sector as discounts applied to these lots negated premiums paid for those lots with best style. The oddment sector enjoyed strong price gains, particularly for finer (<17.5 µm) lots. The Southern Regional Indicator jumped 57 cents to 1,161 c/kg clean with the Southern Merino Carding Indicator up 32 cents to 763 c/kg clean. The Melbourne pass in rate was 5.6% with 1,130 bales withdrawn.
- The Fremantle market mirrored the performance of the eastern markets with the Merino fleece MPGs up by 46 to 50 cents for the week. Finer (<18.0 µm) Merino skirtings were in favour, lifting upwards of 80 to 100 cents. The oddment sector was more subdued, remaining largely unchanged from last week. The Western Regional Indicator rose 46 cents to 1,244 c/kg clean as the Western Merino Carding Indicator closed at 755 c/kg clean, down 2 cents. The Fremantle pass in rate was 4.9% with just 163 bales withdrawn.

THIS WEEK'S SALES STATISTICS

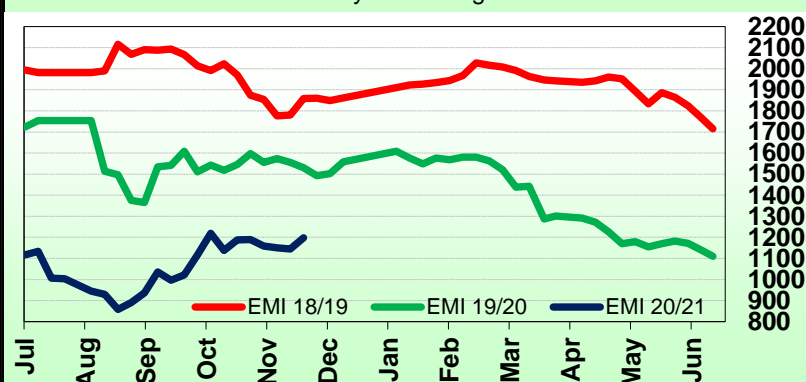
Centre	Bales Originally	Bales Offered	Bales Sold	Pass in Rate
Northern	9,500	9,256	8,918	3.7%
Southern	22,305	21,029	19,851	5.6%
Western	7,250	7,551	7,178	4.9%
TOTAL	39,055	37,836	35,947	5.0%

AWEX WEEKLY WOOL PRICES

Regional Indicator	North	Wkly Chg	South	Wkly Chg	West	Wkly Chg
c/kg clean	1257	+49	1161	+57	1244	+46
MICRON PRICE GUIDES						
16.5	2023	+67	2049n	+142	-	-
17	1903	+77	1918	+114	-	-
17.5	1755	+56	1779	+86	-	-
18	1623	+69	1638	+64	1630n	+50
18.5	1522	+62	1534	+76	1511	+55
19	1442	+60	1454	+81	1433	+47
19.5	1367	+64	1379	+76	1373	+47
20	1300	+60	1290	+49	1292	+46
21	1230n	+52	1235	+66	1233n	+59
22	-	-	1164n	+21	-	-
23	-	-	-	-	-	-
24	-	-	-	-	-	-
25	-	-	-	-	-	-
26	740n	+17	759n	-	-	-
28	500n	+20	503	+19	-	-
30	-	-	396	+18	-	-
32	-	-	281n	+37	-	-
MC	765n	+25	763n	+32	755n	-2

AWEX EMI 2018/19 & 2019/20 Seasons vs Current

Currently: 1198 c/kg clean



UPCOMING AUCTION VOLUMES

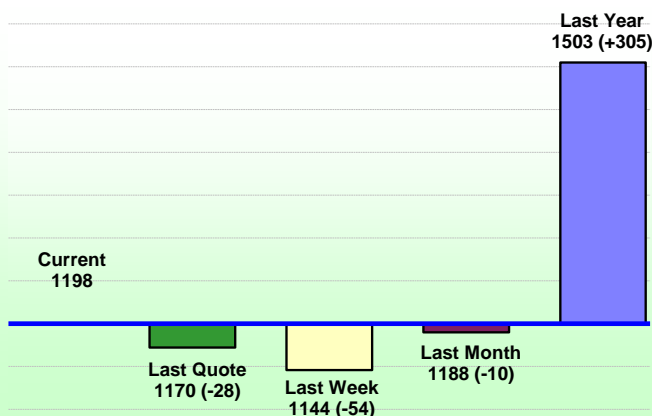
	15/12/2020	22/12/2020	29/12/2020
Northern	S25	S26	S27
Sydney	10,848	RECESS	RECESS
Southern	M25	M26	M27
Melbourne	27,961	RECESS	RECESS
Western	F25	F26	F27
Fremantle	10,317	RECESS	RECESS
Total	49,126	RECESS	RECESS

10 Dec 2020

Nutrien Wool Report

EMI 1198 NMI 1257 SMI 1161 WMI 1244

Average Nth-Sth MPG's as reported on 9 Dec 2020


AWEX Weekly Eastern Market Indicator
Quote Comparisons

AUD vs USD from 06-Jul-04 to 09-Dec-20



Micron	EMI	16.5	17	17.5	18	18.5	19	19.5	20	21	22	23	25	28	AUD
Current MPG's	1198	2036	1911	1767	1631	1528	1448	1373	1295	1233	1164	-	-	502	0.744
10 year Average	1352	1861	1791	1742	1686	1630	1575	1532	1496	1467	1435	1372	1223	1090	0.803
This time last year	1503	2003	1938	1874	1815	1751	1725	1711	1710	1707	-	-	-	847	0.689
10 year High	2116	3187	3007	2831	2683	2569	2462	2414	2391	2371	2350	2308	2153	1828	1.058
10 year Low	858	1267	1216	1177	1140	1060	997	947	905	884	863	953	941	402	0.557
% Reported above current	58%	33%	36%	38%	40%	43%	49%	52%	58%	64%	72%	0%	0%	98%	61%
Diff b/w High & Current	918	1151	1096	1064	1052	1041	1014	1041	1096	1139	1186	-	-	1327	0.314
Diff b/w Ave & Current	-154	175	119	25	-56	-102	-127	-159	-201	-235	-271	-	-	-589	-0.059

Percentile Bands

95%	1959	2981	2760	2575	2435	2352	2298	2275	2259	2239	2223	2167	1831	1529	1.050
90%	1833	2607	2519	2470	2356	2241	2155	2078	2065	2053	2083	1801	1383	1280	1.040
80%	1556	2462	2344	2241	2130	2004	1868	1779	1725	1665	1549	1428	1248	1182	1.010
75%	1513	2302	2227	2166	2066	1891	1791	1715	1622	1535	1458	1368	1165	1146	0.984
60%	1294	1933	1772	1700	1623	1570	1520	1471	1410	1383	1351	1296	1154	1052	0.894
50%	1241	1757	1625	1568	1529	1480	1431	1395	1349	1320	1284	1232	1123	975	0.783
40%	1172	1576	1527	1498	1464	1427	1373	1330	1276	1259	1224	1186	1093	931	0.763
25%	1083	1483	1391	1349	1312	1282	1252	1207	1185	1167	1149	1125	1052	897	0.728
10%	1011	1360	1289	1262	1218	1185	1157	1129	1097	1090	1071	1046	977	850	0.695

Indicative Basis Contract Prices

Date	MPG	17	17.5	18	18.5	19	19.5	20	21	22	23	28
Dec-2020		1790	1680	1600	1480	1400	1350	1220	1200	1130	1100	425
Jan-2021		1790	1680	1600	1480	1400	1350	1220	1200	1130	1100	425
Feb-2021		1790	1680	1600	1480	1400	1350	1220	1200	1130	1100	425
Mar-2021		1810	1680	1600	1480	1400	1350	1220	1200	1130	1100	425
Apr-2021		1780	1670	1590	1470	1390	1340	1210	1190	1120	1090	400
May-2021		1780	1670	1590	1470	1390	1340	1210	1190	1120	1090	400
Jun-2021		1770	1660	1580	1460	1380	1330	1200	1180	1110	1080	390
Jul-2021		1760	1650	1570	1450	1370	1320	1190	1170	1100	1070	380
Aug-2021		1750	1640	1560	1440	1360	1310	1180	1160	1090	1060	370
Sep-2021		1740	1630	1550	1430	1350	1300	1170	1150	1080	1050	360
Oct-2021		1730	1620	1540	1420	1340	1290	1160	1140	1070	1040	350
Nov-2021		1720	1610	1530	1410	1330	1280	1150	1130	1060	1030	340
Dec-2021		1710	1600	1520	1400	1320	1270	1140	1120	1050	1020	330
Jan-2022		1690	1580	1500	1380	1300	1250	1120	1100	1030	1000	320
Feb-2022		1670	1560	1480	1360	1280	1230	1100	1080	1010	980	310

Mulesing Status P/D's

µm	Non Mulsed	Pain Relief
18	+42	+2
19	+40	0
20	+30	0
21	0	0
23	0	0
25	+12	0

All prices on this sheet are listed in c/kg clean. MPG's are average North/South AWEX quoted figures. Mulesing P/D's quoted by AWEX. Basis Contract prices are published purely as a guide.

Please use above figures as a guide to submit your GTC or Target orders. Call 1800 629 396.