

# Wool Weekly



Friday, 22 January 2021

## WOOL MARKET MOVEMENTS

- Finer MPGs were keenly sought this week, as buyers competed for quantity in a smaller national offering (down 8,036 bales). Prices strengthened as the sale progressed with the last day of the Melbourne sale producing the greatest gains. The carding sectors also made solid gains. The EMI rose 30 cents to 1,202 c/kg clean with 7.6% passed in.
- The Sydney market continued last week's trend, strong demand for finer types produced weekly price gains of 77, 105 and 106 cents for the 17.5, 17.0 and 16.5 MPGs respectively. The medium Merino MPGs ended the week lower, down up to 17 cents. Merino skirtings mirrored the fleece sector, finer types (<18.0 µm) gained 60 to 90 cents and broader types 20-40 cents. Poorly prepared crossbred lots dampened demand and fuelled high pass in rates. The oddment sector strengthened as the week progressed with crutchings, locks & stains gaining up to 50 cents. The Northern Regional Indicator closed at 1,257 c/kg clean up 24 cents and the Northern Merino Carding Indicator rose 29 cents to 818 c/kg clean. The Sydney pass in rate was 7.8% with 799 bales withdrawn.
- Finer fleece lots (<17.5 µm) were also keenly sought in Melbourne especially on day 1 and 3 generating weekly price gains upwards of 118 cents. Stylish, well measured wools were keenly sought, lots with low CVH and those declared Non Mulsed attracted premiums on day 3. Merino skirtings recorded solid gains as finer lots rose up to 90 cents for the week. The crossbred sector was sluggish on day 1 but strengthened as the sales progressed with a 90% clearance rate on day 3. The oddment sector was mixed, Merino cardings were in favour on day 1 up 15 cents, the focus shifted to Merino Lambs on day 2 (up 60 cents) and to finer (<17.5 µm) Locks & Lambs on day 3 (up 30 cents). The Southern Regional Indicator jumped 33 cents to 1,167 c/kg clean and the Southern Merino Carding Indicator surged 56 cents to 871 c/kg clean. The Melbourne pass in rate was 6.1% with 1,672 bales withdrawn.
- The Merino fleece market had mixed results in Fremantle on Tuesday, only the 18 µm MPG recorded a positive price movement (up 11 cents). Demand strengthened on Wednesday and produced high clearance rates, although broader types (19.5 - 21 µm) lost ground, down 8 to 24 cents for the week. Merino skirtings trended dearer with finer (<17.5 µm) types leading the way. The oddment sector had mixed results on Tuesday before gaining ground on Wednesday. The Western Regional Indicator lost 3 cents to 1,219 c/kg clean while the Western Merino Carding Indicator lifted 39 cents to 868 c/kg clean. The Fremantle pass in rate was 11.4% with 617 bales withdrawn.

## AWEX WEEKLY WOOL PRICES

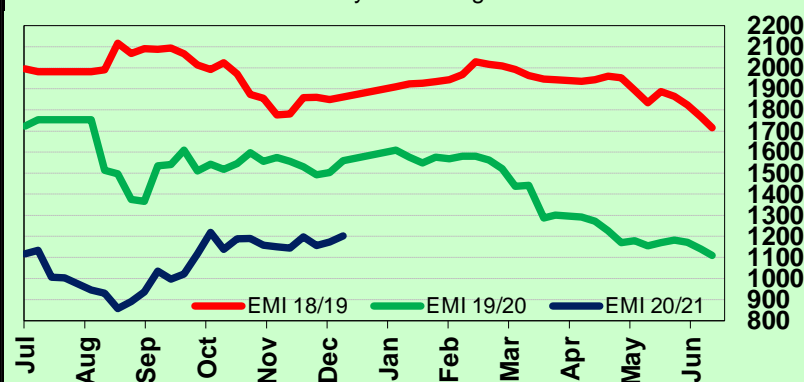
Regional Indicator	North	Wkly Chg	South	Wkly Chg	West	Wkly Chg
c/kg clean	1257	+24	1167	+33	1219	-3

MICRON PRICE GUIDES						
16.5	2175	+106	2224n	+156	-	-
17	2012	+105	2038	+128	-	-
17.5	1855	+77	1896	+118	-	-
18	1651	+59	1693	+66	1654n	+27
18.5	1510	+36	1561	+67	1519	+23
19	1396	+7	1428	+38	1398	+2
19.5	1316	-3	1357	+31	1311	-8
20	1230	-16	1266	+21	1225	-24
21	1163n	-17	1169n	+7	1160n	-13
22	-	-	1128n	-20	-	-
23	-	-	-	-	-	-
24	-	-	-	-	-	-
25	-	-	-	-	-	-
26	715n	-6	720	-8	-	-
28	461n	+1	483	+12	-	-
30	-	-	375	+1	-	-
32	-	-	255n	+4	-	-
MC	818n	+29	871n	+56	868n	+39

## AWEX EMI 2018/19 & 2019/20 Seasons vs Current

Currently: 1202 c/kg clean



## UPCOMING AUCTION VOLUMES

	27/01/2021	3/02/2021	10/02/2021
Northern	S31	S32	S33
Sydney	10,939	10,720	9,850
Southern	M31	M32	M33
Melbourne	23,699	22,726	28,285
Western	F31	F32	F33
Fremantle	8,480	7,750	6,600
Total	43,118	41,196	44,735

## THIS WEEK'S SALES STATISTICS

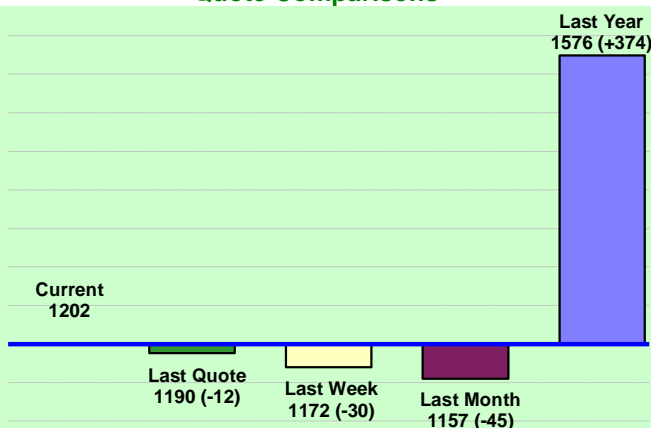
Centre	Bales Originally	Bales Offered	Bales Sold	Pass in Rate
Northern	10,590	11,734	10,814	7.8%
Southern	24,785	23,861	22,394	6.1%
Western	7,650	8,659	7,675	11.4%
TOTAL	43,025	44,254	40,883	7.6%

22 Jan 2021

## Nutrien Wool Report

EMI 1202 NMI 1257 SMI 1167 WMI 1219

Average Nth-Sth MPG's as reported on 21 Jan 2021

AWEX Weekly Eastern Market Indicator  
Quote Comparisons

## AUD vs USD from 06-Jul-04 to 21-Jan-21



Micron	EMI	16.5	17	17.5	18	18.5	19	19.5	20	21	22	23	25	28	AUD
Current MPG's	1202	2224	2038	1896	1693	1561	1428	1357	1266	1169	1128	-	-	483	0.777
10 year Average	1351	1863	1793	1742	1686	1628	1573	1530	1494	1464	1432	1372	1223	1090	0.803
This time last year	1576	2163	2078	2012	1920	1882	1806	1787	1777	1762	-	-	-	837	0.686
10 year High	2116	3187	3007	2831	2683	2569	2462	2414	2391	2371	2350	2308	2153	1828	1.058
10 year Low	858	1267	1216	1177	1140	1060	997	947	905	884	863	953	941	402	0.557
% Reported above current	57%	25%	30%	35%	39%	41%	49%	54%	61%	75%	84%	0%	0%	98%	40%
Diff b/w High & Current	914	963	969	935	990	1008	1034	1057	1125	1202	1222	-	-	1345	0.281
Diff b/w Ave & Current	-149	361	245	154	7	-67	-145	-173	-228	-295	-304	-	-	-607	-0.026

## Percentile Bands

95%	1958	2980	2759	2574	2434	2352	2297	2274	2259	2239	2223	2167	1831	1529	1.050
90%	1832	2607	2518	2468	2355	2240	2154	2077	2062	2053	2072	1801	1383	1280	1.040
80%	1556	2459	2343	2239	2129	2002	1863	1777	1717	1658	1539	1428	1248	1182	1.010
75%	1512	2293	2221	2164	2059	1886	1788	1713	1621	1533	1454	1368	1165	1146	0.983
60%	1292	1941	1778	1718	1623	1566	1518	1469	1408	1381	1348	1296	1154	1052	0.892
50%	1239	1766	1635	1574	1532	1481	1429	1394	1348	1319	1281	1232	1123	969	0.782
40%	1172	1578	1529	1500	1466	1428	1376	1326	1273	1255	1221	1186	1093	931	0.763
25%	1084	1484	1393	1349	1313	1282	1254	1209	1187	1167	1149	1125	1052	897	0.729
10%	1011	1361	1291	1262	1219	1185	1157	1129	1097	1093	1071	1046	977	849	0.696

## Indicative Basis Contract Prices

Date	MPG	17	17.5	18	18.5	19	19.5	20	21	22	23	28
Jan-2021		1830	1710	1630	1500	1400	1350	1190	1170	1140	1070	470
Feb-2021		1830	1710	1630	1500	1400	1350	1190	1170	1140	1070	470
Mar-2021		1830	1710	1630	1500	1400	1350	1190	1170	1140	1070	470
Apr-2021		1830	1710	1630	1500	1400	1350	1190	1170	1140	1070	470
May-2021		1830	1710	1630	1500	1400	1350	1190	1170	1140	1070	470
Jun-2021		1830	1710	1630	1500	1400	1350	1190	1170	1140	1070	470
Jul-2021		1810	1690	1610	1480	1400	1350	1190	1170	1140	1070	470
Aug-2021		1780	1660	1580	1480	1400	1350	1190	1170	1140	1070	460
Sep-2021		1770	1650	1570	1480	1400	1350	1190	1170	1140	1070	450
Oct-2021		1760	1640	1560	1480	1400	1350	1190	1170	1140	1070	440
Nov-2021		1750	1630	1550	1480	1400	1350	1190	1170	1140	1070	430
Dec-2021		1740	1620	1540	1480	1400	1350	1190	1170	1140	1070	420
Jan-2022		1730	1610	1530	1480	1400	1350	1190	1170	1140	1070	410
Feb-2022		1720	1600	1520	1480	1400	1350	1190	1170	1140	1070	400
Mar-2022		1710	1590	1510	1480	1400	1350	1190	1170	1140	1070	390

## Mulesing Status P/D's

µm	Non Mulsed	Pain Relief
18	+42	+2
19	+40	0
20	+30	0
21	0	0
23	0	0
25	+12	0

All prices on this sheet are listed in c/kg clean. MPG's are average North/South AWEX quoted figures. Mulesing P/D's quoted by AWEX. Basis Contract prices are published purely as a guide.

Please use above figures as a guide to submit your GTC or Target orders. Call 1800 629 396.