

Wool Weekly



Friday, 29 January 2021

WOOL MARKET MOVEMENTS

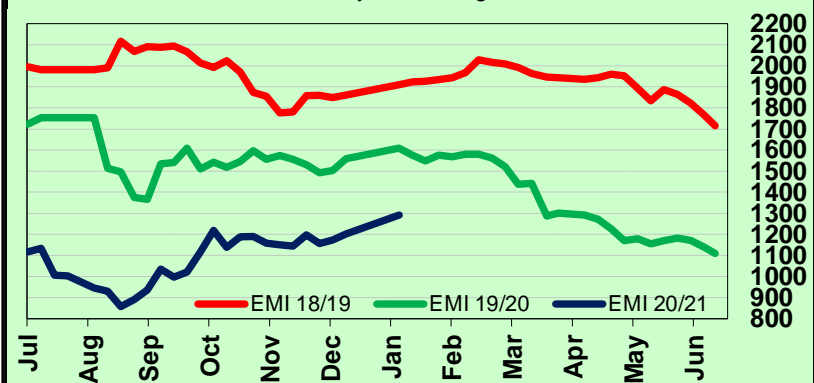
- The Australian wool market continued its upward trend this week opening higher on Wednesday and continued to rise as the day progressed. Thursday produced more modest price rises. All market sectors lifted, pushing the EMI up 89 cents to close at 1,291 c/kg clean. The national offering was about 10% smaller compared to last week, 39,841 bales, with 5.8% passed in.
- Wednesday's Sydney sale produced price gains in excess of 100 cents for each Merino fleece MPG. The finer end (<19.0 µm) gained between 122 and 138 cents. The 16.5 and 17 µm MPGs maintained their ground on Thursday as broader MPGs added up to 15 cents. Finer (<18.5 µm), well measured, low VM (<2.5% VM) Merino skirtings jumped 130 cents on Wednesday and attracted further premiums on Thursday, as the skirtings sector rose a further 10 to 20 cents. Crossbreds gained 10 to 20 cents on Wednesday, with finer (<26.5 µm) MPGs adding up to 60 cents and broader types up to 50 cents on Thursday. The oddment sector surged on Wednesday, again led by the finer end of the micron range and recorded additional modest rises on Thursday. The Northern Regional Indicator jumped 112 cents to 1,369c/kg clean and the Northern Merino Carding Indicator rose 88 cents to 906 c/kg clean. the Sydney pass in rate was 4.7% with 428 bales withdrawn.
- The Melbourne market opened strongly and strengthened as Wednesday's sale progressed. The 19 µm MPG rose 101 cents, other MPGs gained 76 to 98 cents. Merino fleece lots assessed as MF3 and MF4 were keenly sought on Thursday, with modest price gains (up to 8 cents) for other types and descriptions. Well measured Merino skirtings with low VM attracted strong competition, recording solid price gains on both days. The crossbred sector gained ground on the back of strong demand for lots <27.0 µm. Merino lambs were in favour with stylish fine lots gaining upwards of 200 cents. The Southern Regional Indicator climbed 74 cents to 1,241 c/kg clean and Southern Merino Carding Indicator rose 40 cents to 911 c/kg clean. The Melbourne pass in rate was 6.2% with 1,160 bales withdrawn.
- Price gains in excess of 100 cents occurred across all Merino fleece MPGs in Fremantle on Wednesday, before losing some ground on Thursday. Finer lots (<19.5 µm) were least affected. Merino skirtings rose on Wednesday and maintained their level on Thursday. The oddment market strengthened on Wednesday with locks adding up to 20 cents on Thursday. The Western Regional Indicator closed at 1,292 c/kg clean, up 73 cents with the Western Merino Carding Indicator up 84 cents to 952 c/kg clean. The Fremantle pass in rate was 6.1% with 279 bales withdrawn.

AWEX WEEKLY WOOL PRICES

Regional Indicator	North	Wkly Chg	South	Wkly Chg	West	Wkly Chg
c/kg clean	1369	+112	1241	+74	1292	+73
MICRON PRICE GUIDES						
16.5	2313	+138	2310n	+86	-	-
17	2144	+132	2118	+80	-	-
17.5	1975	+120	1978	+82	-	-
18	1780	+129	1781	+88	1765n	+111
18.5	1655	+145	1646	+85	1625	+106
19	1537	+141	1533	+105	1504	+106
19.5	1441	+125	1443	+86	1429	+118
20	1340	+110	1349	+83	1275	+50
21	1273	+110	1267	+98	1182n	+22
22	-	-	1180n	+52	-	-
23	-	-	-	-	-	-
24	-	-	-	-	-	-
25	-	-	-	-	-	-
26	785n	+70	793n	+73	-	-
28	531n	+70	541	+58	-	-
30	-	-	420	+45	-	-
32	-	-	285n	+30	-	-
MC	906n	+88	911n	+40	952n	+84

AWEX EMI 2018/19 & 2019/20 Seasons vs Current

Currently: 1291 c/kg clean



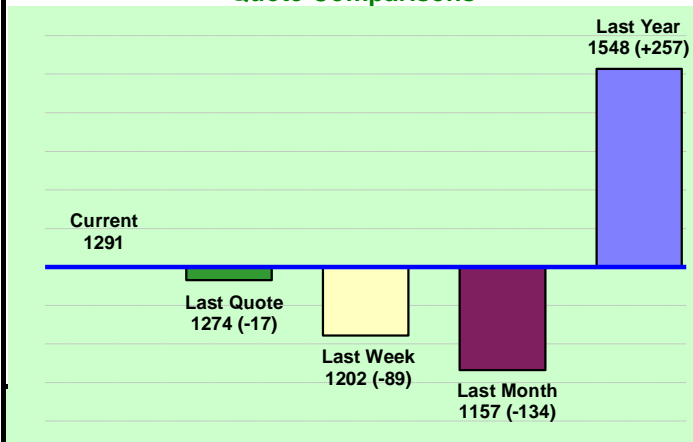
UPCOMING AUCTION VOLUMES

	3/02/2021	10/02/2021	17/02/2021
Northern	S32	S33	S34
Sydney	13,432	9,850	9,840
Southern	M32	M33	M34
Melbourne	24,975	28,285	23,802
Western	F32	F33	F34
Fremantle	8,417	6,600	8,050
Total	46,824	44,735	41,692

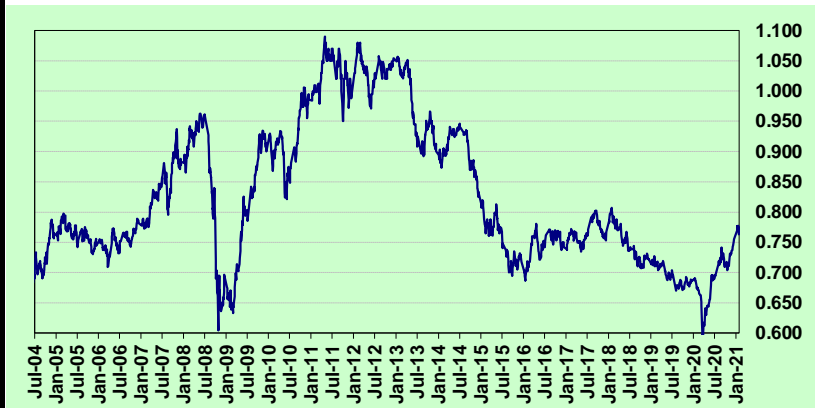
THIS WEEK'S SALES STATISTICS

Centre	Bales Originally	Bales Offered	Bales Sold	Pass in Rate
Northern	10,390	10,244	9,761	4.7%
Southern	23,930	21,053	19,756	6.2%
Western	7,600	8,544	8,025	6.1%
TOTAL	41,920	39,841	37,542	5.8%

AWEX Weekly Eastern Market Indicator Quote Comparisons



AUD vs USD from 06-Jul-04 to 28-Jan-21



Micron	EMI	16.5	17	17.5	18	18.5	19	19.5	20	21	22	23	25	28	AUD
Current MPG's	1291	2312	2131	1977	1781	1651	1535	1442	1345	1270	1180	-	-	536	0.763
10 year Average	1350	1865	1793	1743	1686	1628	1573	1530	1493	1464	1432	1372	1223	1090	0.803
This time last year	1548	2121	2021	1958	1893	1845	1793	1784	1760	1744	-	-	-	804	0.674
10 year High	2116	3187	3007	2831	2683	2569	2462	2414	2391	2371	2350	2308	2153	1828	1.058
10 year Low	858	1267	1216	1177	1140	1060	997	947	905	884	863	953	941	402	0.557
% Reported above current	44%	22%	27%	31%	36%	39%	40%	47%	52%	58%	69%	0%	0%	96%	50%
Diff b/w High & Current	825	876	876	855	902	918	927	972	1047	1101	1170	-	-	1292	0.295
Diff b/w Ave & Current	-59	447	338	234	95	22	-38	-88	-149	-194	-252	-	-	-554	-0.040

Percentile Bands

95%	1958	2979	2759	2574	2434	2351	2296	2274	2259	2239	2223	2167	1831	1529	1.050
90%	1832	2607	2517	2467	2355	2240	2153	2076	2060	2053	2070	1801	1383	1280	1.040
80%	1555	2459	2341	2239	2128	2001	1863	1776	1716	1657	1539	1428	1248	1182	1.010
75%	1512	2298	2220	2163	2058	1886	1788	1713	1621	1532	1454	1368	1165	1146	0.982
60%	1291	1942	1780	1721	1623	1569	1518	1469	1408	1381	1348	1296	1154	1052	0.892
50%	1239	1770	1636	1575	1533	1481	1429	1394	1348	1318	1280	1232	1123	969	0.782
40%	1172	1578	1530	1502	1466	1429	1377	1328	1274	1255	1221	1186	1093	931	0.763
25%	1084	1485	1394	1349	1313	1282	1254	1210	1187	1167	1149	1125	1052	897	0.729
10%	1011	1361	1291	1262	1219	1186	1157	1129	1097	1093	1071	1046	977	849	0.696

Indicative Basis Contract Prices

Date	MPG	17	17.5	18	18.5	19	19.5	20	21	22	23	28
Feb-2021		1960	1840	1760	1620	1520	1470	1290	1250	1220	1150	510
Mar-2021		1960	1840	1760	1620	1520	1470	1290	1250	1220	1150	510
Apr-2021		1960	1840	1760	1620	1520	1470	1290	1250	1220	1150	510
May-2021		1960	1840	1760	1620	1520	1470	1290	1250	1220	1150	510
Jun-2021		1960	1840	1760	1620	1520	1470	1290	1250	1220	1150	510
Jul-2021		1940	1820	1740	1670	1570	1520	1340	1300	1270	1200	500
Aug-2021		1920	1800	1720	1650	1570	1520	1340	1300	1270	1200	490
Sep-2021		1900	1780	1700	1650	1570	1520	1340	1300	1270	1200	480
Oct-2021		1880	1760	1680	1650	1570	1520	1340	1300	1270	1200	470
Nov-2021		1860	1740	1660	1650	1570	1520	1340	1300	1270	1200	460
Dec-2021		1840	1720	1640	1650	1570	1520	1340	1300	1270	1200	450
Jan-2022		1820	1700	1620	1650	1570	1520	1340	1300	1270	1200	440
Feb-2022		1800	1680	1600	1650	1570	1520	1340	1300	1270	1200	430
Mar-2022		1780	1660	1580	1650	1570	1520	1340	1300	1270	1200	420
Apr-2022		1760	1640	1560	1650	1570	1520	1340	1300	1270	1200	410

Mulesing Status P/D's

µm	Non Mulsed	Pain Relief
18	+42	+2
19	+40	0
20	+30	0
21	0	0
23	0	0
25	+12	0

All prices on this sheet are listed in c/kg clean. MPG's are average North/South AWEX quoted figures. Mulesing P/D's quoted by AWEX. Basis Contract prices are published purely as a guide.

Please use above figures as a guide to submit your GTC or Target orders. Call 1800 629 396.