

Wool Weekly



Friday, 26 February 2021

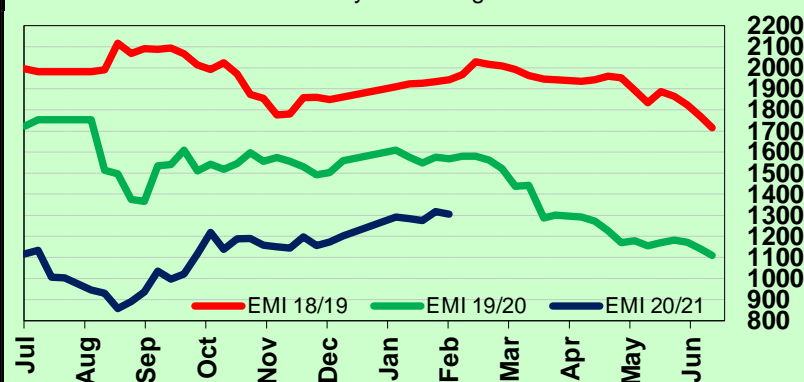
WOOL MARKET MOVEMENTS

- A large national offering (50,138 bales, up 4,089) resulted in a careful market tone with price falls across the Merino fleece sector with finer types most affected. The crossbred sector rose but the carding sector also weakened. The EMI lost 12 cents to 1,306 c/kg clean with 18.4% passed in (up 8.7%) on last week.
- An Australian Superfine sale in Sydney increased availability of $\leq 18.5 \mu\text{m}$ types and prices eased by 15 to 35 cents at the finer end of the range. Although ASF and MF4 lots with favourable additional measurements were keenly sought and maintained their ground. Finer Merino skirtings eased by 20 to 40 cents for as well measured broader types with low VM (<2%) held steady. The crossbred sector eased on Tuesday and rebounded on Wednesday as buyers sought out well prepared lines. The oddment sector was unchanged. The Northern Regional Indicator lost 12 cents to 1,380 c/kg clean and the Northern Merino Carding Indicator lost 7 cents to 859 c/kg clean. The Sydney pass in rate was 15.1% with 555 bales withdrawn.
- A soft Merino fleece market in Melbourne on Tuesday due to higher volumes of poor style and low strength lots. Well measured MF4 lots maintained their value. Wednesday opened softer but recovered as the day progressed with prices falling further on Thursday and 32.6% passed in. Stylish, low VM (<2%) Merino skirtings maintained ground, other types lost 20 to 30 cents on Tuesday before the sector firmed on Wednesday and was unchanged on Thursday, except high VM (>5%) lots which lost 15 cents. The crossbred sector rose as buyers chased finer (<29.0 μm) crossbred lots. The oddment sector was mixed, high VM carding oddments lost ground on Tuesday, stylish fine Merino lambs rose on Wednesday and all descriptions lost 10 to 20 cents on Thursday. The Southern Regional Indicator dropped 12 cents to 1,259 c/kg clean with the Southern Merino Carding Indicator slipping 21 cents to 851 c/kg clean. The Melbourne pass in rate was 14.3% with 1,208 bales withdrawn.
- The Fremantle Merino fleece market lost ground on Tuesday with the MPGs down 10 to 34 cents and 33% of fleece lots passed in. Mixed results on Wednesday with finer types continuing to slide as broader types (>20.5 μm) gained ground on the back of limited supply. Merino skirtings rose by 10 to 20 cents on the back of solid demand for finer (<19.0 μm) lots on Tuesday before weakening on Wednesday. The oddment sector softened on Tuesday and maintained ground on Wednesday. The Western Regional Indicator closed at 1,360 c/kg clean down 12 cents with the Western Merino Carding Indicator down 18 cents to 881 c/kg clean. The Fremantle pass in rate was 32.4% with 679 bales withdrawn.

AWEX WEEKLY WOOL PRICES

Regional Indicator	North	Wkly Chg	South	Wkly Chg	West	Wkly Chg
c/kg clean	1380	-12	1259	-12	1360	-12
MICRON PRICE GUIDES						
16.5	2283	-27	2238n	-50	-	-
17	2125	-20	2098n	-46	-	-
17.5	1968	-20	1974	-41	-	-
18	1840	-11	1833	-45	1843	-65
18.5	1703	-40	1701	-45	1691	-68
19	1611	-14	1599	-40	1605	-45
19.5	1499	-10	1483	-46	1511	-24
20	1397	-5	1400	-19	1394	-22
21	1295	+1	1296	-22	1312	-6
22	-	-	-	-	-	-
23	-	-	-	-	-	-
24	-	-	-	-	-	-
25	-	-	-	-	-	-
26	-	-	781n	+6	-	-
28	523	+8	571	+35	-	-
30	-	-	448	+23	-	-
32	-	-	278n	+4	-	-
MC	859	-7	851n	-21	881	-18

AWEX EMI 2018/ 19 & 2019/ 20 Seasons vs Current
Currently: 1306 c/kg clean



UPCOMING AUCTION VOLUMES

	3/03/2021	10/03/2021	17/03/2021
Northern	S36	S37	S38
Sydney	12,715	9,675	11,040
Southern	M36	M37	M38
Melbourne	27,852	22,190	20,695
Western	F36	F37	F38
Fremantle	9,968	8,050	8,830
Total	50,535	39,915	40,565

THIS WEEK'S SALES STATISTICS

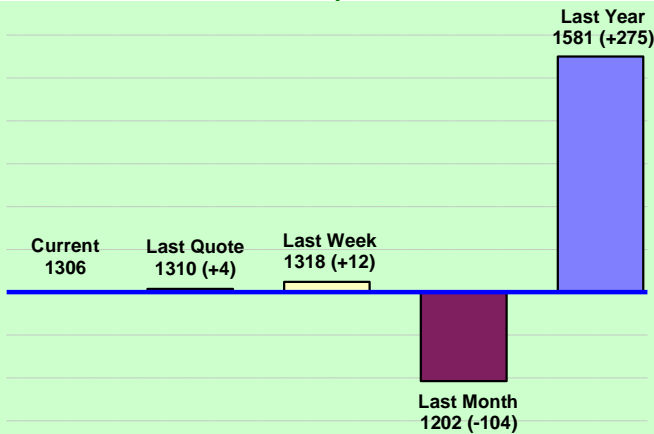
Centre	Bales Originally	Bales Offered	Bales Sold	Pass in Rate
Northern	9,900	13,221	11,227	15.1%
Southern	22,635	26,073	22,355	14.3%
Western	8,070	10,844	7,326	32.4%
TOTAL	40,605	50,138	40,908	18.4%

26 Feb 2021

Nutrien Wool Report

EMI 1306 NMI 1380 SMI 1259 WMI 1360

Average Nth-Sth MPG's as reported on 25 Feb 2021

AWEX Weekly Eastern Market Indicator
Quote Comparisons

AUD vs USD from 06-Jul-04 to 25-Feb-21



Micron	EMI	16.5	17	17.5	18	18.5	19	19.5	20	21	22	23	25	28	AUD
Current MPG's	1306	2238	2098	1974	1833	1701	1599	1483	1400	1296	-	-	-	571	0.796
10 year Average	1350	1870	1797	1746	1688	1629	1573	1530	1492	1461	1430	1372	1223	1090	0.803
This time last year	1581	2166	2080	2013	1954	1880	1844	1824	1805	1789	-	-	-	888	0.665
10 year High	2116	3187	3007	2831	2683	2569	2462	2414	2391	2371	2350	2308	2153	1828	1.058
10 year Low	858	1267	1216	1177	1140	1060	997	947	905	884	863	953	941	402	0.557
% Reported above current	42%	25%	29%	32%	36%	37%	38%	41%	48%	56%	0%	0%	0%	92%	33%
Diff b/w High & Current	810	949	909	857	850	868	863	931	991	1075	-	-	-	1257	0.262
Diff b/w Ave & Current	-44	368	301	228	145	72	26	-47	-92	-165	-	-	-	-519	-0.006

Percentile Bands

95%	1957	2978	2758	2573	2433	2351	2295	2274	2258	2238	2223	2167	1831	1529	1.050
90%	1829	2606	2516	2462	2354	2238	2151	2074	2053	2050	2050	1801	1383	1280	1.040
80%	1551	2458	2335	2234	2125	2000	1862	1774	1712	1652	1525	1428	1248	1182	1.006
75%	1508	2293	2216	2159	2054	1885	1785	1711	1618	1527	1451	1368	1165	1146	0.979
60%	1292	1953	1809	1733	1631	1579	1528	1469	1407	1378	1344	1296	1154	1052	0.887
50%	1241	1773	1643	1580	1537	1483	1435	1396	1348	1317	1277	1232	1123	969	0.782
40%	1174	1579	1536	1509	1470	1432	1379	1334	1277	1255	1220	1186	1093	931	0.763
25%	1085	1487	1397	1351	1317	1287	1255	1213	1189	1168	1149	1125	1052	897	0.731
10%	1013	1362	1292	1262	1219	1187	1158	1129	1100	1093	1071	1046	977	849	0.696

Indicative Basis Contract Prices

Date	MPG	17	17.5	18	18.5	19	19.5	20	21	22	23	28
Feb-2021		1940	1820	1740	1690	1590	1540	1330	1290	1260	1190	520
Mar-2021		1940	1820	1740	1690	1590	1540	1330	1290	1260	1190	520
Apr-2021		1940	1820	1740	1690	1590	1540	1330	1290	1260	1190	520
May-2021		1940	1820	1740	1690	1590	1540	1330	1290	1260	1190	520
Jun-2021		1940	1820	1740	1690	1590	1540	1330	1290	1260	1190	520
Jul-2021		1950	1830	1750	1700	1600	1550	1340	1300	1270	1200	520
Aug-2021		1950	1830	1750	1680	1600	1550	1340	1300	1270	1200	520
Sep-2021		1950	1830	1750	1680	1600	1550	1340	1300	1270	1200	520
Oct-2021		1950	1830	1750	1680	1600	1550	1340	1300	1270	1200	520
Nov-2021		1950	1830	1750	1680	1600	1550	1340	1300	1270	1200	520
Dec-2021		1950	1830	1750	1680	1600	1550	1340	1300	1270	1200	520
Jan-2022		1950	1830	1750	1680	1600	1550	1340	1300	1270	1200	520
Feb-2022		1950	1830	1750	1680	1600	1550	1340	1300	1270	1200	520
Mar-2022		1950	1830	1750	1680	1600	1550	1340	1300	1270	1200	520
Apr-2022		1950	1830	1750	1680	1600	1550	1340	1300	1270	1200	520

Mulesing Status P/D's

µm	Non Mulsed	Pain Relief
18	+42	+2
19	+40	0
20	+30	0
21	0	0
23	0	na
28	0	0

All prices on this sheet are listed in c/kg clean. MPG's are average North/South AWEX quoted figures. Mulesing P/D's quoted by AWEX. Basis Contract prices are published purely as a guide.

Please use above figures as a guide to submit your GTC or Target orders. Call 1800 629 396.