

# Wool Weekly



Thursday, 1 April 2021

## WOOL MARKET MOVEMENTS

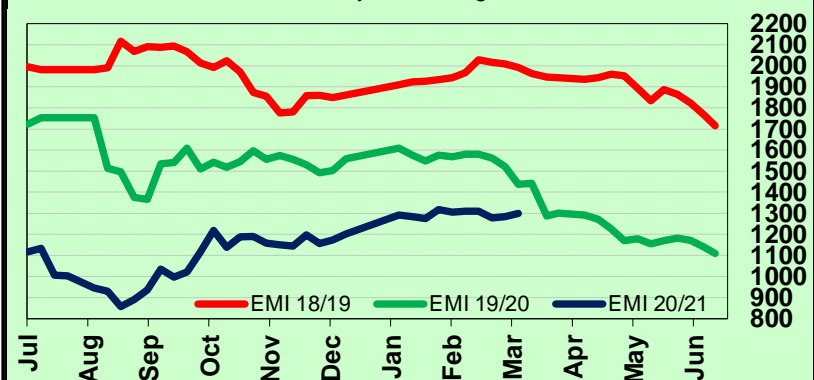
- The EMI rose 15 cents to 1,300 c/kg clean on the back of strong demand for finer (<18.5 µm) types. The Merino fleece and skirtings sector both performed strongly, and crossbred wools made solid gains. The oddments sector was mixed, recording a small weekly gain in Sydney and falls in Melbourne and Fremantle. The national offering increased to 44,220 bales, up 5,656, with a small (0.1%) increase in the pass in rate to 9.5%. No sales next week due to the Easter recess, sales resume on 13 April at all three centres with 50,944 bales currently on offer.
- Stylish (MF4 & MF5), well measured, fine (<18.5 µm) Merino fleece lots with low VM (<1.5%) continue to be keenly sought in Sydney and gained up to 30 cents for the week. Broader fleece types were unchanged. Merino skirtings gained up to 20 cents on Tuesday. Lots with low VM (<2.5%) and favourable additional measurements rose up to 15 cents on Wednesday. The crossbred sector performed strongly as buyers chased lots with low VM (<1.5%) and suitable staple length and strength. Crutchings and stains rose on Tuesday (up 20 to 30 cents) before the oddment sector weakened on Wednesday. The Northern Regional Indicator closed at 1,369 c/kg clean, up 13 cents, the Northern Merino Carding Indicator rose 1 cent to 877 c/kg clean. The Sydney pass in rate was 8.3% with 208 bales withdrawn.
- Strong results in Melbourne on Tuesday as stylish (MF4) lots declared Non-Mulesed with favourable additional measurements attracted buyer interest with finer lots in favour. The Merino fleece sector softened on Wednesday as lots with lower yield and poorer length and strength were discounted. Merino skirtings gained ground on Tuesday (up 20 cents), fine (<18.5 µm) lots with low VM rose up to 45 cents. Well-prepared crossbred lots lifted on both sale days with poorly prepared lots passed in. The oddment sector maintained last week's levels. The Southern Regional Indicator gained 15 cents to 1,256 c/kg clean, the Southern Merino Carding Indicator lost 4 cents to 894 c/kg clean. The Melbourne pass in rate was 8.8% with 1,956 bales withdrawn.
- Tuesday produced price gains (4 to 11 cents) across the Fremantle Merino fleece MPGs. Mixed results occurred on Wednesday as the 18 and 18.5 µm MPGs gained further ground and broader MPGs eased. The Merino skirtings sector rose 20 to 40 cents for the week. The oddments sector eased on Tuesday as buyers discounted high VM locks with poorer style and maintained that level on Wednesday. The Western Regional Indicator closed unchanged at 1,346 c/kg clean, and the Western Merino Carding Indicator lost 8 cents to 883 c/kg clean. The Fremantle pass in rate was 12.7% with 602 bales withdrawn.

## AWEX WEEKLY WOOL PRICES

Regional Indicator	North	Wkly Chg	South	Wkly Chg	West	Wkly Chg
c/kg clean	1369	+13	1256	+15	1346	0
MICRON PRICE GUIDES						
16.5	2247	+8	2259n	+56	-	-
17	2118	+16	2116	+48	-	-
17.5	1983	+18	1993	+55	-	-
18	1828	+29	1831	+46	1823n	+28
18.5	1704	+32	1693	+19	1701	+32
19	1582	+11	1585	+12	1576	-6
19.5	1464	-5	1468	+7	1467	-10
20	1365	0	1366	+2	1337	-12
21	1285n	+5	1270	-3	1281n	-10
22	-	-	1254n	+5	-	-
23	-	-	-	-	-	-
24	-	-	-	-	-	-
25	-	-	0	-	-	-
26	-	-	804n	+16	-	-
28	530n	+20	526	+7	-	-
30	-	-	424	+14	-	-
32	-	-	285n	+2	-	-
MC	877n	+1	894n	-4	883n	-8

## AWEX EMI 2018/19 & 2019/20 Seasons vs Current

Currently: 1300 c/kg clean



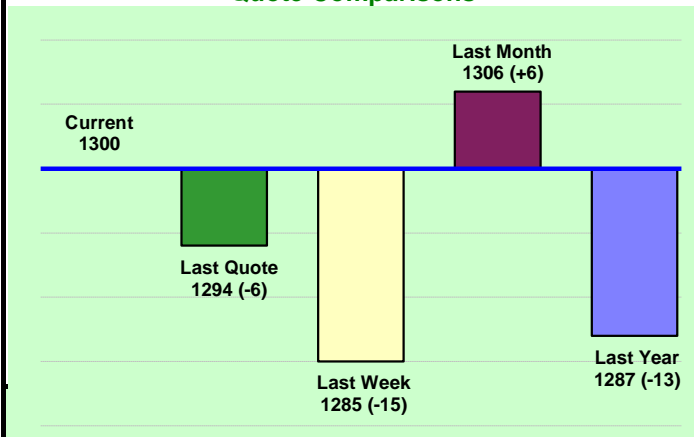
## UPCOMING AUCTION VOLUMES

	6/04/2021	13/04/2021	20/04/2021
Northern	S41	S42	S43
Sydney	RECESS	12,250	10,650
Southern	M41	M42	M43
Melbourne	RECESS	28,044	20,185
Western	F41	F42	F43
Fremantle	RECESS	10,650	8,650
<b>Total</b>	<b>RECESS</b>	<b>50,944</b>	<b>39,485</b>

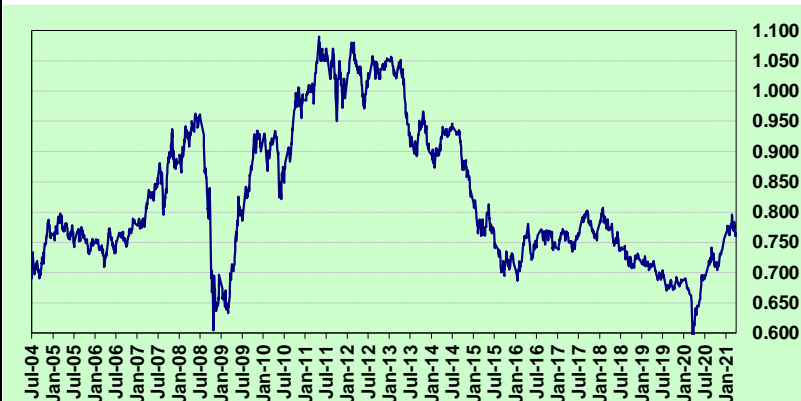
## THIS WEEK'S SALES STATISTICS

Centre	Bales Originally	Bales Offered	Bales Sold	Pass in Rate
Northern	11,550	13,226	12,127	8.3%
Southern	20,996	21,595	19,704	8.8%
Western	8,050	9,399	8,204	12.7%
<b>TOTAL</b>	<b>40,596</b>	<b>44,220</b>	<b>40,035</b>	<b>9.5%</b>

### AWEX Weekly Eastern Market Indicator Quote Comparisons



### AUD vs USD from 06-Jul-04 to 31-Mar-21



Micron	EMI	16.5	17	17.5	18	18.5	19	19.5	20	21	22	23	25	28	AUD
<b>Current MPG's</b>	1300	2253	2117	1988	1830	1699	1584	1466	1366	1278	1254	-	-	528	0.761
<b>10 year Average</b>	1349	1875	1802	1749	1689	1630	1573	1529	1490	1459	1428	1372	1223	1090	0.802
<b>This time last year</b>	1287	1824	1725	1644	1569	1521	1500	1472	1467	1462	-	-	-	717	0.613
<b>10 year High</b>	2116	3187	3007	2831	2683	2569	2462	2414	2391	2371	2350	2308	2153	1828	1.058
<b>10 year Low</b>	858	1267	1216	1177	1140	1060	997	947	905	884	863	953	941	402	0.557
<b>% Reported above current</b>	43%	25%	28%	30%	36%	37%	39%	45%	51%	57%	56%	0%	0%	94%	53%
<b>Diff b/w High &amp; Current</b>	816	934	890	843	853	870	879	948	1026	1094	1096	-	-	1300	0.297
<b>Diff b/w Ave &amp; Current</b>	-49	378	315	239	140	69	10	-63	-125	-182	-174	-	-	-562	-0.041

#### Percentile Bands

<b>95%</b>	1955	2978	2758	2573	2432	2350	2295	2273	2256	2238	2222	2167	1831	1529	1.050
<b>90%</b>	1826	2605	2515	2456	2352	2235	2150	2072	2051	2042	2034	1801	1383	1280	1.040
<b>80%</b>	1550	2444	2326	2229	2120	1993	1853	1772	1707	1646	1518	1428	1248	1182	1.002
<b>75%</b>	1505	2291	2211	2156	2052	1883	1784	1709	1609	1522	1449	1368	1165	1146	0.978
<b>60%</b>	1292	1963	1828	1743	1642	1606	1537	1470	1405	1375	1340	1296	1154	1052	0.885
<b>50%</b>	1243	1788	1648	1586	1540	1486	1442	1398	1350	1315	1273	1232	1123	969	0.781
<b>40%</b>	1179	1579	1538	1514	1473	1434	1382	1338	1281	1258	1222	1186	1093	931	0.764
<b>25%</b>	1087	1488	1400	1354	1319	1289	1256	1220	1190	1169	1150	1125	1052	897	0.732
<b>10%</b>	1013	1362	1293	1262	1220	1188	1160	1131	1102	1093	1071	1046	977	849	0.696

#### Indicative Basis Contract Prices

Date	MPG	17	17.5	18	18.5	19	19.5	20	21	22	23	28
Apr-2021		1950	1830	1750	1670	1570	1520	1310	1270	1240	1170	480
May-2021		1950	1830	1750	1670	1570	1520	1310	1270	1240	1170	480
Jun-2021		1950	1830	1750	1670	1570	1520	1310	1270	1240	1170	480
Jul-2021		1950	1830	1750	1670	1570	1520	1310	1270	1240	1170	480
Aug-2021		1950	1830	1750	1670	1570	1520	1310	1270	1240	1170	480
Sep-2021		1940	1820	1740	1670	1570	1520	1310	1270	1240	1170	480
Oct-2021		1930	1810	1730	1650	1570	1520	1310	1270	1240	1170	480
Nov-2021		1920	1800	1720	1650	1570	1520	1310	1270	1240	1170	480
Dec-2021		1950	1830	1750	1680	1600	1550	1340	1300	1270	1200	480
Jan-2022		1950	1830	1750	1680	1600	1550	1340	1300	1270	1200	480
Feb-2022		1950	1830	1750	1680	1600	1550	1340	1300	1270	1200	480
Mar-2022		1950	1830	1750	1680	1600	1550	1340	1300	1270	1200	480
Apr-2022		1950	1830	1750	1680	1600	1550	1340	1300	1270	1200	480
May-2022		1950	1830	1750	1680	1600	1550	1340	1300	1270	1200	480
Jun-2022		1950	1830	1750	1680	1600	1550	1340	1300	1270	1200	480

#### Mulesing Status P/D's

µm	Non Mulsed	Pain Relief
18	+42	+2
19	+40	0
20	+30	0
21	0	0
23	0	0
25	+12	0

All prices on this sheet are listed in c/kg clean. MPG's are average North/South AWEX quoted figures. Mulesing P/D's quoted by AWEX. Basis Contract prices are published purely as a guide.

Please use above figures as a guide to submit your GTC or Target orders. Call 1800 629 396.