

Wool Weekly

Friday, 16 April 2021

WOOL MARKET MOVEMENTS

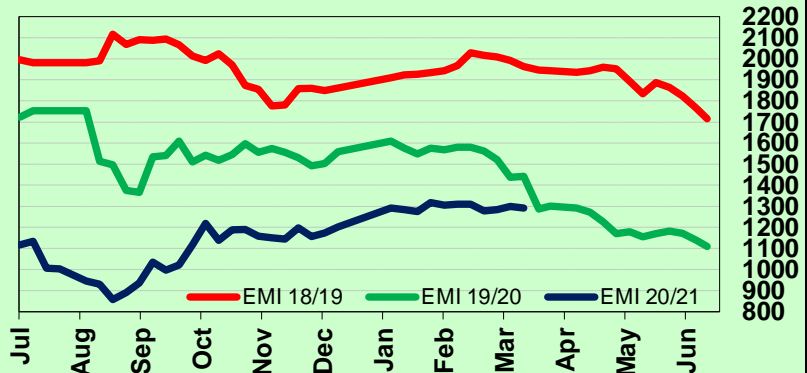
- Strong demand for finer (<18.0 µm) wool produced 5 to 80 cent weekly gains in these MPG's. However, this was offset by lacklustre demand for broader types which produced a net fall of 9 cents in the EMI to 1,291 c/kg clean. The crossbred sector continued to track downwards. The oddment sector had a positive week. The national offering increased to 46,256 bales, up 2,036 compared to week 40 and the national pass in rate rose by 4.7% to 14.2%. Sales in all three centres next week, with 45,544 bales currently rostered for sale.
- Finer (<18.0 µm) Merino fleece types were in demand in Sydney gaining 5 (18.0 µm) to 30 (17.0 µm) cents for the week. Broader types lost between 26 and 57 cents. The Merino skirtings market firmed on Tuesday, with fine (<17.5 µm), low VM (<25.5%) lots rising up to 20 cents, before the sector eased on Wednesday ending up to 10 cents lower. The crossbred and oddments markets trended downwards, with the latter impacted by a large selection of locks with high VM which lost 15 to 20 cents. The Northern Regional Indicator lost 14 cents to 1,355 c/kg clean with the Northern Merino Carding Indicator stable at 877c/kg clean. The Sydney pass in rate was 12.3% with 445 bales withdrawn.
- Prices changes for Merino fleece in Melbourne were based on quality. A limited selection of stylish (MF4), finer (<17.0 µm) lots with favourable additional measurements were keenly sought. Tuesday produced mixed price movements across range of MPG's, finer (<17.5 µm) MPG's gained 11 to 30 cents on Wednesday before the Merino sector surged upwards on Thursday. Merino skirtings were unchanged on Tuesday but rose strongly as the week progressed. Crossbred wools performed strongly on Tuesday, firmed on Wednesday before poorly prepared lots dragged the sector down on Thursday. The oddment market strengthened as the week progressed. The Southern Regional Indicator lost 6 cents to 1,250 c/kg clean as the Southern Merino Carding indicator gained 1 cent to 895 c/kg clean. The Melbourne pass in rate was 12.2% with 1,710 bales withdrawn.
- All Merino MPG's lost ground in Fremantle on Tuesday as a quarter of the offering was passed in, before the 18.0 MPG's rallied on Wednesday (up 19 cents). High VM (3 - 6%) Merino skirtings eased on Tuesday (down 10 to 20 cents) before recovering some lost ground on Wednesday. The oddment sector trended dearer. The Western Regional Indicator dropped 28 cents to 1,318 c/kg clean while the Western Merino Carding Indicator gained 13 cents to 896 c/kg clean. The Fremantle pass in rate was 21.1% with 1,579 bales withdrawn.

AWEX WEEKLY WOOL PRICES

Regional Indicator	North	Wkly Chg	South	Wkly Chg	West	Wkly Chg
c/kg clean	1355	-14	1250	-6	1318	-28

MICRON PRICE GUIDES						
16.5	-	-	2339n	+80	-	-
17	2148	+30	2172	+56	-	-
17.5	2007	+24	2045	+52	-	-
18	1833	+5	1871	+40	1830	+7
18.5	1678	-26	1718	+25	1683	-18
19	1546	-36	1557	-28	1556	-20
19.5	1430	-34	1433	-35	1436	-31
20	1308	-57	1336	-30	1293	-44
21	1250	-35	1245	-25	1233	-48
22	-	-	1226n	-28	-	-
23	-	-	-	-	-	-
24	-	-	-	-	-	-
25	-	-	-	-	-	-
26	-	-	800n	-4	-	-
28	510	-20	526	0	-	-
30	-	-	403	-21	-	-
32	-	-	273n	-12	-	-
MC	877	0	895n	+1	896	+13

AWEX EMI 2018/ 19 & 2019/ 20 Seasons vs Current
Currently: 1291 c/kg clean



UPCOMING AUCTION VOLUMES

	21/04/2021	28/04/2021	5/05/2021
Northern	S43	S44	S45
Sydney	10,241	10,662	8,750
Southern	M43	M44	M45
Melbourne	24,238	22,698	17,930
Western	F43	F44	F45
Fremantle	11,065	7,500	7,550
Total	45,544	40,860	34,230

THIS WEEK'S SALES STATISTICS

Centre	Bales Originally	Bales Offered	Bales Sold	Pass in Rate
Northern	13,470	11,344	9,949	12.3%
Southern	26,294	25,030	21,964	12.2%
Western	9,000	9,882	7,793	21.1%
TOTAL	48,764	46,256	39,706	14.2%

16 Apr 2021

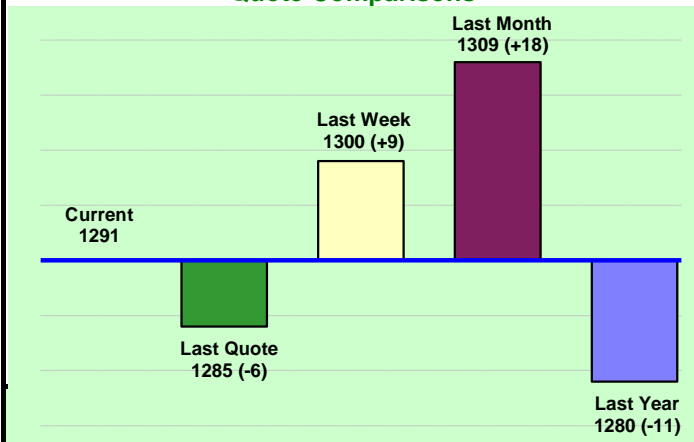
Nutrien Wool Report

EMI 1291 NMI 1355 SMI 1250 WMI 1318

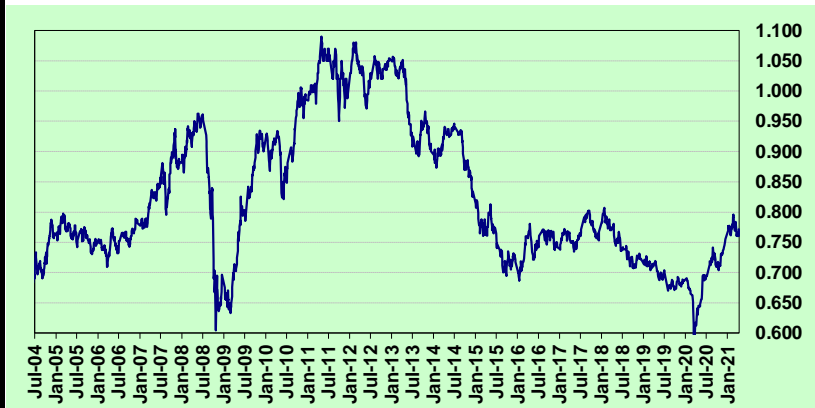


Average Nth-Sth MPG's as reported on 15 Apr 2021

AWEX Weekly Eastern Market Indicator Quote Comparisons



AUD vs USD from 06-Jul-04 to 15-Apr-21



Micron	EMI	16.5	17	17.5	18	18.5	19	19.5	20	21	22	23	25	28	AUD
Current MPG's	1291	2339	2172	2045	1871	1718	1557	1433	1336	1245	1226	-	-	526	0.771
10 year Average	1349	1876	1803	1750	1690	1630	1573	1529	1490	1458	1427	1372	1223	1090	0.802
This time last year	1292	1860	1758	1683	1597	1545	1516	1500	1487	1483	-	-	-	695	0.641
10 year High	2116	3187	3007	2831	2683	2569	2462	2414	2391	2371	2350	2308	2153	1828	1.058
10 year Low	858	1267	1216	1177	1140	1060	997	947	905	884	863	953	941	402	0.557
% Reported above current	45%	20%	25%	28%	33%	36%	40%	48%	54%	62%	61%	0%	0%	94%	44%
Diff b/w High & Current	825	848	835	786	812	851	905	981	1055	1126	1124	-	-	1302	0.287
Diff b/w Ave & Current	-58	463	369	295	181	88	-16	-96	-154	-213	-201	-	-	-564	-0.031

Percentile Bands

95%	1955	2978	2758	2573	2432	2350	2295	2273	2256	2238	2222	2167	1831	1528	1.050
90%	1825	2605	2515	2454	2352	2235	2149	2072	2051	2039	2033	1801	1383	1280	1.040
80%	1549	2437	2326	2229	2119	1993	1852	1771	1707	1645	1518	1428	1248	1182	1.000
75%	1503	2291	2210	2156	2051	1882	1783	1708	1609	1522	1448	1368	1165	1146	0.977
60%	1292	1966	1833	1748	1656	1609	1539	1469	1405	1375	1338	1296	1154	1052	0.884
50%	1243	1796	1649	1588	1541	1486	1445	1399	1349	1315	1273	1232	1123	969	0.781
40%	1179	1580	1539	1515	1474	1435	1383	1339	1283	1257	1223	1186	1093	931	0.764
25%	1088	1490	1401	1355	1320	1291	1256	1221	1190	1170	1150	1125	1052	896	0.732
10%	1013	1362	1293	1262	1221	1188	1161	1131	1103	1093	1072	1046	977	849	0.696

Indicative Basis Contract Prices

Date	MPG	17	17.5	18	18.5	19	19.5	20	21	22	23	28
Apr-2021		2030	1910	1830	1660	1560	1435	1300	1260	1230	1160	480
May-2021		2030	1910	1830	1660	1560	1435	1300	1260	1230	1160	480
Jun-2021		2030	1910	1830	1660	1560	1435	1300	1260	1230	1160	500
Jul-2021		2030	1910	1830	1660	1560	1435	1300	1260	1230	1160	500
Aug-2021		2030	1910	1830	1660	1560	1435	1300	1260	1230	1160	500
Sep-2021		2030	1910	1830	1660	1560	1435	1300	1260	1230	1160	500
Oct-2021		2030	1910	1830	1640	1560	1435	1300	1260	1230	1160	500
Nov-2021		2030	1910	1830	1640	1560	1435	1300	1260	1230	1160	500
Dec-2021		2050	1930	1850	1660	1580	1455	1320	1280	1250	1180	500
Jan-2022		2050	1930	1850	1660	1580	1455	1320	1280	1250	1180	500
Feb-2022		2050	1930	1850	1660	1580	1455	1320	1280	1250	1180	480
Mar-2022		2050	1930	1850	1660	1580	1455	1320	1280	1250	1180	480
Apr-2022		2050	1930	1850	1660	1580	1455	1320	1280	1250	1180	480
May-2022		2050	1930	1850	1660	1580	1455	1320	1280	1250	1180	480
Jun-2022		2050	1930	1850	1660	1580	1455	1320	1280	1250	1180	480

Mulesing Status P/D's

µm	Non Mulsed	Pain Relief
18	+42	+2
19	+40	0
20	+30	0
21	0	0
23	0	0
25	+12	0

All prices on this sheet are listed in c/kg clean. MPG's are average North/South AWEX quoted figures. Mulesing P/D's quoted by AWEX. Basis Contract prices are published purely as a guide.

Please use above figures as a guide to submit your GTC or Target orders. Call 1800 629 396.