

Wool Weekly



Thursday, 22 April 2021

WOOL MARKET MOVEMENTS

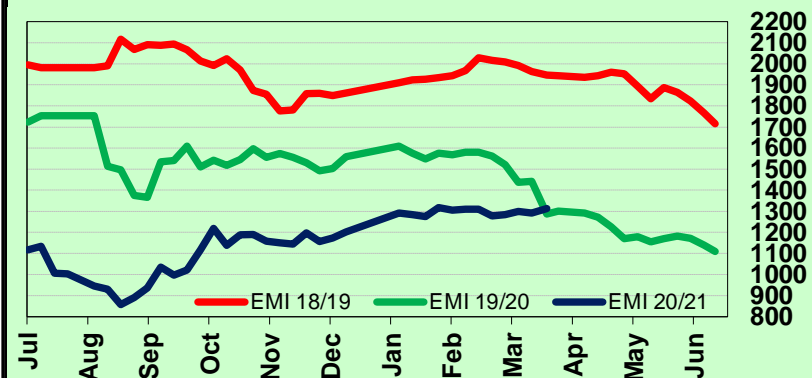
- Strong demand for fine wool pushed the EMI up 21 cents to 1,312 c/kg clean. The finer MPG's (16.5 to 17.5 µm) all closed higher than 2,095 c/kg clean. Merino skirtings and oddment sectors both made solid gains. The national offering (40,504 bales) and pass in rate (10.7%) both contracted. A larger offering next week (50,821 bales) with sales across three days.
- Finer MPG's surged in Sydney on Tuesday, the 17 and 17.5 µm MPG's gained 108 and 97 cents respectively. All other Merino fleece MPG's rose (25 to 75 cents). The 16.5 to 18.5 µm MPG's gained 8 to 20 cents on Wednesday, but broader MPG's (>19.0 µm) softened, losing 20 cents. High VM (>2%) lots were out of favour. Merino skirtings mimicked the fleece sector, with solid demand for well measured, fine (<17.5 µm), low VM (<2%) lots on Tuesday (some rose 100 cents), before prices eased on Wednesday. Crossbred lots maintained last week's levels, although well prepared lots with low VM (<1.5%) rose up to 20 cents. Finer oddments gained up to 50 cents on Tuesday before the sector flattened on Wednesday. The Northern Regional Indicator gained 43 cents to 1,398 c/kg clean and the Northern Merino Carding Indicator rose 20 cents to 897 c/kg clean. The Sydney pass in rate was 5.5% with 258 bales withdrawn.
- Melbourne's sales followed the same path as Sydney, although the weekly price rises were not as large. Strong demand for fine, stylish lots with favourable additional measurements and low VM, which were in low supply, pushed prices higher as the sale progressed. Broader MPG's lost ground, especially those with higher VM. Fine Merino skirtings (<17.5 µm) with low (<2%) VM rose by 30 cents on Tuesday, before the sector strengthened on Wednesday rising a further 20 to 40 cents. Crossbred prices were soft on Tuesday, poorly prepared lines with inferior style failed to spark buyer interest, before the sector strengthened on Wednesday. The oddment sector made solid gains as the week progressed. The Southern Regional Indicator closed at 1,258 c/kg clean, up 8 cents, and the Southern Merino Carding Indicator rose 15 cents to 910 c/kg clean. The Melbourne pass in rate was 12.9% with 1,736 bales withdrawn.
- Fremantle followed the lead of the Eastern markets with price gains (26 to 78 cents) in all Merino fleece MPG's on Tuesday, before softening on Wednesday as all MPG's, except the 18.5 µm (up 14 cents), retreated. Merino skirtings and oddments both enjoyed sold price increases with finer types making the greatest gains. The Western Regional Indicator rose 11 cents to 1,329 c/kg clean and the Western Merino Carding Indicator gained 26 cents to 922 c/kg clean. The Fremantle pass in rate was 10.9% with 1,484 bales withdrawn.

AWEX WEEKLY WOOL PRICES

Regional Indicator	North	Wkly Chg	South	Wkly Chg	West	Wkly Chg
c/kg clean	1398	+43	1258	+8	1329	+11

MICRON PRICE GUIDES						
16.5	2422	-	2383n	+44	-	-
17	2274n	+126	2263n	+91	-	-
17.5	2112	+105	2095	+50	-	-
18	1916	+83	1916	+45	1902n	+72
18.5	1747	+69	1752	+34	1749n	+66
19	1595	+49	1576	+19	1584	+28
19.5	1466	+36	1461	+28	1456	+20
20	1333	+25	1315	-21	1313	+20
21	1262n	+12	1239	-6	1226n	-7
22	-	-	1179n	-47	-	-
23	-	-	-	-	-	-
24	-	-	-	-	-	-
25	-	-	-	-	-	-
26	800n	-	794n	-6	-	-
28	515n	+5	528	+2	-	-
30	-	-	409	+6	-	-
32	-	-	273n	0	-	-
MC	897n	+20	910n	+15	922n	+26

AWEX EMI 2018/ 19 & 2019/ 20 Seasons vs Current
Currently: 1312 c/kg clean



UPCOMING AUCTION VOLUMES

	27/04/2021	4/05/2021	11/05/2021
Northern	S44	S45	S46
Sydney	12,493	9,300	10,560
Southern	M44	M45	M46
Melbourne	27,286	20,500	21,392
Western	F44	F45	F46
Fremantle	11,042	7,050	5,600
Total	50,821	36,850	37,552

THIS WEEK'S SALES STATISTICS

Centre	Bales Originally	Bales Offered	Bales Sold	Pass in Rate
Northern	10,650	9,692	9,155	5.5%
Southern	20,185	21,013	18,297	12.9%
Western	8,650	9,697	8,642	10.9%
TOTAL	39,485	40,402	36,094	10.7%

22 Apr 2021

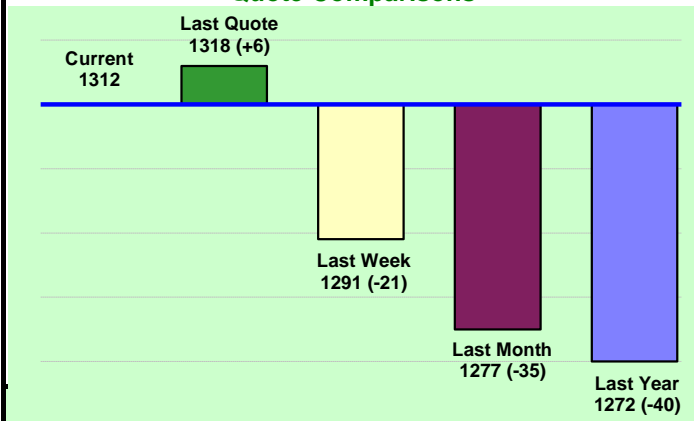
Nutrien Wool Report

EMI 1312 NMI 1398 SMI 1258 WMI 1329



Average Nth-Sth MPG's as reported on 21 Apr 2021

AWEX Weekly Eastern Market Indicator Quote Comparisons



AUD vs USD from 06-Jul-04 to 21-Apr-21



Micron	EMI	16.5	17	17.5	18	18.5	19	19.5	20	21	22	23	25	28	AUD
Current MPG's	1312	2403	2269	2104	1916	1750	1586	1464	1324	1251	1179	-	-	522	0.771
10 year Average	1349	1877	1804	1751	1690	1630	1573	1528	1489	1458	1426	1372	1223	1090	0.802
This time last year	1272	1863	1742	1663	1581	1532	1485	1464	1456	1449	-	-	-	674	0.631
10 year High	2116	3187	3007	2831	2683	2569	2462	2414	2391	2371	2350	2308	2153	1828	1.058
10 year Low	858	1267	1216	1177	1140	1060	997	947	905	884	863	953	941	402	0.557
% Reported above current	40%	18%	22%	27%	30%	35%	38%	45%	56%	61%	70%	0%	0%	95%	44%
Diff b/w High & Current	804	785	738	728	767	819	877	950	1067	1121	1171	-	-	1307	0.287
Diff b/w Ave & Current	-37	525	465	353	226	119	12	-65	-165	-207	-247	-	-	-568	-0.031

Percentile Bands

95%	1955	2978	2758	2571	2432	2350	2295	2273	2256	2238	2222	2167	1831	1528	1.050
90%	1825	2604	2515	2453	2351	2233	2148	2072	2050	2037	2033	1801	1383	1280	1.040
80%	1549	2436	2325	2228	2118	1992	1851	1770	1706	1645	1517	1428	1248	1182	1.000
75%	1503	2293	2213	2155	2050	1882	1783	1706	1608	1522	1448	1368	1165	1146	0.977
60%	1293	1968	1833	1750	1667	1610	1541	1469	1405	1375	1338	1296	1154	1052	0.883
50%	1243	1802	1651	1589	1541	1487	1446	1400	1349	1314	1272	1232	1123	969	0.780
40%	1180	1580	1540	1515	1476	1435	1383	1339	1285	1257	1223	1186	1093	931	0.764
25%	1088	1492	1402	1355	1320	1291	1256	1221	1191	1170	1150	1125	1052	896	0.732
10%	1013	1362	1293	1262	1221	1188	1161	1131	1103	1093	1072	1046	977	849	0.696

Indicative Basis Contract Prices

Date	MPG	17	17.5	18	18.5	19	19.5	20	21	22	23	28
Apr-2021		2030	1910	1830	1660	1560	1435	1300	1260	1230	1160	480
May-2021		2030	1910	1830	1660	1560	1435	1300	1260	1230	1160	480
Jun-2021		2030	1910	1830	1660	1560	1435	1300	1260	1230	1160	500
Jul-2021		2030	1910	1830	1660	1560	1435	1300	1260	1230	1160	500
Aug-2021		2030	1910	1830	1660	1560	1435	1300	1260	1230	1160	500
Sep-2021		2030	1910	1830	1660	1560	1435	1300	1260	1230	1160	500
Oct-2021		2030	1910	1830	1640	1560	1435	1300	1260	1230	1160	500
Nov-2021		2030	1910	1830	1640	1560	1435	1300	1260	1230	1160	500
Dec-2021		2050	1930	1850	1660	1580	1455	1320	1280	1250	1180	500
Jan-2022		2050	1930	1850	1660	1580	1455	1320	1280	1250	1180	500
Feb-2022		2050	1930	1850	1660	1580	1455	1320	1280	1250	1180	480
Mar-2022		2050	1930	1850	1660	1580	1455	1320	1280	1250	1180	480
Apr-2022		2050	1930	1850	1660	1580	1455	1320	1280	1250	1180	480
May-2022		2050	1930	1850	1660	1580	1455	1320	1280	1250	1180	480
Jun-2022		2050	1930	1850	1660	1580	1455	1320	1280	1250	1180	480

Mulesing Status P/D's

µm	Non Mulsed	Pain Relief
18	+42	+2
19	+40	0
20	+30	0
21	0	0
23	0	0
25	+12	0

All prices on this sheet are listed in c/kg clean. MPG's are average North/South AWEX quoted figures. Mulesing P/D's quoted by AWEX. Basis Contract prices are published purely as a guide.

Please use above figures as a guide to submit your GTC or Target orders. Call 1800 629 396.