

Wool Weekly



Friday, 30 April 2021

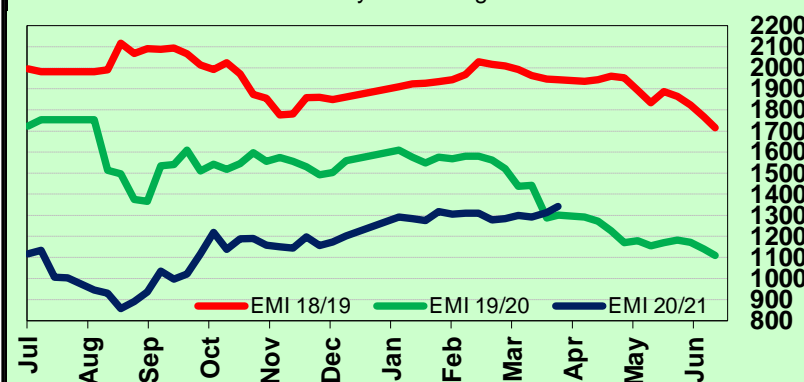
WOOL MARKET MOVEMENTS

- Another week of solid demand, this time across the entire MPG range, pushed the EMI up 30 cents to 1,342 c/kg clean - its highest level for 12 months. Style was the major driver of price this week in both the Merino fleece and skirtings sectors. The national offering was 47,446 bales, up 7,044 bales, with 22.4% of the Merino fleece offering assessed as MF4 or better, up 5.2% on last week. The national pass-in rate was 6.4 %, 4.2% lower than last week. A 2-day sale series next week with all three centres in operation and 48,245 bales currently on offer.
- Fine (<18.5 µm), stylish (MF4) Merino fleece lots with favourable additional measurements continue to be keenly sought in Sydney. An unchanged Merino fleece sector on Tuesday (except the 21 µm - down 20 cents), before all MPGs gained between 25 and 41 cents on Wednesday. Merino skirtings mirrored the fleece sector, fine (<18.5 µm) low VM (<2.5%) lots gained ground on Tuesday before the entire sector rose 20 to 30 cents on Wednesday. Crossbreds lost up to 20 cents on Tuesday, before recovering some lost ground on Wednesday. Crutchings and stains rose 10 to 20 cents on Tuesday, before all types gained ground on Wednesday. The Northern Regional Indicator gained 23 cents to 1,421 c/kg clean and the Northern Merino Carding Indicator rose 25 cents to 922 c/kg clean. The Sydney pass in rate was 6.3% with 684 bales withdrawn.
- A 3-day sale in Melbourne produced price rises across all MPGs on Tuesday (5 to 22 cents) and Wednesday (11 to 45 cents). Thursday produced no change in the 17.5, 18 and 22 µm MPGs, as other MPGs enjoyed further gains (2 to 37 cents). Merino skirtings performed strongly, led by stylish, fine (<18.0 µm) lots with low (< 2%) VM. The crossbred sector was firm on Tuesday and Wednesday, before discounts for poorly prepared lots pushed prices downwards. The oddments market was mixed. The Southern Regional Indicator gained 34 cents to 1,292 c/kg clean as the Southern Merino Carding Indicator rose 7 cents to 917 c/kg clean. The Melbourne pass in rate was 6.5% with 1,659 bales withdrawn.
- Prices tracked upwards in Fremantle on Wednesday. Merino fleece MPGs each more than 34 cents, with finer types (<19.0 µm) leading the way. Further price gains occurred on Thursday as broader types (>19.5 µm) lead the way. The Merino skirtings market surged, with finer (<18.0 µm) types leading the way rising up to 80 cents for the week. The oddments sector was firm with modest price rises. The Western Regional indicator jumped 46 cents to 1,375 c/kg clean and the Western Merino Carding Indicator rose 9 cents to 931 c/kg clean. The Fremantle pass in rate was 6.4% with 715 bales withdrawn.

AWEX WEEKLY WOOL PRICES

Regional Indicator	North	Wkly Chg	South	Wkly Chg	West	Wkly Chg
c/kg clean	1421	+23	1292	+34	1375	+46
MICRON PRICE GUIDES						
16.5	2457	+35	2471n	+88	-	-
17	2304	+30	2305	+42	-	-
17.5	2142	+30	2128	+33	-	-
18	1948	+32	1951	+35	1942n	+40
18.5	1787	+40	1786	+34	1799n	+50
19	1637	+42	1648	+72	1635	+51
19.5	1497	+31	1494	+33	1508	+52
20	1365	+32	1367	+52	1367	+54
21	1277	+15	1300	+61	1287n	+61
22	-	-	1233n	+54	-	-
23	-	-	-	-	-	-
24	-	-	-	-	-	-
25	-	-	-	-	-	-
26	-	-	793n	-1	-	-
28	515	0	520	-8	-	-
30	-	-	414	+5	-	-
32	-	-	278n	+5	-	-
MC	922	+25	917n	+7	931n	+9

AWEX EMI 2018/ 19 & 2019/ 20 Seasons vs Current
Currently: 1342 c/kg clean



UPCOMING AUCTION VOLUMES

	5/05/2021	12/05/2021	19/05/2021
Northern	S45	S46	S47
Sydney	14,082	10,980	9,360
Southern	M45	M46	M47
Melbourne	24,910	21,925	17,780
Western	F45	F46	F47
Fremantle	9,253	5,750	5,630
Total	48,245	38,655	32,770

THIS WEEK'S SALES STATISTICS

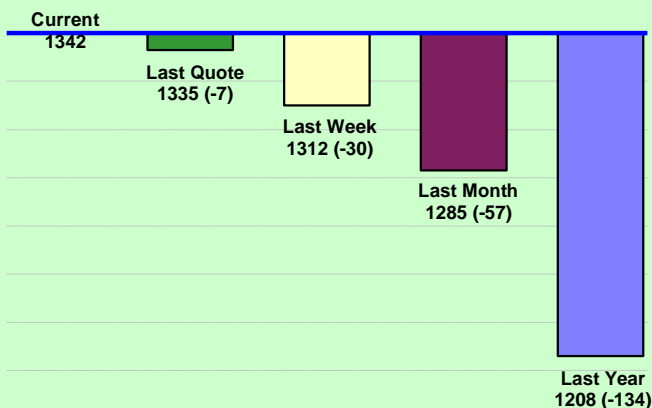
Centre	Bales Originally	Bales Offered	Bales Sold	Pass in Rate
Northern	10,630	12,017	11,256	6.3%
Southern	22,058	25,073	23,448	6.5%
Western	8,700	10,356	9,692	6.4%
TOTAL	41,388	47,446	44,396	6.4%

30 Apr 2021

Nutrien Wool Report

EMI 1342 NMI 1421 SMI 1292 WMI 1375

Average Nth-Sth MPG's as reported on 29 Apr 2021

AWEX Weekly Eastern Market Indicator
Quote Comparisons

AUD vs USD from 06-Jul-04 to 29-Apr-21



Micron	EMI	16.5	17	17.5	18	18.5	19	19.5	20	21	22	23	25	28	AUD
Current MPG's	1342	2471	2305	2128	1951	1786	1648	1494	1367	1300	1233	-	-	520	0.779
10 year Average	1349	1879	1805	1752	1691	1631	1573	1528	1489	1457	1426	1372	1223	1090	0.802
This time last year	1259	1868	1727	1637	1544	1508	1456	1438	1419	1408	-	-	-	669	0.645
10 year High	2116	3187	3007	2831	2683	2569	2462	2414	2391	2371	2350	2308	2153	1828	1.058
10 year Low	858	1267	1216	1177	1140	1060	997	947	905	884	863	953	941	402	0.557
% Reported above current	38%	17%	20%	26%	28%	34%	36%	40%	50%	54%	59%	0%	0%	95%	39%
Diff b/w High & Current	774	716	702	703	732	783	814	920	1024	1071	1117	-	-	1308	0.279
Diff b/w Ave & Current	-7	592	500	376	260	155	75	-34	-122	-157	-193	-	-	-570	-0.023

Percentile Bands

95%	1955	2978	2758	2569	2432	2350	2295	2273	2256	2238	2222	2167	1831	1528	1.050
90%	1824	2604	2515	2453	2351	2231	2146	2071	2049	2037	2030	1801	1383	1280	1.040
80%	1549	2449	2324	2228	2118	1991	1849	1769	1705	1644	1517	1428	1248	1182	1.000
75%	1502	2299	2216	2155	2050	1881	1781	1705	1607	1520	1446	1368	1165	1146	0.976
60%	1294	1974	1842	1752	1680	1615	1541	1470	1404	1373	1338	1296	1154	1052	0.882
50%	1244	1806	1655	1591	1542	1487	1447	1400	1349	1314	1272	1232	1123	969	0.780
40%	1180	1580	1540	1516	1478	1436	1384	1339	1286	1257	1223	1186	1093	931	0.764
25%	1088	1496	1402	1355	1321	1291	1257	1222	1191	1172	1150	1125	1052	896	0.732
10%	1014	1362	1294	1263	1221	1188	1161	1132	1103	1093	1072	1046	977	849	0.696

Indicative Basis Contract Prices

Date	MPG	17	17.5	18	18.5	19	19.5	20	21	22	23	28
May-2021		2070	1950	1870	1700	1600	1475	1300	1260	1200	1160	480
Jun-2021		2070	1950	1870	1700	1600	1475	1300	1260	1200	1160	480
Jul-2021		2070	1950	1870	1700	1600	1475	1300	1260	1200	1160	480
Aug-2021		2070	1950	1870	1700	1600	1475	1300	1260	1200	1160	480
Sep-2021		2070	1950	1870	1700	1600	1475	1300	1260	1200	1160	480
Oct-2021		2070	1950	1870	1700	1600	1475	1300	1260	1200	1160	480
Nov-2021		2070	1950	1870	1680	1600	1475	1300	1260	1200	1160	480
Dec-2021		2070	1950	1870	1680	1600	1475	1300	1260	1200	1160	480
Jan-2022		2100	1980	1900	1710	1630	1505	1340	1300	1230	1200	480
Feb-2022		2100	1980	1900	1710	1630	1505	1340	1300	1230	1200	480
Mar-2022		2100	1980	1900	1710	1630	1505	1340	1300	1230	1200	480
Apr-2022		2100	1980	1900	1710	1630	1505	1340	1300	1230	1200	480
May-2022		2100	1980	1900	1710	1630	1505	1340	1300	1230	1200	480
Jun-2022		2100	1980	1900	1710	1630	1505	1340	1300	1230	1200	480
Jul-2022		2100	1980	1900	1710	1630	1505	1340	1300	1230	1200	480

Mulesing Status P/D's

µm	Non Mulsed	Pain Relief
18	+42	+2
19	+40	0
20	+30	0
21	0	0
23	0	0
25	+12	0

All prices on this sheet are listed in c/kg clean. MPG's are average North/South AWEX quoted figures. Mulesing P/D's quoted by AWEX. Basis Contract prices are published purely as a guide.

Please use above figures as a guide to submit your GTC or Target orders. Call 1800 629 396.