

Wool Weekly



Friday, 14 May 2021

WOOL MARKET MOVEMENTS

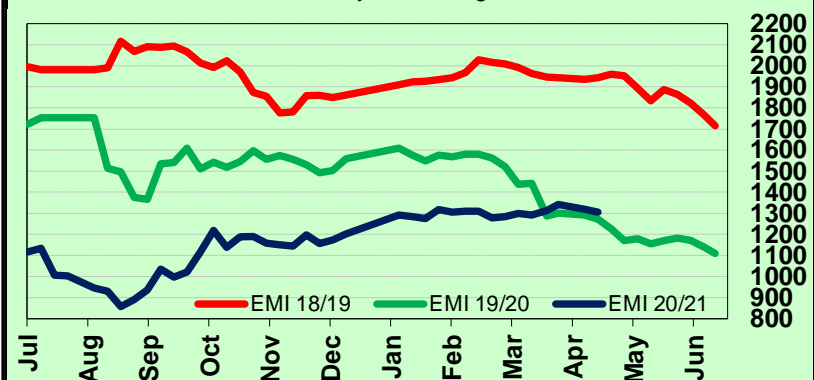
- Vegetable matter content impacted prices at all three centres across most sectors in Australia this week. The national offering increased to 49,771 bales, up 2,213 bales. Demand was steady, although most MPGs trended lower for the week, and the EMI closed at 1,306 c/kg clean down 13 cents. The national pass in rate was 12% down 3.3%. All three centres will sell over two days next week with 45,929 bales on offer.
- The Sydney Merino fleece marked drifted lower on Tuesday, due to weaker demand for finer types. Although some well measured, stylish (MF4), superfine (<16.5 µm) lots rose up to 10 cents. VM content influenced fleece prices on Wednesday. Merino skirtings tended to maintain last week's level, although less stylish lots lost 10 to 20 cents. The crossbred sector continued to track downwards; 20 to 40 cents lower for the week. The oddment sector drifted lower. The Northern Regional Indicator lost 16 cents to 1,377 c/kg clean and the Northern Merino Carding Indicator lost 20 cents to 881 c/kg clean. The Sydney pass in rate was 10% with 208 bales withdrawn.
- A 3-day sale in Melbourne saw buyers chase 'Non Mulesed' and 'Ceased Mulesed' lots on Tuesday with premiums for these lots underpinning Merino fleece prices. Yield and VM levels dictated prices on Wednesday, although broader lots (>19 µm) were less affected. Premiums for low (<1% VM) lots were evident on Thursday. Fine (<17 µm) Merino skirtings trended lower on Tuesday (down 30 cents); broader lots were unchanged. High VM (>5%) lots were discounted on Wednesday and Thursday. Poorly prepared crossbred lots pushed the sector downwards on Tuesday, the sector stabilised on Wednesday and broader (>28.0 µm) lots drifted lower on Thursday. Oddments were unchanged on Tuesday before weakening as the week progressed. The Southern Regional Indicator lost 10 cents to 1,261 c/kg clean and the Southern Merino Carding Indicator fell 22 cents to 899 c/kg clean. The Melbourne pass in rate was 12.4% with 1,659 bales withdrawn.
- Mixed results in Fremantle's Merino fleece sector on Tuesday, with the 19 to 20 µm MPGs in favour (up 1 to 6 cents). The sector strengthened on Wednesday as high early pass in rates (30%) reduced the available offering. Tuesday's Merino skirtings prices were based on VM, lots carrying >4% dropped 35 to 45 cents and were unchanged on Wednesday. Oddments trended lower on Tuesday before regaining lost ground on Wednesday rising 15 to 25 cents. The Western Regional Indicator lost 5 cents to 1,350 c/kg clean and the Western Merino Carding Indicator lost 8 cents to 916 c/kg clean. The Fremantle pass in rate was 13.7% with 662 bales withdrawn.

AWEX WEEKLY WOOL PRICES

Regional Indicator	North	Wkly Chg	South	Wkly Chg	West	Wkly Chg
c/kg clean	1377	-16	1261	-10	1350	-5

MICRON PRICE GUIDES						
16.5	2439	+5	2427n	-16	-	-
17	2258	-10	2270	-8	-	-
17.5	2073	-27	2061	-15	-	-
18	1896	-17	1896	-24	1880n	-9
18.5	1738	-9	1740	-5	1723n	-14
19	1592	-5	1592	-6	1592	+11
19.5	1462	-10	1467	-11	1468	+2
20	1339	-5	1346	-11	1335	+8
21	1274n	-3	1266	-17	1278n	-2
22	-	-	1247n	+14	-	-
23	-	-	-	-	-	-
24	-	-	-	-	-	-
25	-	-	-	-	-	-
26	-	-	755n	-8	-	-
28	459n	-40	471	-30	-	-
30	-	-	371	-27	-	-
32	-	-	231n	-22	-	-
MC	881n	-20	889n	-22	916n	-8

AWEX EMI 2018/ 19 & 2019/ 20 Seasons vs Current
Currently: 1306 c/kg clean



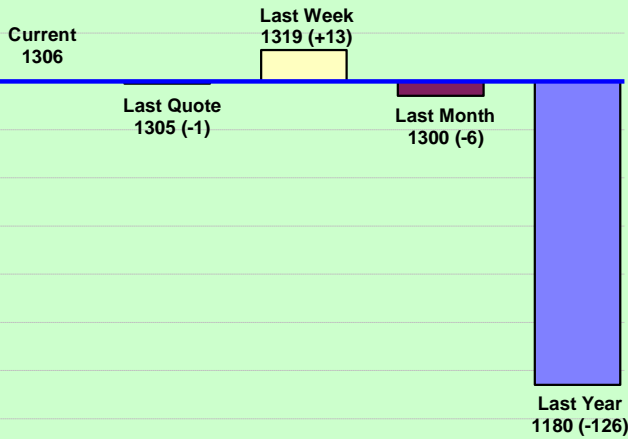
UPCOMING AUCTION VOLUMES

	19/05/2021	26/05/2021	2/06/2021
Northern	S47	S48	S49
Sydney	13,332	11,340	9,540
Southern	M47	M48	M49
Melbourne	24,872	24,185	20,290
Western	F47	F48	F49
Fremantle	7,725	7,830	7,700
Total	45,929	43,355	37,530

THIS WEEK'S SALES STATISTICS

Centre	Bales Originally	Bales Offered	Bales Sold	Pass in Rate
Northern	10,560	13,600	12,241	10.0%
Southern	21,392	26,850	23,520	12.4%
Western	5,600	9,321	8,047	13.7%
TOTAL	37,552	49,771	43,808	12.0%

AWEX Weekly Eastern Market Indicator Quote Comparisons



AUD vs USD from 06-Jul-04 to 13-May-21



Micron	EMI	16.5	17	17.5	18	18.5	19	19.5	20	21	22	23	25	28	AUD
Current MPG's	1306	2427	2270	2061	1896	1740	1592	1467	1346	1266	1247	-	-	471	0.772
10 year Average	1348	1882	1808	1754	1692	1632	1573	1528	1488	1456	1425	1371	1223	1089	0.802
This time last year	1179	1770	1635	1570	1509	1456	1398	1343	1311	1276	-	-	-	576	0.648
10 year High	2116	3187	3007	2831	2683	2569	2462	2414	2391	2371	2350	2308	2153	1828	1.058
10 year Low	858	1267	1216	1177	1140	1060	997	947	905	884	863	953	941	402	0.557
% Reported above current	42%	18%	22%	28%	32%	36%	39%	45%	52%	59%	58%	0%	0%	98%	43%
Diff b/w High & Current	810	760	737	770	787	829	870	947	1045	1105	1103	-	-	1357	0.286
Diff b/w Ave & Current	-42	545	462	307	204	108	19	-61	-142	-190	-178	-	-	-618	-0.030

Percentile Bands

95%	1954	2976	2757	2566	2432	2350	2295	2273	2256	2238	2221	2167	1830	1528	1.050
90%	1823	2604	2514	2453	2350	2228	2144	2071	2047	2037	2024	1801	1383	1280	1.040
80%	1548	2449	2323	2227	2118	1991	1849	1769	1704	1642	1517	1428	1246	1182	1.000
75%	1502	2309	2222	2151	2050	1880	1779	1704	1606	1510	1444	1368	1165	1146	0.976
60%	1295	1983	1855	1767	1697	1632	1547	1470	1404	1371	1334	1296	1154	1052	0.881
50%	1246	1806	1662	1592	1543	1488	1448	1401	1349	1312	1270	1232	1123	969	0.780
40%	1181	1580	1540	1517	1478	1439	1384	1341	1288	1259	1224	1186	1093	931	0.765
25%	1088	1496	1403	1356	1323	1291	1258	1223	1192	1173	1150	1125	1052	896	0.732
10%	1014	1363	1294	1264	1221	1188	1161	1132	1104	1094	1073	1046	977	849	0.697

Indicative Basis Contract Prices

Date	MPG	17	17.5	18	18.5	19	19.5	20	21	22	23	28
May-2021		2070	1950	1870	1690	1590	1465	1300	1260	1200	1160	460
Jun-2021		2070	1950	1870	1690	1590	1465	1300	1260	1200	1160	460
Jul-2021		2070	1950	1870	1690	1590	1465	1300	1260	1200	1160	460
Aug-2021		2070	1950	1870	1690	1590	1465	1300	1260	1200	1160	460
Sep-2021		2070	1950	1870	1690	1590	1465	1300	1260	1200	1160	460
Oct-2021		2070	1950	1870	1690	1590	1465	1300	1260	1200	1160	460
Nov-2021		2070	1950	1870	1670	1590	1465	1300	1260	1200	1160	460
Dec-2021		2070	1950	1870	1670	1590	1465	1300	1260	1200	1160	460
Jan-2022		2100	1980	1900	1710	1630	1505	1340	1300	1230	1200	460
Feb-2022		2100	1980	1900	1710	1630	1505	1340	1300	1230	1200	460
Mar-2022		2100	1980	1900	1710	1630	1505	1340	1300	1230	1200	460
Apr-2022		2100	1980	1900	1710	1630	1505	1340	1300	1230	1200	460
May-2022		2100	1980	1900	1710	1630	1505	1340	1300	1230	1200	460
Jun-2022		2100	1980	1900	1710	1630	1505	1340	1300	1230	1200	460
Jul-2022		2100	1980	1900	1710	1630	1505	1340	1300	1230	1200	460

Mulesing Status P/D's

µm	Non Mulsed	Pain Relief
18	+42	+2
19	+40	0
20	+30	0
21	0	0
23	0	0
25	+12	0

All prices on this sheet are listed in c/kg clean. MPG's are average North/South AWEX quoted figures. Mulesing P/D's quoted by AWEX. Basis Contract prices are published purely as a guide.

Please use above figures as a guide to submit your GTC or Target orders. Call 1800 629 396.