

Wool Weekly



Thursday, 24 June 2021

WOOL MARKET MOVEMENTS

- This week's national offering of 33,330 bales (down 9,166 bales from week 51) was the smallest weekly offering for 8 months. The reduced offering sparked keen demand in Sydney and Melbourne producing double digit price rises in all Merino fleece MPG's, except the 20 and 21 µm MPG's in Melbourne, and strong gains in the skirtings, crossbred and oddments sectors. While the finer end of the micron range made further gains in both centres on Wednesday, broader fleece types tended to soften as did the skirtings, crossbred and oddment sectors. The EMI rose 20 cents to 1,468 c/kg clean, the sixth consecutive weekly price rise. The national pass in rate was 5.1%, up 0.5% on week 51. All three selling centres are operating next week, the final sale for the current season, with 44,406 bales currently rostered for sale.
- A strong performance for the Sydney Merino fleece sector on Tuesday with all MPG's recording upward price movements. The greatest gains (40 to 50 cents) occurred at the finer end of the range (16.5 to 17.5 µm). Demand for the finer end of the range (<16.5 µm) continued into Wednesday, with further 20 to 30 cent gains as broader lots lost some ground. Fine (<18.5 µm) Merino skirtings with low VM (<2.5%) jumped 40 cents on Tuesday, other lots rose 20 to 30 cents before the sector maintained ground on Wednesday. The crossbred sector rose 10 to 20 cents on Tuesday before easing 5 to 15 cents on Wednesday. Finer (<18.5 µm) locks, crutchings & stains were in favour (up 10 to 20 cents) on Tuesday, broader lots maintained last week's level. The oddment sector maintained those values on Wednesday. The Northern Regional Indicator rose 21 cents to 1,564 c/kg clean and the Northern Merino Carding Indicator closed at 978 c/kg up 2 cents. The Sydney pass in rate was 4.6% with 153 bales withdrawn.
- Selective purchasing was the feature of early trade in Melbourne on Tuesday as buyers chased stylish (MF4) Merino fleece lots with favourable length and strength measurements. The 17 to 19 µm MPG's gained 30 cents with finer lots (<16.5 µm) up 40 to 60 cents. The 16.5 µm MPG rose a further 40 cents on Wednesday on the back of sustained demand, broader MPG's tended to soften as the sale progressed. Merino skirtings opened strongly on Tuesday lead by stylish, finer lots (<17.5 µm) with low VM (<1.5%), but the sector weakened on Wednesday. The crossbred sector had a strong day on Tuesday with price rises across all MPG's and maintained that level on Wednesday. High yielding oddments were in favour on Tuesday before the sector weakened on Wednesday. The Southern Regional Indicator rose 18 cents to 1,407 c/kg clean as the Southern Merino Carding Indicator gained 5 cents to 951 c/kg clean.

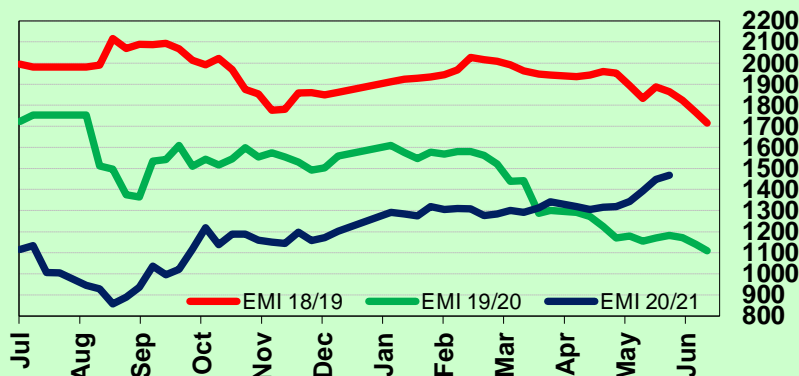
THIS WEEK'S SALES STATISTICS

Centre	Bales Originally	Bales Offered	Bales Sold	Pass in Rate
Northern	10,960	13,084	12,488	4.6%
Southern	21,190	20,246	19,147	5.4%
Western	-	-	-	-
TOTAL	32,150	33,330	31,635	5.1%

AWEX WEEKLY WOOL PRICES

Regional Indicator	North	Wkly Chg	South	Wkly Chg	West	Wkly Chg
c/kg clean	1564	+21	1407	+18	-	-
MICRON PRICE GUIDES						
16.5	2824	+68	2876n	+84	-	-
17	2623	+55	2606n	+17	-	-
17.5	2402	+39	2387	+24	-	-
18	2203	+34	2198	+14	-	-
18.5	1995	+22	2011	+41	-	-
19	1820	+10	1819	+20	-	-
19.5	1658	+10	1669	+16	-	-
20	1510	+10	1488	-1	-	-
21	1380n	+24	1379	+5	-	-
22	-	-	1332n	+29	-	-
23	-	-	-	-	-	-
24	-	-	-	-	-	-
25	-	-	-	-	-	-
26	-	-	798n	+33	-	-
28	509n	+16	521	+23	-	-
30	-	-	420	+15	-	-
32	-	-	269n	+9	-	-
MC	978n	+2	951n	+5	-	-

AWEX EMI 2018/ 19 & 2019/ 20 Seasons vs Current
Currently: 1468 c/kg clean



UPCOMING AUCTION VOLUMES

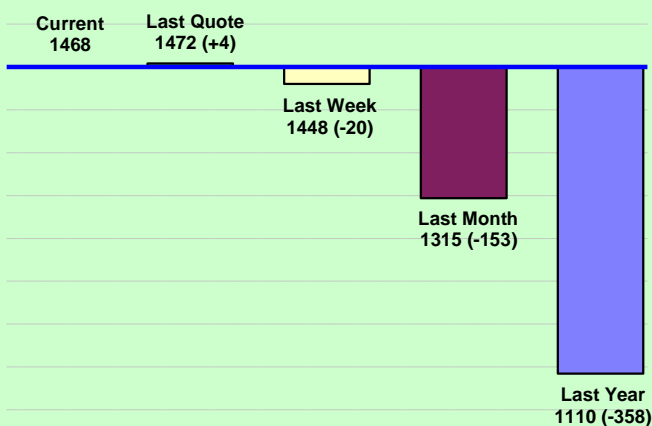
	29/06/2021	6/07/2021	13/07/2021
Northern	S53	S01	S02
Sydney	11,029	14,302	13,301
Southern	M53	M01	M02
Melbourne	21,835	24,060	21,761
Western	F53	F01	F02
Fremantle	11,542	9,740	6,850
Total	44,406	48,102	41,912

24 Jun 2021

Nutrien Wool Report

EMI 1468 NMI 1564 SMI 1407 WMI -

Average Nth-Sth MPG's as reported on 23 Jun 2021

AWEX Weekly Eastern Market Indicator
Quote Comparisons

AUD vs USD from 06-Jul-04 to 23-Jun-21



Micron	EMI	16.5	17	17.5	18	18.5	19	19.5	20	21	22	23	25	28	AUD
Current MPG's	1468	2850	2615	2395	2201	2003	1820	1664	1499	1380	1332	-	-	515	0.755
10 year Average	1349	1893	1817	1760	1697	1635	1575	1528	1487	1454	1422	1371	1223	1089	0.801
This time last year	1110	1691	1582	1477	1397	1329	1275	1237	1216	1196	-	-	-	551	0.694
10 year High	2116	3187	3007	2831	2683	2569	2462	2414	2391	2371	2350	2308	2153	1828	1.058
10 year Low	858	1267	1216	1177	1140	1060	997	947	905	884	863	953	941	402	0.557
% Reported above current	32%	8%	9%	15%	19%	23%	27%	33%	36%	45%	47%	0%	0%	94%	58%
Diff b/w High & Current	648	337	392	437	482	566	643	750	892	992	1018	-	-	1313	0.303
Diff b/w Ave & Current	119	957	798	634	503	368	244	135	12	-75	-90	-	-	-574	-0.046

Percentile Bands

95%	1953	2971	2754	2559	2430	2349	2294	2273	2255	2237	2220	2167	1830	1528	1.050
90%	1821	2608	2516	2450	2346	2226	2143	2068	2038	2022	1997	1801	1383	1280	1.038
80%	1545	2463	2337	2231	2118	1990	1847	1767	1698	1638	1512	1428	1246	1182	1.000
75%	1499	2327	2242	2159	2051	1882	1778	1696	1603	1507	1443	1368	1165	1146	0.974
60%	1298	1990	1885	1802	1744	1651	1557	1472	1404	1370	1332	1296	1154	1052	0.877
50%	1250	1809	1670	1597	1546	1491	1450	1404	1350	1311	1268	1232	1123	969	0.779
40%	1187	1584	1545	1521	1482	1441	1385	1345	1295	1261	1225	1186	1093	931	0.765
25%	1089	1497	1405	1361	1326	1292	1259	1226	1195	1174	1151	1125	1052	896	0.734
10%	1014	1365	1294	1266	1221	1188	1162	1134	1104	1098	1073	1046	977	849	0.697

Indicative Basis Contract Prices

Date	MPG	17	17.5	18	18.5	19	19.5	20	21	22	23	28
Jun-2021		2150	2030	1950	1800	1700	1575	1340	1300	1240	1200	470
Jul-2021		2150	2030	1950	1800	1700	1575	1340	1300	1240	1200	470
Aug-2021		2150	2030	1950	1800	1700	1575	1340	1300	1240	1200	470
Sep-2021		2120	2000	1920	1840	1740	1615	1360	1320	1260	1220	470
Oct-2021		2120	2000	1920	1840	1740	1615	1360	1320	1260	1220	470
Nov-2021		2120	2000	1920	1840	1740	1615	1360	1320	1260	1220	470
Dec-2021		2120	2000	1920	1820	1740	1615	1360	1320	1260	1220	470
Jan-2022		2130	2010	1930	1830	1750	1625	1370	1330	1270	1230	500
Feb-2022		2130	2010	1930	1830	1750	1625	1370	1330	1260	1230	500
Mar-2022		2120	2000	1920	1820	1740	1615	1360	1320	1250	1220	500
Apr-2022		2120	2000	1920	1820	1740	1615	1360	1320	1250	1220	500
May-2022		2120	2000	1920	1820	1740	1615	1360	1320	1250	1220	500
Jun-2022		2120	2000	1920	1820	1740	1615	1360	1320	1250	1220	500
Jul-2022		2080	1960	1880	1780	1700	1575	1340	1300	1230	1200	500
Aug-2022		2080	1960	1880	1780	1700	1575	1340	1300	1230	1200	500

Mulesing Status P/D's

µm	Non Mulsed	Pain Relief
18	+42	+2
19	+40	0
20	+30	0
21	0	0
23	0	0
25	+12	0

All prices on this sheet are listed in c/kg clean. MPG's are average North/South AWEX quoted figures. Mulesing P/D's quoted by AWEX. Basis Contract prices are published purely as a guide.

Please use above figures as a guide to submit your GTC or Target orders. Call 1800 629 396.