

Wool Weekly



Thursday, 1 July 2021

WOOL MARKET MOVEMENTS

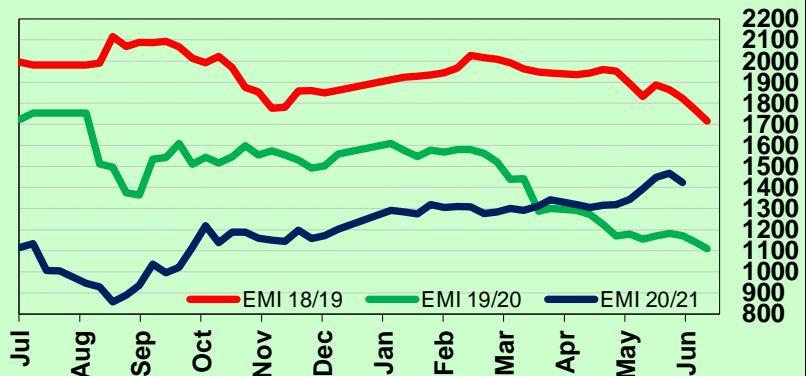
- The final sale of the 2020/21 wool selling season was characterised by reduced buyer sentiment compared with the previous series. This resulted in price falls across all market sectors except the Southern and Western oddments. The EMI lost 43 cents to end the season on 1,423c/kg clean, an increase of 313 cents from last season. The national offering increased to 42,847 bales, up 9,517 from last week, and the national pass in rate climbed to 21.6% (up 16.5%). All three centres will operate for the first sale of 2021/22 with 54,982 bales currently on offer.
- A softer market tone in Sydney this week as all market sectors trended downwards. All Merino fleece MPGs posted losses for the week, down 54 to 82 cents. Lots with favourable measurements were less affected on Tuesday and Wednesday with lots carrying low VM (<1%) and those declared Non mulesed also tended to hold their ground. Merino skirtings eased 25 to 45 cents for the week, although stylish, longer lots with low VM maintained last week's level. High VM lots with unfavourable additional measurements were discounted further on Wednesday. Well-prepared crossbred lots maintained last week's level; other lots fell 20 to 35 cents. Prices eased in the oddments sector. The Northern Regional Indicator closed at 1,522 c/kg clean, down 42 cents, and the Northern Merino Carding Indicator lost 13 cents to 965 c/kg clean. The Sydney pass in rate was 13.6% with 344 bales withdrawn.
- Seller resistance to the weaker market in Melbourne increased pass in rates. All Merino fleece MPGs lost ground on Tuesday, down 25 to 50 cents. This continued on Wednesday, except for the finer (<18.0 µm) MPGs rose 13 to 24 cents. Discounts for lots carrying high VM (>5%) pushed the Merino skirtings sector downwards on Tuesday as further discounts for lots with poor additional measurements occurred on Wednesday as the sector closed about 40 cents lower for the week. A small crossbred offering tended to maintain last week's price level and there was only minimal price movements in the oddments sector. The Southern Regional Indicator lost 46 cents to 1,361 c/kg clean while the Southern Merino Carding Indicator gained 4 cents to 955 c/kg clean. The Melbourne pass in rate was 22.5% with 805 bales withdrawn.
- The Fremantle market also trended lower, Merino fleece MPGs lost 35 to 59 cents for the week and Merino skirtings lost 55 to 90 cents. The Western oddments sector trended dearer, posting price gains on both days. The Western Regional Indicator lost 37 cents to 1,440 c/kg clean as the Western Merino Carding Indicator jumped 29 cents to 976 c/kg clean. The Fremantle pass in rate was 27.6% with 296 bales withdrawn.

AWEX WEEKLY WOOL PRICES

Regional Indicator	North	Wkly Chg	South	Wkly Chg	West	Wkly Chg
c/kg clean	1522	-42	1361	-46	1440	-37

MICRON PRICE GUIDES						
16.5	2770	-54	2854n	-22	-	-
17	2545	-78	2578	-28	-	-
17.5	2335	-67	2365	-22	-	-
18	2143	-60	2163	-35	2111n	-35
18.5	1918	-77	1918	-93	1927	-45
19	1738	-82	1758	-61	1755	-42
19.5	1598	-60	1596	-73	1596	-59
20	1438	-72	1423	-65	1423	-58
21	1302n	-78	1289	-90	1303n	-50
22	-	-	-	-	-	-
23	-	-	-	-	-	-
24	-	-	-	-	-	-
25	-	-	-	-	-	-
26	-	-	795	-3	-	-
28	490n	-19	500	-21	-	-
30	-	-	410	-10	-	-
32	-	-	269n	0	-	-
MC	965n	-13	955n	+4	976n	+29

AWEX EMI 2018/ 19 & 2019/ 20 Seasons vs Current
Currently: 1423 c/kg clean



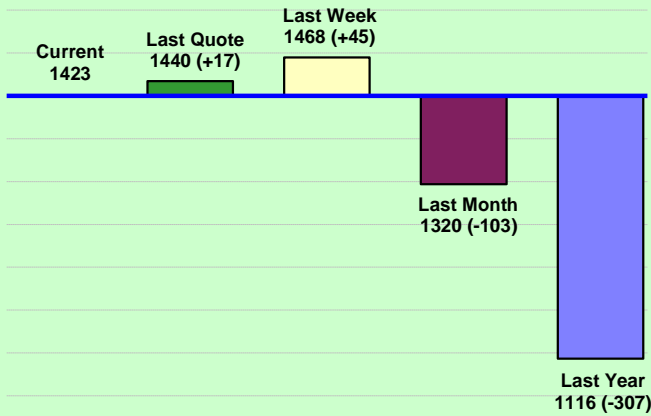
UPCOMING AUCTION VOLUMES

	6/07/2021	13/07/2021	20/07/2021
Northern	S01	S02	S03
Sydney	16,832	14,535	RECESS
Southern	M01	M02	M03
Melbourne	25,594	21,757	RECESS
Western	F01	F02	F03
Fremantle	12,556	6,850	RECESS
Total	54,982	43,142	RECESS

THIS WEEK'S SALES STATISTICS

Centre	Bales Originally	Bales Offered	Bales Sold	Pass in Rate
Northern	10,300	10,652	9,205	13.6%
Southern	19,348	20,904	16,199	22.5%
Western	6,750	11,291	8,178	27.6%
TOTAL	36,398	42,847	33,582	21.6%

AWEX Weekly Eastern Market Indicator Quote Comparisons



AUD vs USD from 06-Jul-04 to 30-Jun-21



Micron	EMI	16.5	17	17.5	18	18.5	19	19.5	20	21	22	23	25	28	AUD
Current MPG's	1423	2812	2562	2350	2153	1918	1748	1597	1431	1296	-	-	-	495	0.752
10 year Average	1349	1895	1819	1762	1698	1635	1576	1528	1487	1454	1422	1371	1223	1089	0.801
This time last year	1116	1696	1592	1493	1409	1343	1288	1243	1220	1197	-	-	-	564	0.692
10 year High	2116	3187	3007	2831	2683	2569	2462	2414	2391	2371	2350	2308	2153	1828	1.058
10 year Low	858	1267	1216	1177	1140	1060	997	947	905	884	863	953	941	402	0.557
% Reported above current	35%	8%	10%	17%	21%	27%	33%	36%	42%	55%	0%	0%	0%	96%	60%
Diff b/w High & Current	693	375	445	481	530	651	714	817	961	1076	-	-	-	1333	0.306
Diff b/w Ave & Current	74	917	743	588	455	283	172	69	-56	-158	-	-	-	-594	-0.049

Percentile Bands

95%	1953	2970	2753	2558	2430	2349	2294	2273	2255	2237	2220	2167	1830	1528	1.050
90%	1821	2613	2519	2450	2346	2226	2143	2068	2037	2022	1997	1801	1383	1280	1.038
80%	1545	2463	2343	2234	2121	1990	1847	1767	1698	1638	1512	1428	1246	1182	1.000
75%	1498	2333	2246	2160	2052	1883	1778	1694	1603	1506	1443	1368	1165	1146	0.974
60%	1299	1991	1885	1807	1748	1652	1560	1473	1404	1369	1332	1296	1154	1052	0.876
50%	1250	1817	1673	1598	1546	1491	1451	1405	1351	1311	1268	1232	1123	969	0.779
40%	1188	1584	1546	1521	1483	1441	1386	1348	1295	1261	1225	1186	1093	931	0.765
25%	1089	1498	1405	1361	1327	1292	1259	1226	1196	1174	1151	1125	1052	896	0.734
10%	1014	1366	1294	1266	1221	1188	1162	1134	1104	1098	1073	1046	977	849	0.697

Indicative Basis Contract Prices

Date	MPG	17	17.5	18	18.5	19	19.5	20	21	22	23	28
Jul-2021		2150	2030	1950	1800	1700	1575	1340	1300	1240	1200	470
Aug-2021		2150	2030	1950	1800	1700	1575	1340	1300	1240	1200	470
Sep-2021		2150	2030	1950	1800	1700	1575	1340	1300	1240	1200	520
Oct-2021		2120	2000	1920	1840	1740	1615	1340	1300	1240	1200	520
Nov-2021		2120	2000	1920	1840	1740	1615	1340	1300	1240	1200	500
Dec-2021		2120	2000	1920	1840	1740	1615	1340	1300	1240	1200	500
Jan-2022		2130	2010	1930	1830	1750	1625	1350	1310	1250	1210	500
Feb-2022		2130	2010	1930	1830	1750	1625	1350	1310	1250	1210	500
Mar-2022		2120	2000	1920	1820	1740	1615	1340	1300	1230	1200	500
Apr-2022		2120	2000	1920	1820	1740	1615	1340	1300	1230	1200	500
May-2022		2120	2000	1920	1820	1740	1615	1340	1300	1230	1200	500
Jun-2022		2120	2000	1920	1820	1740	1615	1340	1300	1230	1200	500
Jul-2022		2120	2000	1920	1820	1740	1615	1340	1300	1230	1200	500
Aug-2022		2080	1960	1880	1780	1700	1575	1340	1300	1230	1200	500
Sep-2022		2080	1960	1880	1780	1700	1575	1340	1300	1230	1200	500

Mulesing Status P/D's

µm	Non Mulsed	Pain Relief
18	+42	+2
19	+40	0
20	+30	0
21	0	0
23	0	0
25	+12	0

All prices on this sheet are listed in c/kg clean. MPG's are average North/South AWEX quoted figures. Mulesing P/D's quoted by AWEX. Basis Contract prices are published purely as a guide.

Please use above figures as a guide to submit your GTC or Target orders. Call 1800 629 396.