

Wool Weekly



Friday, 1 October 2021

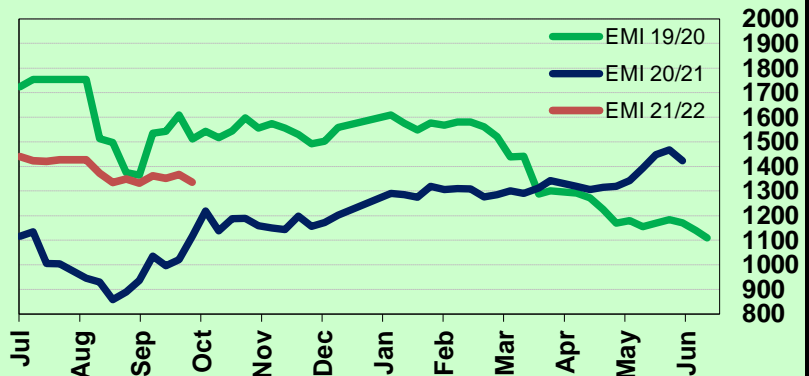
WOOL MARKET MOVEMENTS

- The Australian wool market stumbled this week, Merino fleece MPGs all retreated with the skirtings, crossbred and oddment sectors following. The EMI closed at 1,337 c/kg clean, down 31 cents and the national pass in rate jumped to 22.7% (up 13.3%, exd. the NZ component). There were some positive signs on Thursday as many MPGs recorded price gains, particularly the finer (<19.0 µm) range in Fremantle which gained up to 49 cents. Next week's offering increases to 42,119 bales.
- The Sydney Merino fleece market weakened on Wednesday. Prices for all MPGs receded 32 to 50 cents, before the sector stabilised on Thursday with only minor price movements. Merino skirtings lost up to 60 cents for the week, with high VM (>4%) lots most affected. Crossbreds lost 20 to 30 cents on Wednesday but were unchanged on Thursday. Finer (>19.5 µm) locks and broader (>17.5 µm) stains were out of favour, losing 30 cents for the week. The Northern Regional Indicator dropped 30 cents to 1,424 c/kg clean and the Northern Merino Carding Indicator lost 9 cents to 893c/kg clean. The Sydney pass in rate was 20.1% with 603 bales withdrawn.
- Melbourne's Merino fleece market trended lower on Wednesday, all MPGs lost ground lead by lots carrying high (>2%) VM levels. Stylish (MF4) lots with favourable additional measurements were keenly sought on Thursday but their price gains were counterbalanced by soft demand for less preferred lots. Merino skirtings lost ground on Wednesday, led by poorer style, broader (>18.0 µm) lots with high (>5%) VM before recovering some lost ground on Thursday. Low prices for crossbred lots prompted high pass in rates on Wednesday (21.6%) and Thursday (34.2%). Oddments followed the other sectors down on Wednesday before recovering some lost ground on Thursday. The Southern Regional Indicator closed at 1,279 c/kg clean, down 32 cents, and the Southern Merino Carding indicator fell 12 cents to 896 c/kg clean. The Melbourne pass in rate was 20.3% with 1,066 bales withdrawn.
- High pass in rates (42%) in Fremantle on Wednesday as sellers reacted to 45 to 60 cent reductions in Merino fleece prices. Demand picked up on Thursday, especially for the finer end of the range (<19.0 µm) with low VM (<2.0%). Merino skirtings trended downwards on Wednesday and were unchanged on Thursday, helped by a limited selection. The small selection of oddments lots eased on Wednesday (down 25 to 30 cents) but were unchanged on Thursday. The Western Regional Indicator lost 37 cents to 1,360 c/kg clean and the Western Merino Carding Indicator ended 23 cents lower at 886 c/kg clean. The Fremantle pass in rate was 33.1% with 209 bales withdrawn.

AWEX WEEKLY WOOL PRICES

Regional Indicator	North	Wkly Chg	South	Wkly Chg	West	Wkly Chg
c/kg clean	1424	-30	1279	-32	1360	-37
MICRON PRICE GUIDES						
16.5	2634	-30	2653n	-26	-	-
17	2407	-35	2447n	-61	-	-
17.5	2215	-33	2302	-28	-	-
18	2006	-37	2067	-26	2021n	-2
18.5	1839	-47	1852	-23	1828n	-34
19	1638	-41	1638	-49	1650	-19
19.5	1477	-56	1474	-55	1468	-58
20	1312	-50	1317	-49	1310	-45
21	1232n	-50	1217	-64	1244	-11
22	-	-	1210n	-34	-	-
23	-	-	-	-	-	-
24	-	-	-	-	-	-
25	-	-	-	-	-	-
26	-	-	731n	-57	-	-
28	427n	-15	423	-25	-	-
30	-	-	340n	-20	-	-
32	-	-	-	-	-	-
MC	893n	-9	896n	-12	886n	-23

AWEX EMI 2019/ 20 & 2020/ 21 Seasons vs Current
Currently: 1337 c/kg clean



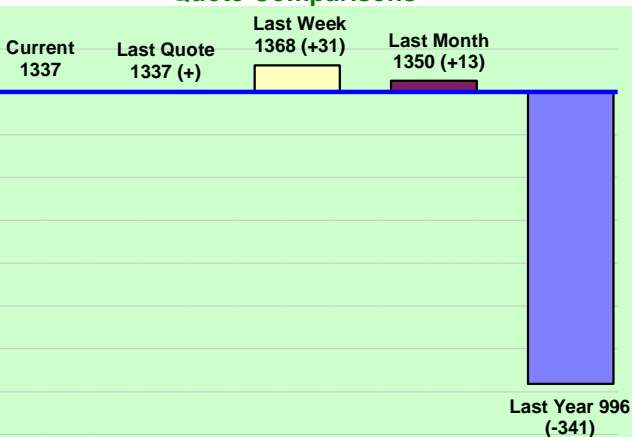
UPCOMING AUCTION VOLUMES

	6/10/2021	13/10/2021	20/10/2021
Northern	S14	S15	S16
Sydney	12,119	10,440	11,760
Southern	M14	M15	M16
Melbourne	23,249	20,968	22,310
Western	F14	F15	F16
Fremantle	6,751	8,250	8,200
Total	42,119	39,658	42,270

THIS WEEK'S SALES STATISTICS

Centre	Bales Originally	Bales Offered	Bales Sold	Pass in Rate
Northern	10,580	11,604	9,271	20.1%
Southern	20,772	20,389	16,259	20.3%
Western	7,400	7,536	5,040	33.1%
TOTAL	38,752	39,529	30,570	22.7%

AWEX Weekly Eastern Market Indicator Quote Comparisons



AUD vs USD from 06-Jul-04 to 30-Sep-21



Micron	EMI	16.5	17	17.5	18	18.5	19	19.5	20	21	22	23	25	28	AUD
Current MPG's	1337	2644	2427	2259	2037	1846	1638	1476	1315	1225	1210	-	-	425	0.720
10 year Average	1349	1913	1833	1774	1707	1641	1578	1528	1484	1450	1419	1371	1223	1089	0.800
This time last year	996	1671	1582	1479	1373	1257	1148	1077	1037	1007	-	-	-	467	0.712
10 year High	2116	3187	3007	2831	2683	2569	2462	2414	2391	2371	2350	2308	2153	1828	1.058
10 year Low	858	1267	1216	1177	1140	1060	997	947	905	884	863	953	941	811	0.557
% Reported above current	39%	11%	18%	21%	28%	32%	38%	45%	59%	68%	64%	0%	0%	0%	76%
Diff b/w High & Current	779	544	580	573	646	723	824	938	1077	1147	1140	-	-	1403	0.338
Diff b/w Ave & Current	-12	731	594	485	330	204	60	-53	-170	-225	-209	-	-	-664	-0.080

Percentile Bands

95%	1951	2965	2748	2552	2426	2347	2294	2272	2254	2236	2219	2167	1830	1528	1.050
90%	1819	2626	2523	2447	2339	2224	2136	2064	2025	1987	1980	1801	1383	1280	1.037
80%	1540	2497	2371	2243	2121	1977	1844	1762	1683	1628	1503	1428	1246	1182	1.000
75%	1490	2370	2273	2181	2053	1882	1774	1685	1599	1501	1440	1368	1165	1146	0.967
60%	1305	2002	1916	1867	1775	1674	1573	1477	1403	1363	1324	1296	1154	1052	0.869
50%	1258	1838	1687	1605	1554	1497	1459	1412	1352	1307	1264	1232	1123	969	0.776
40%	1191	1588	1557	1525	1490	1444	1389	1353	1306	1262	1225	1186	1093	931	0.763
25%	1091	1502	1408	1364	1333	1296	1262	1234	1201	1178	1152	1125	1052	896	0.732
10%	1015	1372	1297	1267	1223	1190	1165	1135	1113	1098	1075	1046	977	849	0.699

Indicative Basis Contract Prices

Date	MPG	17	17.5	18	18.5	19	19.5	20	21	22	23	28
Oct-2021		2075	1955	1875	1725	1625	1500	1260	1220	1160	1120	400
Nov-2021		2075	1955	1875	1725	1625	1500	1260	1220	1160	1120	400
Dec-2021		2080	1960	1880	1730	1630	1505	1260	1220	1160	1120	400
Jan-2022		2090	1970	1890	1740	1640	1515	1270	1230	1170	1130	400
Feb-2022		2100	1980	1900	1750	1650	1525	1280	1240	1180	1140	400
Mar-2022		2110	1990	1910	1760	1660	1535	1280	1240	1180	1140	400
Apr-2022		2040	1920	1840	1740	1660	1535	1280	1240	1180	1140	400
May-2022		2040	1920	1840	1740	1660	1535	1280	1240	1180	1140	400
Jun-2022		2040	1920	1840	1740	1660	1535	1280	1240	1170	1140	400
Jul-2022		2040	1920	1840	1740	1660	1535	1280	1240	1170	1140	400
Aug-2022		2040	1920	1840	1740	1660	1535	1280	1240	1170	1140	400
Sep-2022		2040	1920	1840	1740	1660	1535	1280	1240	1170	1140	400
Oct-2022		2040	1920	1840	1740	1660	1535	1280	1240	1170	1140	400
Nov-2022		2040	1920	1840	1740	1660	1535	1280	1240	1170	1140	400
Dec-2022		2040	1920	1840	1740	1660	1535	1280	1240	1170	1140	400

Mulesing Status P/D's

µm	Non Mulsed	Pain Relief
18	+32	+10
19	+26	+11
20	+19	+11
21	+19	+5
23	0	0
25	0	+4

All prices on this sheet are listed in c/kg clean. MPG's are average North/South AWEX quoted figures. Mulesing P/D's quoted by AWEX. Basis Contract prices are published purely as a guide.

Please use above figures as a guide to submit your GTC or Target orders. Call 1800 629 396.