

# Wool Weekly



Friday, 5 November 2021

## WOOL MARKET MOVEMENTS

- A 2021/22 seasonal record price was paid in Sydney this week - a 11.7 µm bale branded SUPERIOR ACE IN DIAMOND yielding 75.8% made 21.500 cents per kg at the fall of the Nutrien gavel. Overall, the EMI rose 7 cents to 1,340 c/kg clean, the national offering contracted to 39,360 bales with 9.7% (excl. NZ lots) passed in. A rising Crossbred sector was welcomed by growers.
- Mixed results in the Sydney Merino fleece sector, prices rose in the 16.5 µm (up 5 cents) and >18.5 µm and broader (up 9 to 35 cents) MPG's but fell in the 17 to 18 µm (down 1 to 30 cents) MPG's on Wednesday. All MPG's lost ground on Thursday (down 5 to 40 cents) except the 21 µm which was unchanged. Lots with low VM (<1.5%) and favourable additional measurements tended to maintain their value. Buyers sought out quality Merino skirtings, well measured lots with low VM (<3%) gained 20 to 30 cents. The crossbred sector had a positive week, the 26 µm MPG jumped 64 cents and the 28 µm MPG rose 28 cents. The oddment sector gained up to 20 cents on Wednesday and was unchanged on Thursday. The Northern Regional Indicator closed at 1,416 c/kg clean down 4 cents while the Northern Merino Carding Indicator rose 15 cents to 844 c/kg clean. The Sydney pass in rate was 8.5% with 391 bales withdrawn.
- Broader (≥ 19.5 µm) MPG's gained ground (up 30 to 40 cents) in the Melbourne Merino fleece sector on Wednesday as finer types retreated (down 45 cents). Fine, non-Mulesed lots were keenly sought on Wednesday and held their value as all MPG's, except the 20 µm and 21 µm, lost ground. Merino skirtings started the week strongly and consolidated on Thursday. The crossbred sector recorded price gains with finer MPG's leading the way. Oddments with low yield and high (>2%) VM were out of favour on Wednesday, other lots gained ground and held that level on Thursday. The Southern Regional Indicator rose 14 cents to 1,289 c/kg clean and the Southern Merino Carding Indicator also gained 14 cents to 866 c/kg clean. The Melbourne pass in rate was 9.4% with 1,034 bales withdrawn.
- The Fremantle fleece market surged upwards on Wednesday; the Western Regional Indicator rose 36 cents. All Merino fleece MPG's, except the 18 µm (down 21 cents), gained ground (22 to 54 cents). Minor price changes occurred on Thursday. Merino skirtings and oddments sectors trod the same path as the fleece sector this week, both gained ground on Wednesday (selected locks rose 100 cents) and were unchanged on Thursday. The Western Regional Indicator rose 34 cents to 1,402 c/kg clean and the Western Merino Carding Indicator rose 23 cents to 868 c/kg clean. The Fremantle pass in rate was 13.1% with 910 bales withdrawn.

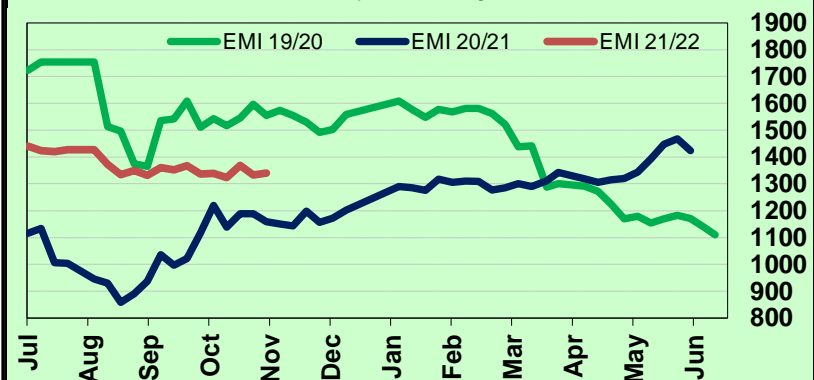
## AWEX WEEKLY WOOL PRICES

Regional Indicator	North	Wkly Chg	South	Wkly Chg	West	Wkly Chg
c/kg clean	1416	-4	1289	+14	1402	+34

MICRON PRICE GUIDES						
16.5	2620	-13	2563n	-48	-	-
17	2419	-20	2378	-59	-	-
17.5	2212	-53	2262	-36	-	-
18	1997	-61	2013	-71	1992n	-31
18.5	1812	-28	1821	-33	1850n	+26
19	1640	-27	1648	-11	1642	+16
19.5	1484	-9	1496	+14	1487	+16
20	1364	+30	1363	+45	1356	+53
21	1312n	+32	1317	+43	1289n	+30
22	-	-	-	-	-	-
23	-	-	-	-	-	-
24	-	-	-	-	-	-
25	-	-	-	-	-	-
26	725n	+64	720	+48	-	-
28	430n	+28	440	+37	-	-
30	-	-	370	+40	-	-
32	-	-	253n	+35	-	-
MC	844n	+15	866n	+14	868n	+23

AWEX EMI 2019/ 20 & 2020/ 21 Seasons vs Current  
Currently: 1340 c/kg clean



## UPCOMING AUCTION VOLUMES

	10/11/2021	17/11/2021	24/11/2021
Northern	S19	S20	S21
Sydney	11,090	12,125	10,610
Southern	M19	M20	M21
Melbourne	22,891	24,630	22,495
Western	F19	F20	F21
Fremantle	6,761	7,600	7,730
<b>Total</b>	<b>40,742</b>	<b>44,355</b>	<b>40,835</b>

## THIS WEEK'S SALES STATISTICS

Centre	Bales Originally	Bales Offered	Bales Sold	Pass in Rate
Northern	12,050	10,632	9,729	8.5%
Southern	23,420	22,331	20,232	9.4%
Western	7,640	5,331	4,633	13.1%
<b>TOTAL</b>	<b>43,110</b>	<b>38,294</b>	<b>34,594</b>	<b>9.7%</b>

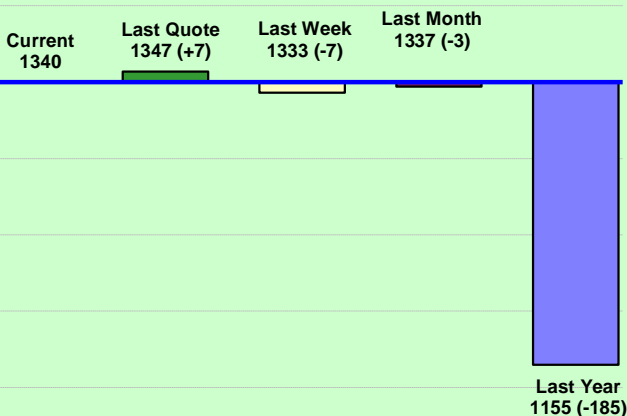
# Nutrien Wool Report

EMI 1340 NMI 1416 SMI 1289 WMI 1402



Average Nth-Sth MPG's as reported on 4 Nov 2021

## AWEX Weekly Eastern Market Indicator Quote Comparisons



## AUD vs USD from 06-Jul-04 to 04-Nov-21



Micron	EMI	16.5	17	17.5	18	18.5	19	19.5	20	21	22	23	25	28	AUD
Current MPG's	1340	2592	2399	2237	2005	1817	1644	1490	1364	1315	-	-	-	435	0.746
10 year Average	1349	1921	1840	1779	1710	1643	1579	1528	1483	1448	1417	1371	1223	1089	0.799
This time last year	1188	1951	1809	1701	1579	1481	1384	1332	1265	1208	-	-	-	619	0.718
10 year High	2116	3187	3007	2831	2683	2569	2462	2414	2391	2371	2350	2308	2153	1828	1.058
10 year Low	858	1267	1216	1177	1140	1060	997	947	905	884	863	953	941	811	0.557
% Reported above current	39%	14%	20%	23%	29%	35%	37%	42%	50%	50%	0%	0%	0%	0%	62%
Diff b/w High & Current	776	596	608	594	678	752	818	924	1028	1057	-	-	-	1393	0.312
Diff b/w Ave & Current	-9	671	558	458	295	173	65	-38	-119	-133	-	-	-	-654	-0.053

### Percentile Bands

95%	1950	2965	2748	2552	2426	2346	2294	2271	2253	2236	2219	2167	1830	1528	1.050
90%	1818	2637	2521	2445	2335	2221	2131	2058	2018	1980	1968	1801	1383	1280	1.037
80%	1537	2513	2380	2251	2121	1973	1841	1759	1678	1624	1501	1428	1245	1181	0.999
75%	1481	2385	2282	2191	2057	1882	1772	1680	1595	1500	1437	1368	1162	1146	0.965
60%	1307	2005	1929	1882	1787	1678	1580	1477	1402	1362	1321	1296	1154	1051	0.859
50%	1263	1851	1690	1612	1558	1499	1463	1417	1352	1306	1263	1232	1123	969	0.776
40%	1193	1591	1562	1526	1492	1446	1391	1356	1307	1262	1225	1186	1092	931	0.762
25%	1092	1504	1411	1365	1334	1299	1265	1234	1205	1179	1152	1125	1049	896	0.732
10%	1015	1374	1298	1267	1225	1191	1166	1136	1113	1099	1076	1046	968	849	0.700

### Indicative Basis Contract Prices

Date	MPG	17	17.5	18	18.5	19	19.5	20	21	22	23	28
Nov-2021		2190	2070	1990	1720	1620	1495	1250	1210	1150	1110	380
Dec-2021		2190	2070	1990	1730	1630	1505	1250	1210	1150	1110	380
Jan-2022		2190	2070	1990	1730	1630	1505	1260	1230	1170	1130	380
Feb-2022		2150	2030	1950	1760	1660	1535	1260	1260	1200	1160	380
Mar-2022		2150	2030	1950	1760	1660	1535	1260	1260	1200	1160	380
Apr-2022		2150	2030	1950	1760	1660	1535	1260	1260	1200	1160	380
May-2022		2150	2030	1950	1740	1660	1535	1260	1260	1200	1160	380
Jun-2022		2230	2110	2030	1740	1660	1535	1260	1260	1200	1160	380
Jul-2022		2240	2120	2040	1740	1660	1535	1260	1260	1190	1160	380
Aug-2022		2250	2130	2050	1740	1660	1535	1260	1260	1190	1160	380
Sep-2022		2250	2130	2050	1740	1660	1535	1260	1260	1190	1160	380
Oct-2022		2040	1920	1840	1740	1660	1535	1260	1260	1190	1160	380
Nov-2022		2040	1920	1840	1740	1660	1535	1260	1260	1190	1160	380
Dec-2022		2040	1920	1840	1740	1660	1535	1260	1260	1190	1160	380
Jan-2023		2040	1920	1840	1740	1660	1535	1260	1260	1190	1160	380

### Mulesing Status P/D's

µm	Non Mulsed	Pain Relief
18	+32	+10
19	+26	+11
20	+19	+11
21	+19	+5
23	0	0
25	0	+4

All prices on this sheet are listed in c/kg clean. MPG's are average North/South AWEX quoted figures. Mulesing P/D's quoted by AWEX. Basis Contract prices are published purely as a guide.

Please use above figures as a guide to submit your GTC or Target orders. Call 1800 629 396.