

# Wool Weekly



Friday, 19 November 2021

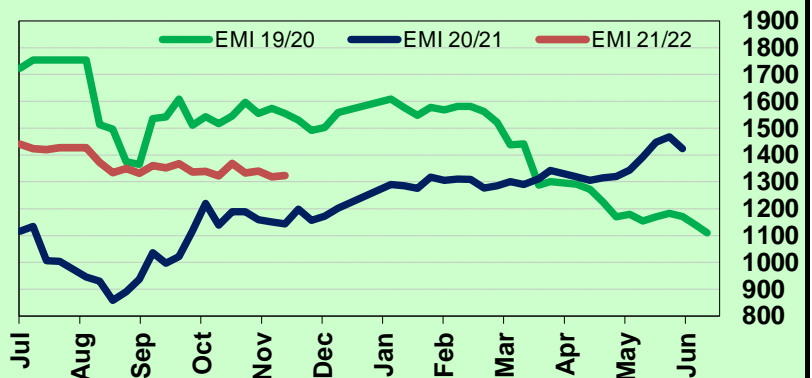
## WOOL MARKET MOVEMENTS

- Eased COVID-19 restrictions allowed a 3-day sale in Melbourne which increased pushed the national offering up to 40,266 bales with a further 1,282 NZ bales on offer. The EMI gained 5 cents to close at 1,324 c/kg clean, pushed upwards by medium micron Merino fleece lots, as the national pass in rate fell to 9.3% (down 5%). Oddments had a strong week, pushing each of the carding indicators into positive territory. A similar sized offering (41,363) is expected next week.
- A positive week for the Merino fleece sector in Sydney as all MPGs posted price increases, 11 to 43 cents. Most of the price gains were realised on Tuesday, with minor price adjustments on Wednesday. Well measured Merino skirtings with low VM (<3.5%) gained 10-20 cents on Tuesday, with the sector unchanged on Wednesday. Crossbreds softened, down 5 - 10 cents, on Tuesday and maintained that level. Finer locks (<17.0 µm) and stains (<16.5 µm) rose up to 50 cents on Tuesday before the Oddments sector firmed on Wednesday. The Northern Regional Indicator gained 13 cents to 1,407 c/kg clean and the Northern Merino Carding Indicator rose 4 cents to 862 c/kg clean. The Sydney pass in rate was 7.4% with 175 bales withdrawn.
- A three-day sale in Melbourne produced mixed results in the Merino fleece sector. Finer MPGs (16.5 to 18.5 µm) ended the week in negative territory (down 7 to 58 cents) with the 16.5 and 17.0 µm lots most affected. Broader MPGs gained ground, up 10 to 19 cents. Significant premiums, up to 250 cents, were paid for 'Speciality Non Mulesed' lots on Thursday. Merino skirtings strengthened on Tuesday, recorded mixed results on Wednesday and were unchanged on Thursday. The crossbred sector recovered early losses by Tuesday's close, with few further price changes to weeks end. Merino locks were in favour on Tuesday and Wednesday (up 40 cents) with Merino lambs rising 20 cents on Thursday. The Southern Regional Indicator lost 1 cent to 1,268 c/kg clean, while the Southern Merino Carding Indicator jumped 26 cents to 895 c/kg clean. The Melbourne pass in rate was 9.8% with 1,182 bales withdrawn.
- Fremantle's Merino fleece sector followed Sydney's lead. All MPGs rose on Tuesday (up 11 to 30 cents), with minor price falls on Wednesday (down 1 to 11 cents). Merino skirtings had a strong week, finer (<19.5 µm) lots rose up to 45 cents. Locks recovered Tuesday's early losses with the oddments sector strengthened as the sale progressed. The Western Regional Indicator jumped 15 cents to 1,393 c/kg clean with the Western Merino Carding Indicator rising 10 cents to 858 c/kg clean. The Fremantle pass in rate was 11.0% with 1,111 bales withdrawn.

## AWEX WEEKLY WOOL PRICES

Regional Indicator	North	Wkly Chg	South	Wkly Chg	West	Wkly Chg
c/kg clean	1407	+13	1268	-1	1393	+15
MICRON PRICE GUIDES						
16.5	2554	+19	2475n	-58	-	-
17	2370	+32	2330n	-34	-	-
17.5	2174	+15	2170n	-35	-	-
18	1980	+30	1974	-3	1975	+28
18.5	1805	+43	1779	-7	1831	+16
19	1633	+20	1624	+10	1628	+24
19.5	1489	+28	1469	+16	1478	+18
20	1365	+31	1344	+10	1338	+11
21	1298	+11	1296	+19	1285	+11
22	-	-	1275n	+13	-	-
23	-	-	-	-	-	-
24	-	-	-	-	-	-
25	-	-	-	-	-	-
26	-	-	725	0	-	-
28	407	-11	410	-5	-	-
30	-	-	340	-8	-	-
32	-	-	240n	-	-	-
MC	862	+4	895n	+26	858	+10

AWEX EMI 2019/ 20 & 2020/ 21 Seasons vs Current  
Currently: 1324 c/kg clean



## UPCOMING AUCTION VOLUMES

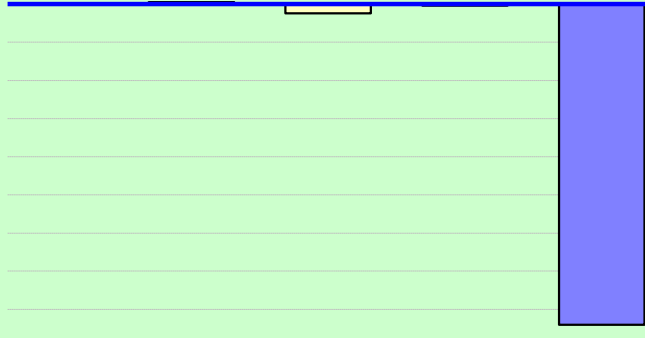
	24/11/2021	1/12/2021	8/12/2021
Northern	S21	S22	S23
Sydney	10,212	11,690	10,280
Southern	M21	M22	M23
Melbourne	22,958	21,830	22,390
Western	F21	F22	F23
Fremantle	8,193	7,660	7,770
<b>Total</b>	<b>41,363</b>	<b>41,180</b>	<b>40,440</b>

## THIS WEEK'S SALES STATISTICS

Centre	Bales Originally	Bales Offered	Bales Sold	Pass in Rate
Northern	12,150	11,451	10,606	7.4%
Southern	24,180	22,130	19,972	9.8%
Western	7,600	6,685	5,950	11.0%
<b>TOTAL</b>	<b>43,930</b>	<b>40,266</b>	<b>36,528</b>	<b>9.3%</b>

### AWEX Weekly Eastern Market Indicator Quote Comparisons

Current	Last Quote	Last Week	Last Month
1324	1325 (+1)	1319 (-5)	1323 (-1)



### AUD vs USD from 06-Jul-04 to 18-Nov-21



Micron	EMI	16.5	17	17.5	18	18.5	19	19.5	20	21	22	23	25	28	AUD
<b>Current MPG's</b>	1324	2475	2330	2170	1974	1779	1624	1469	1344	1296	1275	-	-	410	0.727
<b>10 year Average</b>	1349	1924	1843	1781	1712	1644	1579	1528	1482	1447	1416	1371	1223	1088	0.799
<b>This time last year</b>	1159	1948	1815	1725	1574	1464	1381	1298	1229	1181	-	-	-	560	0.729
<b>10 year High</b>	2116	3187	3007	2831	2683	2569	2462	2414	2391	2371	2350	2308	2153	1828	1.058
<b>10 year Low</b>	858	1267	1216	1177	1140	1060	997	947	905	884	863	953	941	811	0.557
<b>% Reported above current</b>	41%	21%	23%	27%	31%	37%	39%	47%	54%	54%	51%	0%	0%	0%	72%
<b>Diff b/w High &amp; Current</b>	792	712	677	661	709	790	838	945	1047	1075	1075	-	-	1418	0.331
<b>Diff b/w Ave &amp; Current</b>	-25	551	487	389	262	135	45	-59	-138	-151	-141	-	-	-678	-0.072

#### Percentile Bands

<b>95%</b>	1950	2965	2748	2551	2425	2346	2293	2270	2253	2236	2219	2167	1830	1527	1.050
<b>90%</b>	1818	2636	2521	2445	2334	2218	2129	2056	2015	1977	1961	1801	1383	1279	1.037
<b>80%</b>	1536	2516	2378	2251	2120	1972	1839	1759	1675	1616	1499	1428	1245	1181	0.999
<b>75%</b>	1479	2396	2291	2191	2056	1881	1770	1678	1593	1499	1436	1368	1162	1146	0.964
<b>60%</b>	1309	2020	1938	1892	1794	1681	1582	1477	1401	1361	1321	1296	1154	1051	0.858
<b>50%</b>	1263	1853	1692	1618	1562	1502	1467	1420	1352	1305	1264	1232	1123	968	0.775
<b>40%</b>	1193	1592	1562	1527	1493	1447	1392	1356	1308	1262	1228	1186	1092	929	0.762
<b>25%</b>	1092	1504	1412	1367	1335	1299	1266	1235	1206	1180	1153	1125	1049	896	0.732
<b>10%</b>	1015	1375	1298	1268	1227	1191	1166	1136	1113	1100	1077	1046	968	849	0.700

#### Indicative Basis Contract Prices

Date	MPG	17	17.5	18	18.5	19	19.5	20	21	22	23	28
Nov-2021		2000	1880	1800	1720	1620	1495	1270	1230	1170	1130	380
Dec-2021		2000	1880	1800	1720	1620	1495	1280	1240	1180	1140	380
Jan-2022		2000	1880	1800	1720	1620	1495	1260	1230	1170	1130	380
Feb-2022		2000	1880	1800	1720	1620	1495	1260	1320	1260	1220	380
Mar-2022		2000	1880	1800	1720	1620	1495	1260	1320	1260	1220	380
Apr-2022		2000	1880	1800	1720	1620	1495	1260	1270	1210	1170	380
May-2022		2000	1880	1800	1700	1620	1495	1260	1320	1260	1220	380
Jun-2022		2000	1880	1800	1700	1620	1495	1260	1270	1210	1170	380
Jul-2022		2000	1880	1800	1700	1620	1495	1260	1270	1200	1170	380
Aug-2022		2000	1880	1800	1700	1620	1495	1260	1270	1200	1170	380
Sep-2022		2000	1880	1800	1700	1620	1495	1260	1270	1200	1170	380
Oct-2022		2000	1880	1800	1700	1620	1495	1260	1270	1200	1170	380
Nov-2022		2000	1880	1800	1700	1620	1495	1260	1270	1200	1170	380
Dec-2022		2000	1880	1800	1700	1620	1495	1260	1270	1200	1170	380
Jan-2023		2000	1880	1800	1700	1620	1495	1260	1270	1200	1170	380

#### Mulesing Status P/D's

µm	Non Mulsed	Pain Relief
18	+32	+10
19	+26	+11
20	+19	+11
21	+19	+5
23	0	0
25	0	+4

All prices on this sheet are listed in c/kg clean. MPG's are average North/South AWEX quoted figures. Mulesing P/D's quoted by AWEX. Basis Contract prices are published purely as a guide.

Please use above figures as a guide to submit your GTC or Target orders. Call 1800 629 396.