

Wool Weekly



Friday, 25 February 2022

WOOL MARKET MOVEMENTS

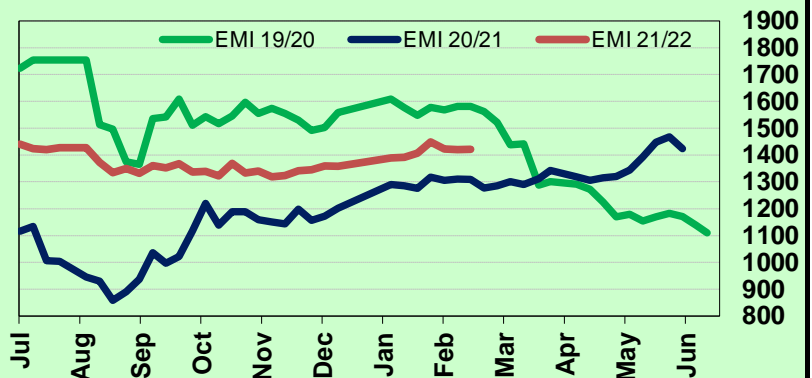
- Buyer demand for stylish well measured lots with low (< 1.0%) VM underpinned the Australian market this week and contributed to the EMI closing at 1,421 c/kg clean up 1 cent. Pre-sale withdrawals (3.6%) reduced the offering to 46,388 bales (down 2,652 bales) and the overall pass in rate rose by 2.2% to 11.8%. Nutrien client HILLCRESTON/BIGGA achieved 1PP certification for 4 separate lines of their superfine clip reflecting their high clip preparation standards, exceptional style and quality.
- Another sluggish start for the Sydney Merino fleece sector with broader (> 18.0 µm) MPGs losing ground on Tuesday (down 3 to 15 cents) as finer MPGs recorded small price gains. Wednesday ended on a positive note as all MPGs recorded price rises. Quality dictated value in the Merino skirtings sector as poorly measured lots with high VM (>3%) dropped 20 to 30 cents. Other skirtings were unchanged. A small crossbred offering was largely unchanged, finer (<26.5 µm) lots were 10 cents cheaper. No change to the oddments sector. The Northern Regional Indicator closed at 1,513 c/kg clean, up 2 cents and the Northern Merino Carding Indicator gained 1 cent to 1,002 c/kg clean. The Sydney pass in rate was 1.6% with 204 bales withdrawn.
- Well measured, stylish Merino fleece lots with low VM attracted buyer attention in Melbourne and trended upwards with mixed results for other types and descriptions. The Merino skirtings sector had a stellar week with strong competition across the offering. Mixed results in the crossbred sector which ended the week with small price reductions. Oddments began the week unchanged, before strengthening on Wednesday (led by Merino Locks & Crutchings with higher yields) and retaining that level on Thursday. The Southern Merino Indicator added 1 cent to 1,360 c/kg clean while the Southern Merino Carding Indicator lost 2 cents to 996 c/kg clean. The Melbourne pass in rate was 8.9% with 842 bales withdrawn.
- Fremantle's Merino fleece sector dipped lower on Tuesday, with more than 23% of lots passed in, before rebounding strongly on Wednesday. The 21 µm MPG ended the week unchanged, other MPGs gained between 2 and 26 cents. Merino skirtings were largely unchanged on Tuesday before jumping upwards on Wednesday (10 to 30 cents dearer). The oddments sector softened on Tuesday before locks and crutchings gained up to 20 cents on Wednesday and stains jumped up to 40 cents higher. The Western Regional Indicator rose 8 cents to 1,459 c/kg clean as the Western Merino Carding Indicator lost 5 cents to 937 c/kg clean. The Fremantle pass in rate was 19.2% with 686 bales withdrawn.

AWEX WEEKLY WOOL PRICES

| Regional Indicator | North | Wkly Chg | South | Wkly Chg | West | Wkly Chg |
|---------------------|-------|----------|-------|----------|-------|----------|
| c/kg clean | 1513 | +2 | 1360 | +1 | 1459 | +8 |
| MICRON PRICE GUIDES | | | | | | |
| 16.5 | 2820 | +18 | - | - | - | - |
| 17 | 2638 | +17 | 2701n | +1 | - | - |
| 17.5 | 2404 | +12 | 2457 | +21 | - | - |
| 18 | 2155 | +10 | 2185 | +12 | 2120n | +22 |
| 18.5 | 1915 | +8 | 1933 | +14 | 1934n | +26 |
| 19 | 1709 | 0 | 1708 | -3 | 1698 | +20 |
| 19.5 | 1541 | -2 | 1554 | +7 | 1544 | +10 |
| 20 | 1422 | -5 | 1434 | +2 | 1411 | +2 |
| 21 | 1349n | 0 | 1352n | -16 | 1338 | 0 |
| 22 | - | - | 1313n | -4 | - | - |
| 23 | - | - | - | - | - | - |
| 24 | - | - | - | - | - | - |
| 25 | - | - | - | - | - | - |
| 26 | 728n | - | 734n | -6 | - | - |
| 28 | 417n | +3 | 420 | 0 | - | - |
| 30 | - | - | 353n | -2 | - | - |
| 32 | - | - | - | - | - | - |
| MC | 1002n | +1 | 996 | -2 | 937n | -5 |

AWEX EMI 2019/20 & 2020/21 Seasons vs Current

Currently: 1421 c/kg clean



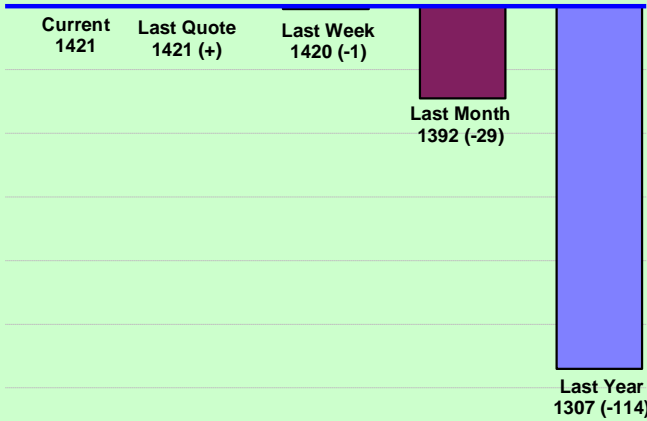
UPCOMING AUCTION VOLUMES

| | 2/03/2022 | 9/03/2022 | 16/03/2022 |
|--------------|---------------|---------------|---------------|
| Northern | S35 | S36 | S37 |
| Sydney | 14,923 | 12,850 | 11,090 |
| Southern | M35 | M36 | M37 |
| Melbourne | 26,295 | 21,100 | 23,177 |
| Western | F35 | F36 | F37 |
| Fremantle | 10,077 | 9,300 | 9,150 |
| Total | 51,295 | 43,250 | 43,417 |

THIS WEEK'S SALES STATISTICS

| Centre | Bales Originally | Bales Offered | Bales Sold | Pass in Rate |
|--------------|------------------|---------------|---------------|--------------|
| Northern | 11,330 | 12,675 | 11,200 | 11.6% |
| Southern | 20,230 | 23,320 | 21,233 | 8.9% |
| Western | 9,200 | 8,983 | 7,260 | 19.2% |
| TOTAL | 40,760 | 44,978 | 39,693 | 11.8% |

AWEX Weekly Eastern Market Indicator Quote Comparisons



AUD vs USD from 06-Jul-04 to 24-Feb-22



| Micron | EMI | 16.5 | 17 | 17.5 | 18 | 18.5 | 19 | 19.5 | 20 | 21 | 22 | 23 | 25 | 28 | AUD |
|------------------------------------|------|------|------|------|------|------|------|------|------|------|------|------|------|------|--------|
| Current MPG's | 1421 | - | 2701 | 2457 | 2185 | 1933 | 1708 | 1554 | 1434 | 1352 | 1313 | - | - | 420 | 0.718 |
| 10 year Average | 1350 | 1944 | 1861 | 1796 | 1722 | 1651 | 1583 | 1528 | 1480 | 1444 | 1414 | 1371 | 1223 | 1086 | 0.797 |
| This time last year | 1306 | 2238 | 2098 | 1974 | 1833 | 1701 | 1599 | 1483 | 1400 | 1296 | - | - | - | 571 | 0.796 |
| 10 year High | 2116 | 3187 | 3007 | 2831 | 2683 | 2569 | 2462 | 2414 | 2391 | 2371 | 2350 | 2308 | 2153 | 1828 | 1.058 |
| 10 year Low | 858 | 1267 | 1216 | 1177 | 1140 | 1060 | 997 | 947 | 905 | 884 | 863 | 953 | 941 | 811 | 0.557 |
| % Reported above current | 33% | 0% | 7% | 11% | 19% | 26% | 34% | 35% | 40% | 46% | 48% | 0% | 0% | 0% | 77% |
| Diff b/w High & Current | 695 | - | 306 | 374 | 498 | 636 | 754 | 860 | 957 | 1019 | 1037 | - | - | 1408 | 0.340 |
| Diff b/w Ave & Current | 71 | - | 840 | 661 | 463 | 282 | 125 | 26 | -46 | -92 | -101 | - | - | -666 | -0.078 |

Percentile Bands

| | | | | | | | | | | | | | | | |
|------------|------|------|------|------|------|------|------|------|------|------|------|------|------|------|-------|
| 95% | 1947 | 2964 | 2746 | 2546 | 2424 | 2345 | 2292 | 2269 | 2251 | 2233 | 2218 | 2167 | 1830 | 1524 | 1.050 |
| 90% | 1815 | 2656 | 2532 | 2443 | 2331 | 2215 | 2125 | 2053 | 2004 | 1967 | 1950 | 1801 | 1383 | 1278 | 1.036 |
| 80% | 1531 | 2534 | 2402 | 2262 | 2127 | 1962 | 1834 | 1753 | 1664 | 1592 | 1486 | 1428 | 1246 | 1181 | 0.996 |
| 75% | 1457 | 2454 | 2323 | 2216 | 2070 | 1887 | 1764 | 1674 | 1582 | 1490 | 1431 | 1368 | 1165 | 1145 | 0.956 |
| 60% | 1314 | 2044 | 1982 | 1928 | 1829 | 1701 | 1596 | 1483 | 1403 | 1359 | 1321 | 1296 | 1154 | 1048 | 0.817 |
| 50% | 1268 | 1866 | 1709 | 1635 | 1570 | 1516 | 1478 | 1432 | 1358 | 1309 | 1270 | 1232 | 1123 | 965 | 0.774 |
| 40% | 1204 | 1602 | 1570 | 1535 | 1500 | 1453 | 1397 | 1360 | 1315 | 1266 | 1231 | 1186 | 1093 | 926 | 0.760 |
| 25% | 1095 | 1507 | 1419 | 1370 | 1339 | 1303 | 1274 | 1238 | 1209 | 1182 | 1155 | 1125 | 1052 | 896 | 0.728 |
| 10% | 1017 | 1376 | 1299 | 1268 | 1229 | 1192 | 1167 | 1137 | 1117 | 1102 | 1082 | 1046 | 977 | 849 | 0.700 |

Indicative Basis Contract Prices

| Date | MPG | 17 | 17.5 | 18 | 18.5 | 19 | 19.5 | 20 | 21 | 22 | 23 | 28 |
|----------|-----|------|------|------|------|------|------|------|------|------|------|-----|
| Feb-2022 | | 2080 | 1960 | 1880 | 1800 | 1700 | 1550 | 1400 | 1360 | 1300 | 1260 | 420 |
| Mar-2022 | | 2080 | 1960 | 1880 | 1800 | 1700 | 1550 | 1400 | 1360 | 1300 | 1260 | 420 |
| Apr-2022 | | 2350 | 2130 | 2050 | 1800 | 1700 | 1550 | 1260 | 1360 | 1300 | 1260 | 420 |
| May-2022 | | 2080 | 1960 | 1880 | 1800 | 1700 | 1550 | 1260 | 1360 | 1300 | 1260 | 420 |
| Jun-2022 | | 2080 | 1960 | 1880 | 1800 | 1700 | 1550 | 1260 | 1360 | 1300 | 1260 | 420 |
| Jul-2022 | | 2080 | 1960 | 1880 | 1800 | 1700 | 1550 | 1260 | 1340 | 1280 | 1240 | 420 |
| Aug-2022 | | 2250 | 2130 | 2050 | 1780 | 1700 | 1550 | 1260 | 1340 | 1280 | 1240 | 380 |
| Sep-2022 | | 2080 | 1960 | 1880 | 1780 | 1700 | 1550 | 1260 | 1340 | 1280 | 1240 | 380 |
| Oct-2022 | | 2080 | 1960 | 1880 | 1780 | 1700 | 1550 | 1260 | 1340 | 1270 | 1240 | 380 |
| Nov-2022 | | 2080 | 1960 | 1880 | 1780 | 1700 | 1550 | 1260 | 1360 | 1290 | 1260 | 380 |
| Dec-2022 | | 2080 | 1960 | 1880 | 1780 | 1700 | 1550 | 1260 | 1330 | 1260 | 1230 | 380 |
| Jan-2023 | | 2080 | 1960 | 1880 | 1780 | 1700 | 1550 | 1260 | 1330 | 1260 | 1230 | 380 |
| Feb-2023 | | 2080 | 1960 | 1880 | 1780 | 1700 | 1550 | 1260 | 1330 | 1260 | 1230 | 380 |
| Mar-2023 | | 2080 | 1960 | 1880 | 1780 | 1700 | 1550 | 1260 | 1330 | 1260 | 1230 | 380 |
| Apr-2023 | | 2350 | 1960 | 1880 | 1780 | 1700 | 1550 | 1260 | 1330 | 1260 | 1230 | 380 |

Mulesing Status P/D's

| µm | Non Mulsed | Pain Relief |
|----|------------|-------------|
| 18 | +32 | +10 |
| 19 | +26 | +11 |
| 20 | +19 | +11 |
| 21 | +19 | +5 |
| 23 | 0 | 0 |
| 25 | 0 | +4 |

All prices on this sheet are listed in c/kg clean. MPG's are average North/South AWEX quoted figures. Mulesing P/D's quoted by AWEX. Basis Contract prices are published purely as a guide.

Please use above figures as a guide to submit your GTC or Target orders. Call 1800 629 396.