

17th March 2022

South Island: 7,373 Bales

Main buyers: Masurel 22%, NZWSI 14%, Schneider 10%, Chargeur 10%, B+B 8%, Curtis 2%, GM 2%. **Passed in: 32%.**

Today's Market

Crossbred Fleece Good colour 4/6"
 Crossbred Fleece Poor colour 4/6"
 Crossbred Shears
 Oddments
 Poor colour Lambs
 Good colour Lambs (on limited selection)

Movement

10 to 15 NZC ↓
 20 to 25 NZC ↓
 5 to 10 NZC ↓
 Up to 15 NZC ↓
 15 to 20 NZC ↓
 Unchanged

Compared to:

10/3
 " " "
 " " "
 " " "
 " " "

Today's NZD value:

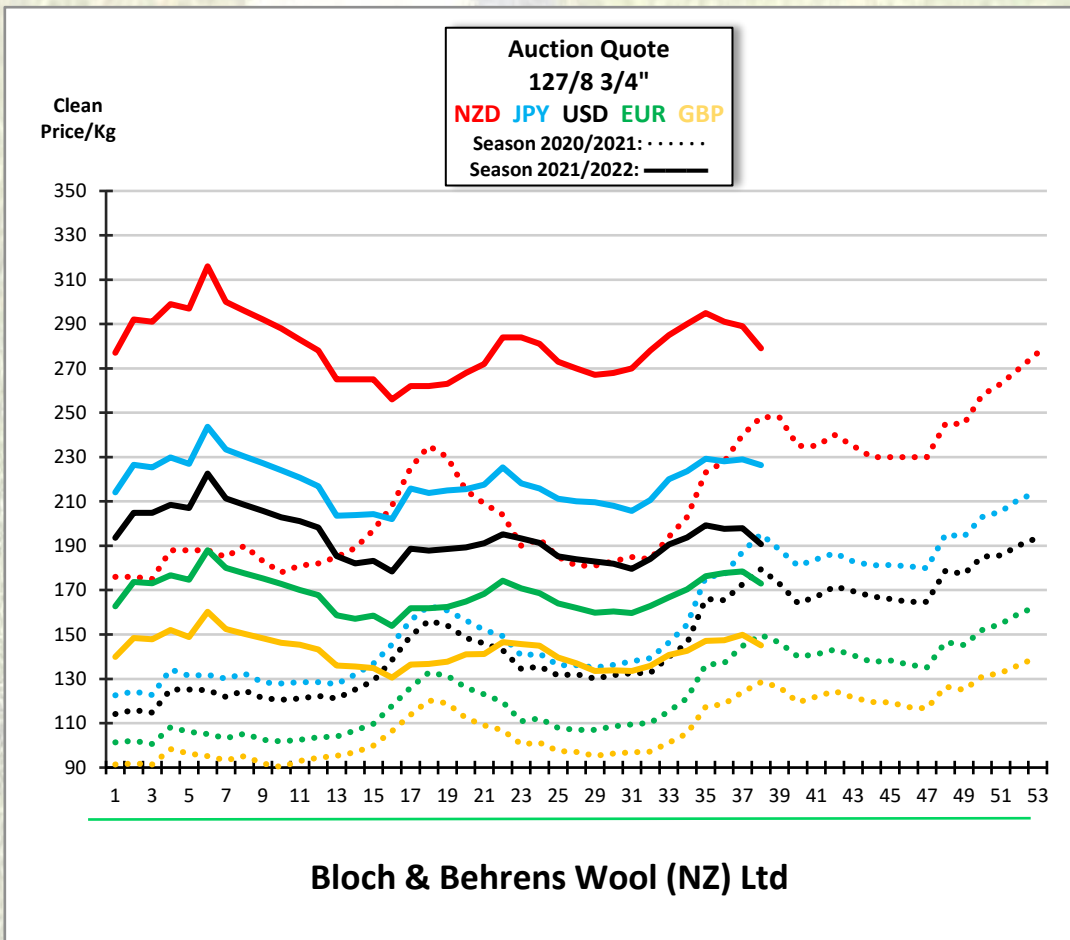
Against the USD: .6835
 " " AUD: .9377
 " " GBP: .5200
 " " EUR: .6198
 " " JPY: 81.16

Compared to 10/3

Unchanged
 0.3% ↑
 0.2% ↑
 0.3% ↑
 2.4% ↑

Next Auction 24/3:

North Island: 11,233 bales



Stock lots available:

Scoured wool for prompt shipment:

Ref.	Type	Mic.	Y-Z	Length	VM	Tons	Location
S16788A	3/4"-3/5" BB Flc	24.3	-2.9	est. 85+ HM	0.3	20	NZ (Nylon packs)
S16751B	2/5" Halfbred Flc	27.6	-0.8	est. 70-75HM	0.3	6.6*	NZ
S14719	607/8 2/3" fine	32.9	8.7	n/a	0.2	14	SOLD
S14700A	730 2/3"	28.7	0.9	n/a	0.1	20	NZ
S14700A	730 2/3"	28.8	1.0	n/a	0.1	20	NZ
S14700A	730 2/3"	29.0	1.0	n/a	0.1	20	NZ
S14720A	128 4/6"	35.5	3.1	LAC 111mm	0.1	20	NZ
S16796A	127 4/6"	36.9	0.5	LAC 105/74	0.1	20	NZ

*Balance left

RWS Certified:

Ref.	Type	Mic.	Y-Z	LAC	VM	Tons	Location
S16683A	730 2/3"	29.3	-1.2	n/a	0.0	16.4	NZ

Single Farm – GOTS Certified:

Ref.	Type	Mic.	Y-Z	LAC	VM	Tons	Location
S16421B	White Flc. 2/5"	22.7	-3.0	n/a	0.0	2	NZ

[For information about our Wool Integrity scheme, click here](#)

Bloch & Behrens Wool (NZ) Ltd
A subsidiary of PGG Wrightson Ltd.

503 Blenheim Road, Sockburn
 Christchurch 8042
 PO Box 9024, Tower Junction
 Christchurch 8149,
 New Zealand
 Email: bbnz@blochwool.com

Proudly Certified to the following Standards:

