

# Wool Weekly



Thursday, 2 June 2022

## WOOL MARKET MOVEMENTS

- The EMI closed at 1,414 c/kg clean, down 6 cents. While some Merino fleece MPG's rose in value, most ended the week lower. The other sectors also fell. The national offering reduced to 34,872 bales (down 10,187) bales while the national pass in rate was steady at 13.1% (down 0.9%). With no sales in Fremantle next week, the national offering will contract to 33,095 bales.
- Stylish (MF4), well measured Merino fleece lots with low (<2%) VM attracted strong competition in Sydney on Tuesday. Other lots trended lower with the 18 and 21 µm MPG's most affected. Superfine (<17.5 µm) lots regained some lost ground on Wednesday as broader types had mixed results, high (>2%) VM lots lost 5 to 10 cents. Stylish Merino skirtings with low VM (<3%) and favourable length were in short supply and maintained last week's value. Crossbreds were unchanged as all oddments categories were cheaper, losing up to 70 cents for the week. The Northern Regional Indicator closed at 1,517 c/kg clean, down 11 cents as the Northern Merino Carding Indicator tumbled 50 cents to 951 c/kg clean. The Sydney pass in rate was 14.8% with 149 bales withdrawn.
- Melbourne's Merino fleece sector softened on Tuesday before rallying at days end. The 16.5 µm MPG lost 64 cents. Stylish, Non Mulesed lots underpinned a stronger sale on Wednesday as most MPG's finished in positive territory. Fine (<18.5 µm), stylish Merino skirtings with low VM held their value, lots with high (>5%) VM lost up to 15 cents on both days. Well prepared crossbred lots attracted buyer attention on Tuesday before broader, poorly prepared lots dragged the sector down on Wednesday with 23.2% passed in. Yield determined oddments prices on Tuesday, lower yielding lots dropped 30 to 40 cents with further falls on Wednesday as Merino stains & crutchings lost 40 to 50 cents. The Southern Regional Indicator dipped 3 cents to 1,345 c/kg clean and the Southern Merino Carding Indicator dropped 47 cents to 949 c/kg clean. The Melbourne pass in rate was 11.9% with 376 bales withdrawn.
- Finer Merino fleece lots were out of favour in Fremantle on Tuesday as the 18 and 18.5 µm MPG's both dropped 24 cents. The sector steadied on Wednesday as buyers competed for stylish lots with higher (>63%) yields and low (<1.2%) VM. The 21 µm MPG gained 5 cents. A soft Merino skirtings sector retreated 25 to 50 cents despite a small offering. Oddments lost up to 50 cents on Tuesday and a further 20 cents on Wednesday. The Western Regional Indicator fell 14 cents to 1,490 c/kg clean and the Western Merino Carding Indicator fell 54 cents to 94 c/kg clean. The Fremantle pass in rate was 13.1% with 603 bales withdrawn.

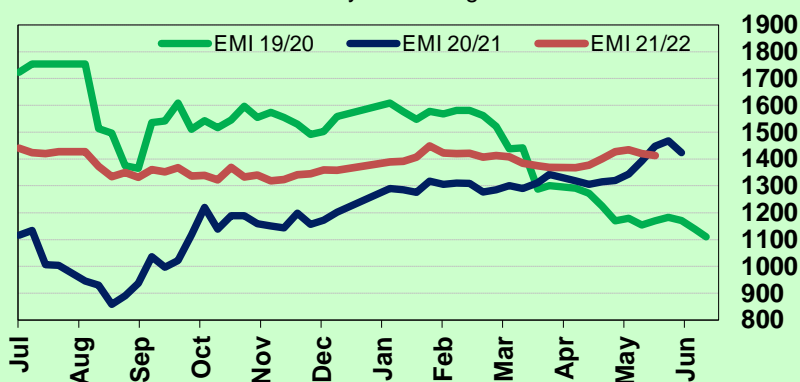
## AWEX WEEKLY WOOL PRICES

Regional Indicator	North	Wkly Chg	South	Wkly Chg	West	Wkly Chg
c/kg clean	1517	-11	1345	-3	1490	-14

MICRON PRICE GUIDES						
16.5	2907n	-10	2922	-50	-	-
17	2712	+7	2741	+24	-	-
17.5	2460	-7	2497	-2	-	-
18	2190	-8	2212	-12	2171n	-23
18.5	1947	-15	1991	+13	1988n	-24
19	1729	-10	1737	-9	1752	-15
19.5	1544	-14	1566	+1	1581	-7
20	1420n	-10	1430	-2	1429	-6
21	1341n	-2	1356n	+2	1357n	+6
22	-	-	1329n	0	-	-
23	-	-	-	-	-	-
24	-	-	-	-	-	-
25	-	-	-	-	-	-
26	-	-	689	-5	-	-
28	-	-	410	-17	-	-
30	-	-	-	-	-	-
32	-	-	-	-	-	-
MC	951n	-50	949	-47	954n	-54

AWEX EMI 2019/ 20 & 2020/ 21 Seasons vs Current  
Currently: 1414 c/kg clean



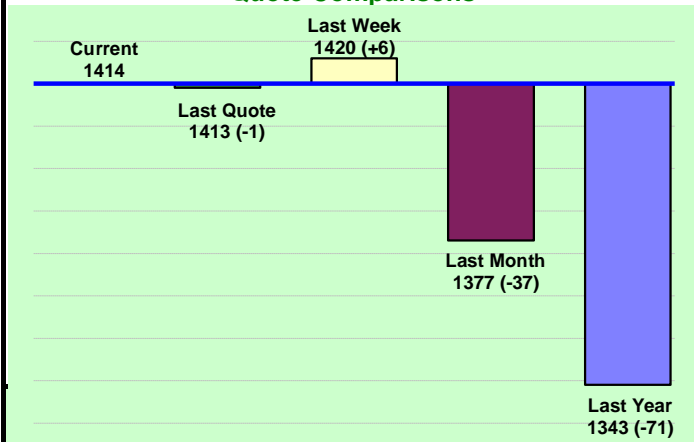
## UPCOMING AUCTION VOLUMES

	7/06/2022	14/06/2022	21/06/2022
Northern	S49	S50	S51
Sydney	12,596	9,460	9,560
Southern	M49	M50	M51
Melbourne	20,499	20,418	19,500
Western	F49	F50	F51
Fremantle	RECESS	5,450	RECESS
<b>Total</b>	<b>33,095</b>	<b>35,328</b>	<b>29,060</b>

## THIS WEEK'S SALES STATISTICS

Centre	Bales Originally	Bales Offered	Bales Sold	Pass in Rate
Northern	8,960	8,453	7,205	14.8%
Southern	21,751	20,059	17,669	11.9%
Western	7,050	6,360	5,418	14.8%
<b>TOTAL</b>	<b>37,761</b>	<b>34,872</b>	<b>30,292</b>	<b>13.1%</b>

### AWEX Weekly Eastern Market Indicator Quote Comparisons



### AUD vs USD from 06-Jul-04 to 01-Jun-22



Micron	EMI	16.5	17	17.5	18	18.5	19	19.5	20	21	22	23	25	28	AUD
Current MPG's	1414	2915	2727	2479	2201	1969	1733	1555	1425	1349	1329	-	-	410	0.716
10 year Average	1352	1970	1884	1814	1735	1659	1586	1528	1478	1441	1410	1371	1223	1084	0.795
This time last year	1343	2565	2398	2198	1998	1828	1675	1495	1349	1259	-	-	-	462	0.774
10 year High	2116	3187	3007	2831	2683	2569	2462	2414	2391	2371	2350	2308	2153	1828	1.058
10 year Low	858	1267	1216	1177	1140	1060	997	947	905	884	863	953	941	811	0.557
% Reported above current	34%	8%	7%	10%	18%	24%	32%	35%	42%	45%	44%	0%	0%	0%	78%
Diff b/w High & Current	702	273	280	353	482	600	729	859	966	1023	1021	-	-	1418	0.342
Diff b/w Ave & Current	62	945	842	665	466	310	147	27	-53	-92	-81	-	-	-674	-0.078

#### Percentile Bands

95%	1946	2965	2745	2542	2423	2342	2291	2268	2251	2232	2217	2167	1830	1522	1.050
90%	1812	2764	2597	2449	2329	2214	2119	2051	1995	1939	1909	1801	1383	1278	1.036
80%	1528	2552	2431	2289	2138	1963	1826	1748	1656	1583	1482	1428	1246	1181	0.995
75%	1440	2479	2357	2231	2088	1906	1759	1663	1567	1481	1426	1368	1165	1144	0.950
60%	1320	2080	2013	1951	1846	1745	1611	1492	1405	1352	1321	1296	1154	1042	0.802
50%	1275	1888	1742	1652	1583	1522	1491	1439	1363	1310	1275	1232	1123	964	0.773
40%	1212	1626	1580	1543	1504	1456	1401	1364	1322	1270	1234	1186	1093	925	0.757
25%	1098	1510	1425	1377	1345	1308	1277	1244	1216	1188	1158	1125	1052	895	0.727
10%	1018	1378	1304	1270	1232	1194	1168	1138	1118	1105	1084	1046	977	850	0.700

#### Indicative Basis Contract Prices

Date	MPG	17	17.5	18	18.5	19	19.5	20	21	22	23	28
Jun-2022		2550	2200	2090	1790	1690	1540	1330	1290	1230	1190	350
Jul-2022		2550	2200	2090	1790	1690	1540	1330	1290	1230	1190	350
Aug-2022		2550	2200	2090	1790	1690	1540	1330	1290	1230	1190	350
Sep-2022		2550	2200	2090	1790	1690	1540	1330	1290	1230	1190	350
Oct-2022		2440	2200	2090	1790	1690	1540	1340	1300	1240	1200	350
Nov-2022		2400	2160	2050	1790	1690	1540	1330	1290	1230	1190	350
Dec-2022		2400	2160	2050	1770	1690	1540	1330	1290	1230	1190	350
Jan-2023		2390	2150	2040	1770	1690	1540	1330	1290	1230	1190	350
Feb-2023		2380	2140	2030	1770	1690	1540	1330	1290	1220	1190	350
Mar-2023		2370	2130	2020	1770	1690	1540	1330	1290	1220	1190	350
Apr-2023		2360	2120	2010	1770	1690	1540	1330	1290	1220	1190	350
May-2023		2350	2110	2000	1770	1690	1540	1330	1290	1220	1190	350
Jun-2023		2440	2110	2000	1770	1690	1540	1330	1290	1220	1190	350
Jul-2023		2350	2110	2000	1770	1690	1540	1330	1290	1220	1190	350
Aug-2023		2350	2110	2000	1770	1690	1540	1330	1290	1220	1190	350

#### Mulesing Status P/D's

µm	Non Mulsed	Pain Relief
18	+65	+24
19	+45	+18
20	+47	+14
21	+19	0
23	0	0
25	+7	+11

All prices on this sheet are listed in c/kg clean. MPG's are average North/South AWEX quoted figures. Mulesing P/D's quoted by AWEX. Basis Contract prices are published purely as a guide.

Please use above figures as a guide to submit your GTC or Target orders. Call 1800 629 396.