

# Wool Weekly



Friday, 15 July 2022

## WOOL MARKET MOVEMENTS

- The EMI closed at 1,388 c/kg clean, down 19 cents in the last sale prior to the 3-week mid-year recess. The national offering rose 6,530 bales to 55,210 bales, the largest offering for nearly 2 and a half years. The national pass in rate fell 1.2% to 13.6%. Stylish (MF4) lots with favourable additional measurements and higher yields were keenly sought and held up in the falling market.
- Sydney's Merino fleece sector weakened (MPGs lost 14 to 45 cents), although the sector rallied in the final hour of Wednesday's sale. Stylish (MF4) lots with low (<2%) VM and good (40N/ktex) strength were well supported and less impacted. Merino skirtings were up to 20 cents cheaper on Tuesday, higher (>3%) VM lots were most affected. Quality skirtings (well measured MP4 with low VM) were unchanged on Wednesday, other types were cheaper. A small crossbred offering lost 10 cents as did locks & stains. Other oddments were unchanged. The Northern Regional Indicator lost 19 cents to 1,464 c/kg clean and the Northern Regional Carding Indicator closed at 913 c/kg clean, down 6 cents. The Sydney pass in rate was 14.2% with 738 bales withdrawn.
- Quality drove Merino fleece prices in Melbourne's three-day sale, large volumes of poorer (MF5 & MF6) style lots with unfavourable additional measurements were heavily discounted. Well measured, stylish (MF4) lots and non-Mulesed lots attracted premiums and offset further MPG falls. The quality improved on Thursday and all MPGs rose. Merino skirtings lifted as the week progressed, fine (<17.0 µm), stylish (MP4) lots with lower VM rose up to 30 cents. Broader (>27.0 µm) crossbred lots dipped (10 - 15 cents) on Tuesday, well prepared lots held their ground on Wednesday and Thursday's smaller offering was unchanged. Oddments weakened on Tuesday but strengthened as the sale continued. The Southern Regional Indicator closed at 1,337 c/kg clean down 20 cents and the Southern Merino Carding Indicator gained 3 cents to 904 c/kg clean. The Melbourne pass in rate was 10.9% with 1,733 bales withdrawn.
- Finer Merino fleece lots were out of favour in Fremantle dropping 50 (18.0 µm) and 46 (<18.5 µm) cents. Broader lots were less affected by the falling market, the 19.5 µm MPG dosed up 10 cents. Merino skirtings dipped on Tuesday (down 10 to 25 cents), finer lots (<18.5 µm) lost a further 15-20 cents on Wednesday as broader lots rose up to 20 cents. Oddments were mixed, trending lower on Tuesday with washing locks 10 to 20 cents higher. The Western Regional Indicator dipped 13 cents to 1,473 c/kg clean and the Western Merino Carding Indicator fell 10 cents to 921 c/kg clean. The Fremantle pass in rate was 20.3% with 1,071 bales withdrawn.

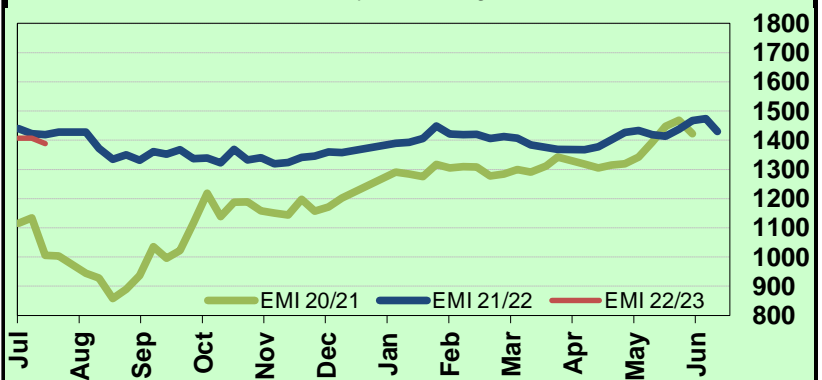
## AWEX WEEKLY WOOL PRICES

Regional Indicator	North	Wkly Chg	South	Wkly Chg	West	Wkly Chg
c/kg clean	1464	-19	1337	-20	1473	-13

MICRON PRICE GUIDES						
16.5	2883	-27	2988	+37	-	-
17	2639	-23	2751	+48	-	-
17.5	2347	-45	2462	-51	-	-
18	2058	-37	2165	-27	1992	-50
18.5	1851	-21	1879	-28	1836	-46
19	1683	-15	1688	-39	1679	-6
19.5	1540	-18	1566	-18	1565	+5
20	1442	-14	1447	-40	1457	-15
21	1384	-19	1403n	-15	1396	-9
22	-	-	1343n	-40	-	-
23	-	-	-	-	-	-
24	-	-	-	-	-	-
25	-	-	-	-	-	-
26	-	-	705n	0	-	-
28	390	-9	410	-2	-	-
30	-	-	320n	-10	-	-
32	-	-	-	-	-	-
MC	913	-6	904n	+3	921	-10

AWEX EMI 2020/ 21 & 2021/ 22 Seasons vs Current  
Currently: 1388 c/kg clean



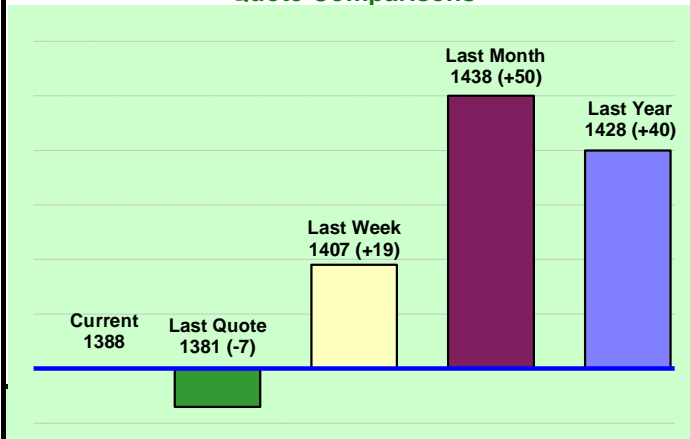
## UPCOMING AUCTION VOLUMES

	20/07/2022	27/07/2022	3/08/2022
Northern	S03	S04	S05
Sydney	RECESS	RECESS	RECESS
Southern	M03	M04	M05
Melbourne	RECESS	RECESS	RECESS
Western	F03	F04	F05
Fremantle	RECESS	RECESS	RECESS
<b>Total</b>	<b>RECESS</b>	<b>RECESS</b>	<b>RECESS</b>

## THIS WEEK'S SALES STATISTICS

Centre	Bales Originally	Bales Offered	Bales Sold	Pass in Rate
Northern	13,200	19,207	16,480	14.2%
Southern	22,357	26,835	23,899	10.9%
Western	7,100	9,168	7,310	20.3%
<b>TOTAL</b>	<b>42,657</b>	<b>55,210</b>	<b>47,689</b>	<b>13.6%</b>

### AWEX Weekly Eastern Market Indicator Quote Comparisons



### AUD vs USD from 06-Jul-04 to 14-Jul-22



Micron	EMI	16.5	17	17.5	18	18.5	19	19.5	20	21	22	23	25	28	AUD
<b>Current MPG's</b>	1388	2988	2751	2462	2165	1879	1688	1566	1447	1403	1343	-	-	410	0.676
<b>10 year Average</b>	1353	1983	1895	1823	1741	1662	1588	1529	1478	1440	1410	1371	1223	1082	0.793
<b>This time last year</b>	1428	2739	2521	2330	2130	1942	1769	1599	1442	1333	-	-	-	522	0.746
<b>10 year High</b>	2116	3187	3007	2831	2683	2569	2462	2414	2391	2371	2350	2308	2153	1828	1.058
<b>10 year Low</b>	858	1267	1216	1177	1140	1060	997	947	905	884	863	953	941	811	0.557
<b>% Reported above current</b>	37%	5%	6%	12%	21%	32%	37%	35%	38%	38%	43%	0%	0%	0%	96%
<b>Diff b/w High &amp; Current</b>	728	199	256	369	518	690	774	848	944	968	1007	-	-	1418	0.382
<b>Diff b/w Ave &amp; Current</b>	35	1005	856	639	424	217	100	37	-31	-37	-67	-	-	-672	-0.118

#### Percentile Bands

<b>95%</b>	1945	2978	2757	2553	2423	2341	2291	2268	2250	2232	2217	2167	1830	1519	1.050
<b>90%</b>	1808	2798	2619	2467	2325	2207	2112	2048	1993	1937	1906	1800	1383	1277	1.036
<b>80%</b>	1525	2564	2441	2309	2145	1970	1824	1744	1651	1578	1479	1428	1246	1181	0.994
<b>75%</b>	1445	2504	2370	2241	2095	1909	1760	1662	1559	1481	1425	1368	1165	1144	0.949
<b>60%</b>	1323	2130	2046	1967	1857	1753	1621	1494	1408	1357	1324	1296	1154	1038	0.799
<b>50%</b>	1278	1901	1750	1671	1589	1527	1498	1443	1365	1313	1277	1232	1123	964	0.772
<b>40%</b>	1216	1640	1584	1547	1506	1460	1402	1366	1325	1272	1237	1186	1093	924	0.756
<b>25%</b>	1099	1511	1429	1381	1346	1309	1278	1247	1217	1189	1160	1126	1052	895	0.725
<b>10%</b>	1018	1379	1306	1270	1233	1195	1169	1138	1119	1107	1085	1046	977	850	0.697

#### Indicative Basis Contract Prices

Date	MPG	17	17.5	18	18.5	19	19.5	20	21	22	23	28
Jul-2022		2380	2140	2030	1780	1680	1530	1400	1360	1300	1260	350
Aug-2022		2380	2140	2030	1780	1680	1530	1400	1360	1300	1260	350
Sep-2022		2380	2140	2030	1780	1680	1530	1400	1360	1300	1260	350
Oct-2022		2380	2140	2030	1780	1680	1530	1400	1360	1300	1260	350
Nov-2022		2380	2140	2030	1780	1680	1530	1340	1300	1240	1200	350
Dec-2022		2380	2140	2030	1780	1680	1530	1340	1300	1240	1200	350
Jan-2023		2380	2140	2030	1760	1680	1530	1340	1300	1240	1200	350
Feb-2023		2380	2140	2030	1760	1680	1530	1340	1300	1240	1200	350
Mar-2023		2370	2130	2020	1750	1670	1520	1310	1270	1200	1170	350
Apr-2023		2370	2130	2020	1750	1670	1520	1330	1290	1220	1190	350
May-2023		2360	2120	2010	1740	1660	1510	1300	1260	1190	1160	350
Jun-2023		2360	2120	2010	1740	1660	1510	1300	1260	1190	1160	350
Jul-2023		2440	2120	2010	1740	1660	1510	1300	1260	1190	1160	350
Aug-2023		2360	2120	2010	1740	1660	1510	1300	1260	1190	1160	350
Sep-2023		2360	2120	2010	1740	1660	1510	1300	1260	1190	1160	350

#### Mulesing Status P/D's

µm	Non Mulsed	Pain Relief
18	+65	+24
19	+45	+18
20	+47	+14
21	+19	0
23	0	0
25	+7	+11

All prices on this sheet are listed in c/kg clean. MPG's are average North/South AWEX quoted figures. Mulesing P/D's quoted by AWEX. Basis Contract prices are published purely as a guide.

Please use above figures as a guide to submit your GTC or Target orders. Call 1800 629 396.