

# Wool Weekly



Thursday, 1 September 2022

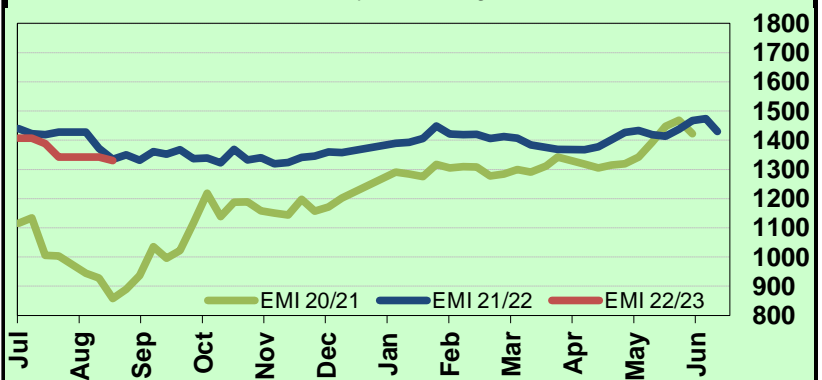
## WOOL MARKET MOVEMENTS

- Quality lots among this week's smaller offering (35,538 bales, down 1,893 bales) attracted strong buyer support. However, the larger quantity of poorer quality lots across the fleece and skirtings sectors in Melbourne dragged the EMI 12 cents lower to 1,330 c/kg clean. All three centres will be in operation next week with 39,562 bales currently rostered for sale.
- Sydney's Merino fleece offering featured a large proportion of superfine spinners lots due to the first designated Superfine sale of the new season. Stylish (MF4), fine (16.5 to 17.0 µm) lots with good strength (40 N/ktex) gained ground. Other fleece lots drifted lower. Quality Merino skirtings maintained last week's value, lower quality lots lost 15 to 30 cents. A small selection of crossbreeds were unchanged. Oddments started strong on Tuesday but backed off as the VM level of the offering increased. No further price movements occurred on Wednesday. The Northern Regional Indicator closed at 1,416 c/kg clean, down 2 cents and the Northern Merino Carding Indicator lost 9 cents to 859 c/kg clean. The Sydney pass in rate was 13.6% with 503 bales withdrawn.
- Tuesday produced mixed results for Merino fleece in Melbourne. Lots that met buyer specifications gained ground, other types trended lower and lost further ground on Wednesday. High (>5%) VM Merino skirtings dropped 20 cents, other lots across the diameter spectrum also trended lower on Tuesday and continued in the same vein on Wednesday. Finer (26 µm) crossbreeds lifted 10 cents as broader types eased on Tuesday. Poorly prepared lines were ignored on Wednesday and were passed in. Poorer quality oddments drifted lower this week, especially those with low yields. The Southern Regional Indicator dropped 18 cents to 1,273 c/kg clean and the Southern Merino Carding Indicator tumbled 17 cents to 832 c/kg clean. The Melbourne pass in rate was 12.% with 583 bales withdrawn.
- Fremantle's Merino fleece sector fell away following the one-week recess, led by the finer (<18.5 µm) MFGs which lost 31 to 34 cents. Further price falls occurred on Wednesday, the 18.0 µm MFGS lost a further 31 cents. Low (<2.0%) VM Merino skirtings held their ground on Tuesday, other lots were cheaper. No further price changes occurred on Wednesday. The Western Regional Indicator fell 18 cents to 1,441 c/kg clean and the Western Merino Carding Indicator slipped 9 cents to 886 c/kg clean. The Fremantle pass in rate was 19.6% with 372 bales withdrawn.

## AWEX WEEKLY WOOL PRICES

Regional Indicator	North	Wkly Chg	South	Wkly Chg	West	Wkly Chg
c/kg clean	1416	-2	1273	-18	1441	-18
MICRON PRICE GUIDES						
16.5	2858	+3	2847n	-47	-	-
17	2608	+11	2580	-55	-	-
17.5	2306	-10	2307	-76	-	-
18	2009	-12	2017	-75	1916n	-62
18.5	1792	+5	1754	-58	1771n	-45
19	1622	-2	1589	-40	1618	-20
19.5	1497	+1	1496	-20	1507	-18
20	1403	+11	1403	-2	1390	-18
21	-	-	1316	-8	1318	-10
22	-	-	1289n	+15	-	-
23	-	-	-	-	-	-
24	-	-	-	-	-	-
25	-	-	-	-	-	-
26	-	-	669n	+11	-	-
28	375	-5	380	-5	-	-
30	-	-	328n	-2	-	-
32	-	-	-	-	-	-
MC	859	-9	832	-17	886n	-9

AWEX EMI 2020/ 21 & 2021/ 22 Seasons vs Current  
Currently: 1330 c/kg clean



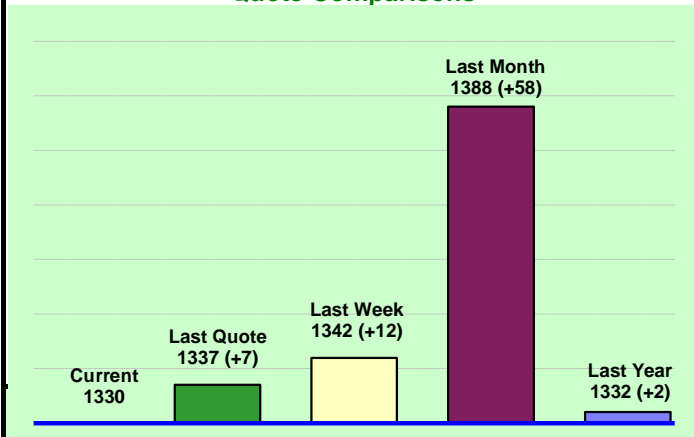
## UPCOMING AUCTION VOLUMES

	6/09/2022	13/09/2022	20/09/2022
Northern	S10	S11	S12
Sydney	12,127	10,840	10,680
Southern	M10	M11	M12
Melbourne	21,277	21,430	23,185
Western	F10	F11	F12
Fremantle	6,158	7,400	7,600
<b>Total</b>	<b>39,562</b>	<b>39,670</b>	<b>41,465</b>

## THIS WEEK'S SALES STATISTICS

Centre	Bales Originally	Bales Offered	Bales Sold	Pass in Rate
Northern	12,480	10,558	9,120	13.6%
Southern	22,257	16,925	14,863	12.2%
Western	6,910	8,051	6,471	19.6%
<b>TOTAL</b>	<b>41,647</b>	<b>35,534</b>	<b>30,454</b>	<b>14.3%</b>

### AWEX Weekly Eastern Market Indicator Quote Comparisons



### AUD vs USD from 06-Jul-04 to 31-Aug-22



Micron	EMI	16.5	17	17.5	18	18.5	19	19.5	20	21	22	23	25	28	AUD
<b>Current MPG's</b>	1330	2853	2594	2307	2013	1773	1606	1497	1403	1316	1289	-	-	378	0.688
<b>10 year Average</b>	1353	1991	1902	1828	1744	1664	1589	1529	1478	1439	1409	1371	1223	1081	0.792
<b>This time last year</b>	1332	2587	2409	2228	2009	1830	1631	1488	1328	1244	-	-	-	478	0.731
<b>10 year High</b>	2116	3187	3007	2831	2683	2569	2462	2414	2391	2371	2350	2308	2153	1828	1.058
<b>10 year Low</b>	858	1267	1216	1177	1140	1060	997	947	905	884	863	953	941	811	0.557
<b>% Reported above current</b>	45%	10%	14%	24%	34%	42%	45%	45%	46%	51%	52%	0%	0%	0%	91%
<b>Diff b/w High &amp; Current</b>	786	335	413	525	670	796	857	917	988	1055	1061	-	-	1451	0.370
<b>Diff b/w Ave &amp; Current</b>	-23	861	692	479	269	109	17	-33	-75	-123	-120	-	-	-703	-0.104

#### Percentile Bands

<b>95%</b>	1944	2978	2755	2552	2423	2340	2291	2268	2250	2232	2216	2167	1830	1518	1.050
<b>90%</b>	1807	2818	2628	2463	2325	2207	2111	2045	1992	1933	1901	1800	1383	1277	1.035
<b>80%</b>	1525	2568	2449	2323	2144	1965	1820	1743	1644	1571	1478	1428	1246	1180	0.993
<b>75%</b>	1440	2516	2378	2246	2094	1909	1759	1660	1556	1480	1423	1368	1165	1144	0.946
<b>60%</b>	1330	2141	2056	1974	1869	1768	1624	1495	1406	1353	1322	1296	1154	1037	0.798
<b>50%</b>	1281	1905	1757	1674	1593	1530	1499	1447	1366	1314	1277	1232	1123	964	0.771
<b>40%</b>	1219	1647	1588	1550	1509	1461	1404	1367	1327	1275	1240	1186	1093	924	0.755
<b>25%</b>	1101	1512	1431	1385	1348	1310	1279	1248	1217	1194	1162	1126	1052	895	0.724
<b>10%</b>	1019	1381	1306	1271	1233	1196	1171	1139	1119	1109	1085	1046	977	849	0.696

#### Indicative Basis Contract Prices

Date	MPG	17	17.5	18	18.5	19	19.5	20	21	22	23	28
Sep-2022		2300	2060	1950	1700	1600	1450	1320	1280	1220	1180	350
Oct-2022		2300	2060	1950	1700	1600	1450	1320	1280	1220	1180	350
Nov-2022		2300	2060	1950	1700	1600	1450	1320	1280	1220	1180	350
Dec-2022		2290	2050	1940	1690	1590	1440	1310	1270	1210	1170	350
Jan-2023		2280	2040	1930	1680	1580	1430	1310	1270	1210	1170	350
Feb-2023		2270	2030	1920	1670	1570	1420	1290	1250	1190	1150	350
Mar-2023		2260	2020	1910	1640	1560	1410	1290	1250	1190	1150	350
Apr-2023		2250	2010	1900	1630	1550	1400	1290	1250	1190	1150	350
May-2023		2250	2010	1900	1630	1550	1400	1190	1150	1080	1050	350
Jun-2023		2250	2010	1900	1630	1550	1400	1190	1150	1080	1050	350
Jul-2023		2250	2010	1900	1630	1550	1400	1190	1150	1080	1050	350
Aug-2023		2250	2010	1900	1630	1550	1400	1190	1150	1080	1050	350
Sep-2023		2440	2010	1900	1630	1550	1400	1190	1150	1080	1050	350
Oct-2023		2250	2010	1900	1630	1550	1400	1190	1150	1080	1050	350
Nov-2023		2250	2010	1900	1630	1550	1400	1190	1150	1080	1050	350

#### Mulesing Status P/D's

µm	Non Mulsed	Pain Relief
18	+65	+24
19	+45	+18
20	+47	+14
21	+19	0
23	0	0
25	+7	+11

All prices on this sheet are listed in c/kg clean. MPG's are average North/South AWEX quoted figures. Mulesing P/D's quoted by AWEX. Basis Contract prices are published purely as a guide.

Please use above figures as a guide to submit your GTC or Target orders. Call 1800 629 396.