

Wool Weekly



Thursday, 1 December 2022

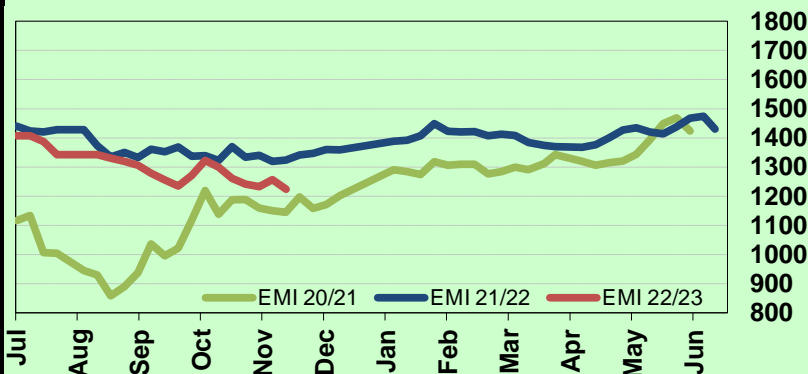
WOOL MARKET MOVEMENTS

- The national offering increased to 37,347 bales (up 4,054 bales) as last week's upward trend enticed more wool onto the market. Weaker bidding pushed all Merino MPG's lower in all centres except for the 16.5 and 17 µm MPG's in Melbourne which rose 19 and 17 cents respectively. Price falls in the Merino skirtings and crossbred sectors helped to push the EMI down to 1,224 c/kg clean, a loss of 32 cents. The national pass in rate rose 8.6% to 17.1%. Next week 44,775 bales are currently rostered for sale with a three-day sale scheduled in Melbourne.
- Finer (<18.5 µm) Merino fleece was out of favour in Sydney, especially those with high CVH on Tuesday. Selected superfine (<17.0 µm) lots assessed as MF3 or MF4 with favourable additional measurements gained some ground on Wednesday. Merino skirtings dropped 40 to 60 cents, although stylish lots with favourable length tended to maintain their value. Crossbreds eased led downwards by poorly prepared lots. Little change in the oddments sector. The Northern Regional Indicator dropped 26 cents to 1,320 c/kg clean as the Northern Merino Carding Indicator slipped 3 cents to 876 c/kg clean. The Sydney pass in rate was 11.2% with 131 bales withdrawn.
- A limited offering of quality fine types pushed most Merino fleece MPG's lower in Melbourne. Demand for MF4 lots with favourable additional measurements and low VM lifted on Wednesday following 8.8% of fleece lots withdrawn prior to sale. However, the bulk of the fleece offering lost 20 to 30 cents. Merino skirtings were largely unchanged on Tuesday before tumbling downward on Wednesday with finer types bearing the brunt of the price falls. Crossbreds weakened. Oddments were unchanged on Tuesday, Merino lambs lost up to 30 cents on Wednesday, locks gained 5 cents with other categories unchanged. The Southern Regional Indicator fell 36 cents to 1,166 c/kg clean and the Southern Merino Carding Indicator lost 3 cents to 864 c/kg clean. The Melbourne pass in rate was 15.6% with 977 bales withdrawn.
- All Merino fleece MPG's lost ground in Fremantle with the finer MPG's most affected. Almost 40% of Merino fleece lots were passed in on Wednesday. Stylish Merino skirtings with low VM were unchanged on Tuesday as 18.5 µm lots gained up to 15 cents. Buyers stepped away from skirtings on Wednesday. A small oddments offering was unchanged. The Western Regional Indicator closed at 1,370 c/kg clean down 38 cents. The Western Merino Carding Indicator was unchanged at 906 c/kg clean. The Fremantle pass in rate was 58.4% with 176 bales withdrawn.

AWEX WEEKLY WOOL PRICES

Regional Indicator	North	Wkly Chg	South	Wkly Chg	West	Wkly Chg
c/kg clean	1310	-26	1166	-36	1370	-38
MICRON PRICE GUIDES						
16.5	2268n	-24	2162	+19	-	-
17	2133	-47	2065n	+17	-	-
17.5	1979	-64	1928	-32	-	-
18	1775	-55	1737	-36	1698n	-68
18.5	1640	-49	1630	-54	1606n	-58
19	1558	-13	1533	-62	1503	-51
19.5	1480	-11	1445	-47	1440	-55
20	1396	-6	1382	-63	1377	-40
21	1302n	-17	1296	-57	1302n	-31
22	-	-	1225n	-33	-	-
23	-	-	-	-	-	-
24	-	-	-	-	-	-
25	-	-	-	-	-	-
26	595n	+3	620n	-24	-	-
28	317n	-3	330	-20	-	-
30	283n	-	298	-7	-	-
32	-	-	-	-	-	-
MC	876n	-4	864	-3	906n	0

AWEX EMI 2020/ 21 & 2021/ 22 Seasons vs Current
Currently: 1224 c/kg clean



UPCOMING AUCTION VOLUMES

	6/12/2022	13/12/2022	20/12/2022
Northern	S23	S24	S25
Sydney	11,494	10,945	RECESS
Southern	M23	M24	M25
Melbourne	25,689	24,904	RECESS
Western	F23	F24	F25
Fremantle	7,592	7,920	RECESS
Total	44,775	43,769	RECESS

THIS WEEK'S SALES STATISTICS

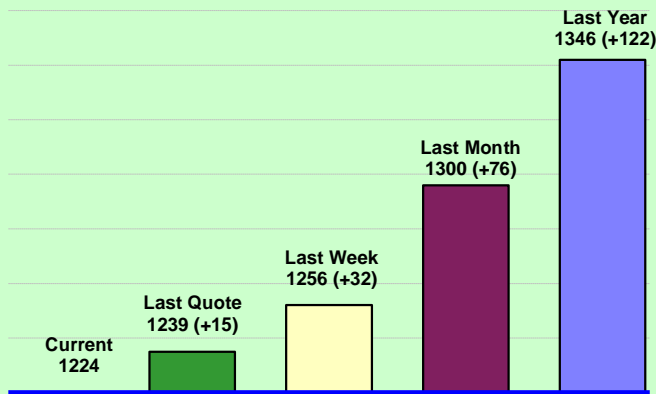
Centre	Bales Originally	Bales Offered	Bales Sold	Pass in Rate
Northern	10,570	10,439	9,268	11.2%
Southern	21,660	18,890	15,949	15.6%
Western	7,700	8,018	5,738	28.4%
TOTAL	39,930	37,347	30,955	17.1%

1 Dec 2022

Nutrien Wool Report

EMI 1224 NMI 1310 SMI 1166 WMI 1370

Average Nth-Sth MPG's as reported on 30 Nov 2022

AWEX Weekly Eastern Market Indicator
Quote Comparisons

AUD vs USD from 06-Jul-04 to 30-Nov-22



Micron	EMI	16.5	17	17.5	18	18.5	19	19.5	20	21	22	23	25	28	AUD
Current MPG's	1224	2215	2099	1954	1756	1635	1546	1463	1389	1299	1225	-	-	324	0.670
10 year Average	1351	2002	1911	1833	1746	1664	1588	1528	1476	1436	1405	1371	1223	1077	0.789
This time last year	1346	2577	2408	2224	2019	1828	1660	1500	1376	1318	-	-	-	404	0.717
10 year High	2116	3187	3007	2831	2683	2569	2462	2414	2391	2371	2350	2308	2153	1828	1.058
10 year Low	858	1267	1216	1177	1140	1060	997	947	905	884	863	953	941	725	0.557
% Reported above current	64%	38%	40%	44%	49%	50%	49%	53%	49%	56%	66%	0%	0%	0%	95%
Diff b/w High & Current	892	972	908	878	927	934	917	951	1002	1072	1125	-	-	1505	0.388
Diff b/w Ave & Current	-127	213	188	120	10	-29	-43	-65	-87	-137	-180	-	-	-753	-0.119

Percentile Bands

95%	1943	2975	2751	2547	2419	2339	2290	2267	2246	2229	2210	2167	1830	1516	1.050
90%	1798	2816	2624	2461	2317	2201	2102	2040	1985	1904	1875	1800	1383	1273	1.035
80%	1523	2573	2446	2313	2138	1961	1809	1729	1636	1552	1475	1428	1246	1179	0.990
75%	1438	2517	2377	2241	2091	1903	1754	1653	1550	1476	1418	1368	1165	1144	0.943
60%	1322	2163	2080	1984	1868	1750	1618	1495	1405	1352	1318	1296	1154	1026	0.793
50%	1279	1918	1768	1688	1600	1542	1506	1449	1369	1314	1276	1232	1123	960	0.769
40%	1223	1667	1602	1558	1513	1464	1410	1372	1330	1279	1238	1186	1093	922	0.753
25%	1103	1516	1436	1388	1353	1319	1285	1251	1220	1196	1164	1126	1052	892	0.722
10%	1019	1383	1309	1272	1236	1196	1172	1141	1124	1112	1086	1046	977	843	0.691

Indicative Basis Contract Prices

Date	MPG	17	17.5	18	18.5	19	19.5	20	21	22	23	28
Nov-2022		2000	1810	1700	1550	1500	1380	1240	1200	1120	1100	300
Dec-2022		2000	1810	1700	1550	1500	1380	1240	1200	1120	1100	300
Jan-2023		2000	1810	1700	1550	1500	1380	1240	1200	1120	1100	300
Feb-2023		2000	1810	1700	1550	1500	1380	1240	1200	1120	1100	300
Mar-2023		2000	1810	1700	1550	1500	1380	1240	1200	1120	1100	300
Apr-2023		2000	1810	1700	1550	1500	1380	1240	1200	1120	1100	300
May-2023		2000	1810	1700	1550	1500	1380	1240	1200	1120	1100	300
Jun-2023		2000	1810	1700	1550	1500	1380	1240	1200	1120	1100	300
Jul-2023		2000	1810	1700	1550	1500	1380	1240	1200	1120	1100	300
Aug-2023		2000	1810	1700	1550	1500	1380	1240	1200	1120	1100	300
Sep-2023		2050	1860	1750	1600	1550	1430	1240	1200	1120	1100	300
Oct-2023		2050	1860	1750	1600	1550	1430	1240	1200	1120	1100	300
Nov-2023		2050	1860	1750	1600	1550	1430	1240	1200	1120	1100	300
Dec-2023		2050	1860	1750	1600	1550	1430	1240	1200	1120	1100	300
Jan-2024		2050	1860	1750	1600	1550	1430	1240	1200	1120	1100	300

Mulesing Status P/D's

µm	Non Mulsed	Pain Relief
18	+65	+24
19	+45	+18
20	+47	+14
21	+19	0
23	na	na
25	+7	+11

All prices on this sheet are listed in c/kg clean. MPG's are average North/South AWEX quoted figures. Mulesing P/D's quoted by AWEX. Basis Contract prices are published purely as a guide.

Please use above figures as a guide to submit your GTC or Target orders. Call 1800 629 396.