

# Wool Weekly



Thursday, 26 January 2023

## WOOL MARKET MOVEMENTS

- The EMI slipped 3 cents to 1,338 c/kg clean, largely due to currency movements as the EMI in USD terms rose 24 cents. Well measured, stylish lots drew strong competition and held last week's value. Non Mulesed lots continue to attract significant premiums. Buyers sought out Merino skirtings with low VM, which performed well. The national offering reduced to 44,306 bales (down 3,037) as the national pass in rate jumped 7.5% to 13.2%. Poorer style lots with unfavourable additional measurements comprised the bulk of the passed in lots.
- Sydney's Merino fleece sector ranged in quality, variation in VM, CVH and strength measurements moved prices around. Finer (<18.0 µm) MPGs were most affected on Tuesday (0 to 34 cents lower) before recovering on Wednesday (up 8 to 24 cents). Stylish, well prepared Merino skirtings with low VM lifted 10 cents on Tuesday and held firm on Wednesday, lots with higher VM (>4%) dropped up to 20 cents. Crossbreds eased on Tuesday before finer (26 µm) lots lifted on Wednesday. Finer (<18.0 µm) oddments held firm as crutchings eased. The Northern Regional Indicator slipped 4 cents to 1,411 c/kg clean as the Northern Merino Carding Indicator lifted 4 cents to 894 c/kg clean. The Sydney pass in rate was 8.5% with 265 bales withdrawn.
- Melbourne's Merino fleece sector started slowly on Tuesday but gained momentum as the week progressed. Stylish (MF4) lots with low CVH and low (<1.5%) VM were keenly sought. Merino skirtings were steady on Tuesday, but softened on Wednesday, dropping 15 to 20 cents across all types and descriptions. A limited supply of fine (17.5 µm) skirtings held their ground. Well prepared crossbred lots were in abundance on Tuesday and prices lifted in response. Wednesday saw the reverse as poorly prepared lots dipped 10 to 15 cents. Merino locks with high yields were in favour on Tuesday as the sector firmed before lots with high VM and lower yields dampened demand on Wednesday. The Southern Regional Indicator lost 3 cents to 1,289 c/kg clean with the Southern Merino Carding Indicator unchanged at 872 c/kg clean. The Melbourne pass in rate was 11.6% with 1,186 bales withdrawn.
- Fremantle's Merino fleece sector retreated this week. All MPGs closed lower, down 5 (21 µm) to 27 (19.5µm) cents. Merino skirtings were unchanged, except for a short supply of broader (>19.5 µm) lots which lifted up to 15 cents. No change to oddments on Tuesday before the sector eased on Wednesday. The Western Regional Indicator dropped 12 cents to 1,475 c/kg clean and the Western Merino Carding Indicator closed at 906 cents, down 3 cents. The Fremantle pass in rate was 21.2% with 278 bales withdrawn.

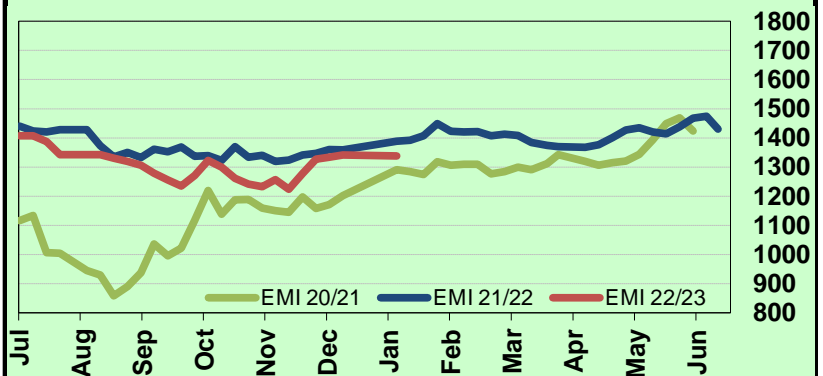
## AWEX WEEKLY WOOL PRICES

Regional Indicator	North	Wkly Chg	South	Wkly Chg	West	Wkly Chg
c/kg clean	1411	-4	1289	-3	1475	-12

MICRON PRICE GUIDES						
16.5	2362n	-10	2372	+15	-	-
17	2307	+15	2325	-	-	-
17.5	2158	-5	2168	+10	-	-
18	1995	+17	2010	+15	1888n	-14
18.5	1812	-9	1834	+12	1757	-17
19	1680	-5	1692	+6	1641	-20
19.5	1588	+7	1593	0	1569	-27
20	1517	-2	1531	+2	1502	-26
21	1420n	-	1444	-2	1442n	-5
22	-	-	1377n	-1	-	-
23	-	-	-	-	-	-
24	-	-	-	-	-	-
25	-	-	784	-2	-	-
26	-	-	598	-6	-	-
28	328n	-12	342	-8	-	-
30	-	-	295	-5	-	-
32	-	-	238	-7	-	-
MC	894n	+4	872	0	906n	-3

AWEX EMI 2020/ 21 & 2021/ 22 Seasons vs Current  
Currently: 1338 c/kg clean



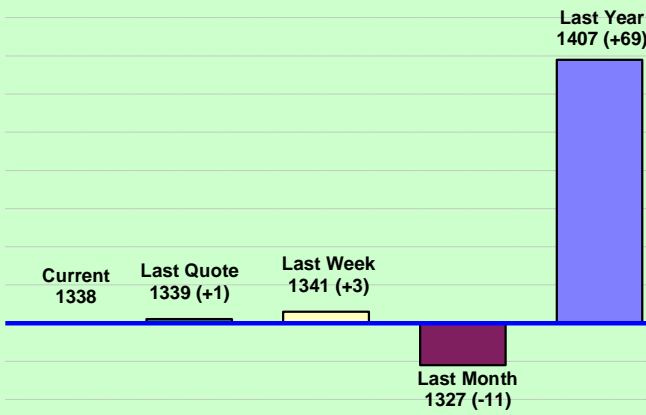
## UPCOMING AUCTION VOLUMES

	31/01/2023	7/02/2023	14/02/2023
Northern	S31	S32	S33
Sydney	12,931	12,060	10,805
Southern	M31	M32	M33
Melbourne	21,712	22,235	24,884
Western	F31	F32	F33
Fremantle	8,293	9,165	9,250
<b>Total</b>	<b>42,936</b>	<b>43,460</b>	<b>44,939</b>

## THIS WEEK'S SALES STATISTICS

Centre	Bales Originally	Bales Offered	Bales Sold	Pass in Rate
Northern	9,630	11,395	10,421	8.5%
Southern	24,058	21,868	19,340	11.6%
Western	9,150	11,043	8,706	21.2%
<b>TOTAL</b>	<b>42,838</b>	<b>44,306</b>	<b>38,467</b>	<b>13.2%</b>

### AWEX Weekly Eastern Market Indicator Quote Comparisons



### AUD vs USD from 06-Jul-04 to 25-Jan-23



Micron	EMI	16.5	17	17.5	18	18.5	19	19.5	20	21	22	23	25	28	AUD
<b>Current MPG's</b>	1338	2367	2316	2163	2003	1823	1686	1591	1524	1432	1377	-	784	335	0.710
<b>10 year Average</b>	1350	2006	1915	1837	1749	1666	1589	1528	1476	1436	1404	1371	1223	1074	0.788
<b>This time last year</b>	1407	2738	2563	2389	2143	1920	1727	1562	1437	1363	-	-	-	422	0.707
<b>10 year High</b>	2116	3187	3007	2831	2683	2569	2462	2414	2391	2371	2350	2308	2153	1828	1.058
<b>10 year Low</b>	858	1267	1216	1177	1140	1060	997	947	905	884	863	953	941	725	0.557
<b>% Reported above current</b>	42%	31%	29%	32%	33%	37%	36%	32%	30%	34%	35%	0%	0%	98%	79%
<b>Diff b/w High &amp; Current</b>	778	820	691	668	680	746	776	823	867	939	973	-	1369	1493	0.348
<b>Diff b/w Ave &amp; Current</b>	-12	361	401	326	254	157	97	62	48	-4	-27	-	-439	-739	-0.078

#### Percentile Bands

<b>95%</b>	1943	2975	2749	2544	2418	2337	2288	2267	2245	2228	2208	2167	1830	1515	1.050
<b>90%</b>	1795	2812	2621	2457	2313	2200	2098	2038	1983	1901	1874	1800	1383	1270	1.035
<b>80%</b>	1522	2567	2442	2309	2134	1957	1807	1727	1633	1546	1470	1428	1246	1178	0.986
<b>75%</b>	1434	2514	2374	2241	2088	1901	1750	1651	1545	1471	1416	1368	1165	1144	0.941
<b>60%</b>	1323	2176	2098	1988	1873	1758	1622	1498	1407	1353	1319	1296	1154	1026	0.790
<b>50%</b>	1281	1933	1775	1702	1616	1551	1511	1452	1371	1315	1277	1232	1123	954	0.768
<b>40%</b>	1224	1686	1607	1560	1518	1467	1416	1374	1331	1281	1240	1186	1093	922	0.752
<b>25%</b>	1105	1517	1437	1391	1354	1322	1287	1254	1221	1198	1164	1126	1052	892	0.721
<b>10%</b>	1019	1384	1311	1272	1237	1198	1173	1142	1126	1112	1086	1046	977	842	0.690

#### Indicative Basis Contract Prices

Date	MPG	17	17.5	18	18.5	19	19.5	20	21	22	23	28
Jan-2023		2220	2000	1890	1700	1650	1530	1440	1400	1320	1300	325
Feb-2023		2220	1990	1880	1700	1650	1530	1440	1400	1320	1300	325
Mar-2023		2220	1990	1880	1690	1640	1520	1430	1390	1310	1290	300
Apr-2023		2130	1940	1830	1680	1630	1510	1420	1380	1300	1280	300
May-2023		2120	1930	1820	1670	1620	1500	1410	1370	1290	1270	300
Jun-2023		2110	1920	1810	1660	1610	1490	1410	1370	1290	1270	300
Jul-2023		2100	1910	1800	1650	1600	1480	1340	1300	1220	1200	300
Aug-2023		2100	1910	1800	1650	1600	1480	1340	1300	1220	1200	300
Sep-2023		2100	1910	1800	1650	1600	1480	1340	1300	1220	1200	300
Oct-2023		2100	1910	1800	1650	1600	1480	1340	1300	1220	1200	300
Nov-2023		2100	1910	1800	1650	1600	1480	1340	1300	1220	1200	300
Dec-2023		2100	1910	1800	1650	1600	1480	1340	1300	1220	1200	300
Jan-2024		2100	1910	1800	1650	1600	1480	1340	1300	1220	1200	300
Feb-2024		2100	1910	1800	1650	1600	1480	1340	1300	1220	1200	300
Mar-2024		2100	1910	1800	1650	1600	1480	1340	1300	1220	1200	300

#### Mulesing Status P/D's

µm	Non Mulsed	Pain Relief
18	+65	+24
19	+45	+18
20	+47	+14
21	+19	0
23	na	na
25	+7	+11

All prices on this sheet are listed in c/kg clean. MPG's are average North/South AWEX quoted figures. Mulesing P/D's quoted by AWEX. Basis Contract prices are published purely as a guide.

Please use above figures as a guide to submit your GTC or Target orders. Call 1800 629 396.