

# Wool Weekly



Wednesday, 3 May 2023

## WOOL MARKET MOVEMENTS

- VM continues to impact on prices across all sectors, as the VM percentages in the offering continue to rise. Oddments continue to languish, as locks remain firmly out of favour. Demand for low VM lots remains strong, with the EMI lifting 8 cents to 1,310 c/kg clean. Approximately 6% of the offering was withdrawn prior to sale, resulting in 38,838 bales offered for sale (up 33 bales on last week). The national pass in rate was 10.0% (up 1.4%). Sales on Tuesday and Wednesday next week will see 48,643 offered for sale across all three centres.
- A small Merino fleece offering in Sydney on Tuesday pushed the broader ( $\geq 18.5 \mu\text{m}$ ) MPGs upwards (2 to 40 cents). Finer MPGs lost ground due to high (2%) levels of VM. The 17.5  $\mu\text{m}$  MPG was unchanged on Wednesday, all other MPGs gained ground (up 1 to 13 cents as VM continues to drive prices. Poorly prepared Merino skirtings remain out of favour with cotts and unscourable colour dampening demand. Stylish crossbred lots pushed the 28  $\mu\text{m}$  MPG up 14 cents on Tuesday with well prepared, stylish lots in favour on Wednesday. High (>5%) VM locks continue to constrain demand for oddments, despite no change to crutchings and stains. The Northern Regional Indicator rose 11 cents to 1,371 c/kg clean with the Northern Merino Carding Indicator down 10 cents to 821 c/kg clean. The Sydney pass in rate was 9.0% with 155 bales withdrawn.
- Minor price movements in Melbourne's Merino fleece sector on Tuesday, before the finer (16.5 to 18  $\mu\text{m}$ ) MPGs jumped up to 29 cents on Wednesday. Selected stylish Merino skirtings with low VM gained ground on Tuesday, but trended lower at sales end on Wednesday as lower yielding lots with higher VM were out of favour. No change to crossbreds on Tuesday before minor price gains on Wednesday at the broader end of the range. Oddments were largely unchanged. The Southern Regional Indicator closed at 1,270 c/kg clean up 6 cents as the Southern Merino Carding Indicator slipped 8 cents to 826 c/kg clean. The Melbourne pass in rate was 10.3% with 1,576 bales withdrawn.
- Another strong day for the Fremantle Merino fleece sector on Tuesday with all MPGs ending the day higher (up 9 to 16 cents) as buyer sought MF4 and MF5 lots with low (<1.2%) VM. The sector eased on Wednesday, although the finer (18 & 18.5  $\mu\text{m}$ ) MPGs rose 6 and 11 cents respectively. Fine (<18.5  $\mu\text{m}$ ) Merino skirtings with low (<3%) VM rose up to 25 cents as the whole sector gained ground. A small selection of oddments was firm on Tuesday, before trending lower on Wednesday. The Western Regional Indicator gained 7 cents to 1,479 c/kg clean and the Western Merino Carding Indicator lost 9 cents to 810 c/kg clean. the Fremantle pass in rate was 13.6% with 780 bales withdrawn.

## THIS WEEK'S SALES STATISTICS

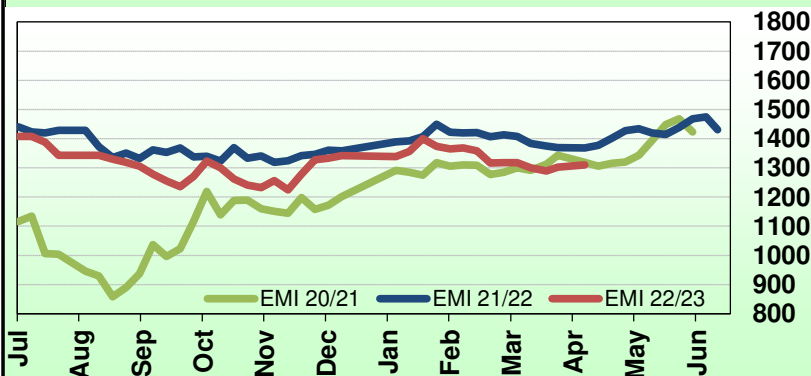
Centre	Bales Originally	Bales Offered	Bales Sold	Pass in Rate
Northern	9,310	9,392	8,551	9.0%
Southern	23,670	21,858	19,610	10.3%
Western	8,680	7,588	6,559	13.6%
<b>TOTAL</b>	<b>41,660</b>	<b>38,838</b>	<b>34,720</b>	<b>10.6%</b>

## AWEX WEEKLY WOOL PRICES

Regional Indicator	North	Wkly Chg	South	Wkly Chg	West	Wkly Chg
c/kg clean	1371	+11	1270	+6	1479	+7
MICRON PRICE GUIDES						
16.5	2402n	-3	2382	+17	-	-
17	2220	-2	2230	+30	-	-
17.5	2012	-8	2093	+10	-	-
18	1867	+4	1890	+25	1868n	+17
18.5	1751	+7	1757	+3	1769n	+25
19	1651	+31	1644	-7	1680	+6
19.5	1595	+53	1578	+6	1610	0
20	1521	+43	1538	-2	1532	-5
21	1435n	+4	1488	+2	1470	0
22	1400n	-	1432n	0	-	-
23	-	-	-	-	-	-
24	-	-	-	-	-	-
25	-	-	-	-	-	-
26	-	-	555	0	-	-
28	337n	-	335	0	-	-
30	-	-	307	0	-	-
32	-	-	250	0	-	-
MC	821n	-10	826	-8	810n	-9

## AWEX EMI 2020/21 & 2021/22 Seasons vs Current

Currently: 1310 c/kg clean



## UPCOMING AUCTION VOLUMES

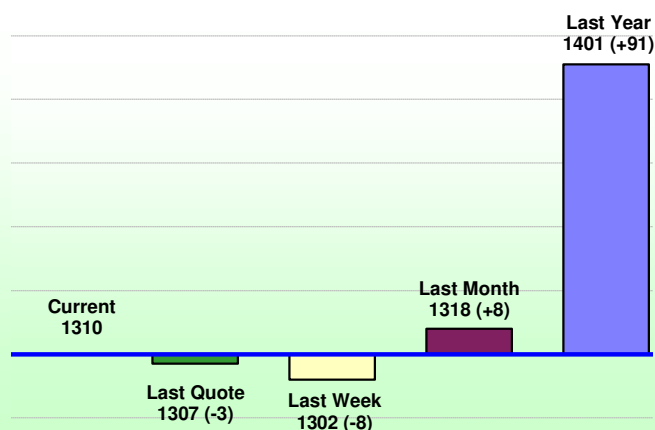
	8/05/2023	15/05/2023	22/05/2023
Northern	S45	S46	S47
Sydney	9,916	9,580	9,500
Southern	M45	M46	M47
Melbourne	27,129	24,550	21,729
Western	F45	F46	F47
Fremantle	11,598	8,150	8,200
<b>Total</b>	<b>48,643</b>	<b>42,280</b>	<b>39,429</b>

3 May 2023

## Nutrien Wool Report

EMI 1310 NMI 1371 SMI 1270 WMI 1479

Average Nth-Sth MPG's as reported on 3 May 2023

AWEX Weekly Eastern Market Indicator  
Quote Comparisons

## AUD vs USD from 06-Jul-04 to 03-May-23



Micron	EMI	16.5	17	17.5	18	18.5	19	19.5	20	21	22	23	25	28	AUD
Current MPG's	1310	2392	2225	2053	1879	1754	1648	1587	1530	1462	1416	-	-	336	0.667
10 year Average	1350	2018	1926	1846	1755	1670	1592	1531	1478	1437	1404	1371	1223	1066	0.784
This time last year	1401	-	2650	2428	2162	1943	1716	1549	1425	1343	1326	-	-	405	0.711
10 year High	2116	3187	3007	2831	2683	2569	2462	2414	2391	2371	2350	2308	2153	1828	1.058
10 year Low	858	1267	1216	1177	1140	1060	997	947	905	884	863	953	941	725	0.557
% Reported above current	49%	30%	35%	39%	43%	44%	41%	33%	31%	30%	29%	-	-	0%	95%
Diff b/w High & Current	806	795	782	779	804	815	815	827	862	910	934	-	-	1492	0.391
Diff b/w Ave & Current	-40	374	299	207	123	84	56	56	52	25	12	-	-	-730	-0.117

95%	1940	2969	2747	2541	2409	2334	2285	2263	2243	2225	2204	2167	1830	1506	1.050
90%	1778	2802	2618	2452	2308	2187	2094	2030	1968	1892	1863	1800	1383	1265	1.035
80%	1517	2564	2438	2295	2130	1943	1804	1721	1626	1543	1465	1428	1246	1178	0.985
75%	1431	2504	2373	2231	2079	1892	1748	1643	1549	1471	1416	1367	1165	1141	0.938
60%	1325	2219	2119	2015	1890	1774	1630	1504	1418	1364	1324	1296	1154	1025	0.787
50%	1285	1959	1819	1740	1640	1598	1532	1463	1375	1319	1279	1232	1123	951	0.766
40%	1233	1726	1619	1565	1525	1476	1425	1384	1334	1283	1243	1186	1093	918	0.749
25%	1111	1521	1445	1394	1360	1327	1288	1260	1224	1202	1171	1126	1052	891	0.718
10%	1020	1388	1314	1273	1239	1202	1173	1143	1127	1113	1087	1046	977	828	0.686

## Indicative Basis Contract Prices

Date	MPG	17	17.5	18	18.5	19	19.5	20	21	22	23	28
May-2023		2020	1820	1720	1640	1620	1550	1450	1430	1350	1330	300
Jun-2023		2020	1820	1720	1640	1620	1540	1450	1430	1350	1330	300
Jul-2023		2000	1800	1700	1620	1600	1510	1420	1400	1320	1300	300
Aug-2023		2000	1800	1700	1620	1600	1480	1420	1400	1320	1300	300
Sep-2023		2000	1800	1700	1620	1600	1480	1420	1400	1320	1300	300
Oct-2023		2000	1800	1700	1620	1600	1480	1420	1400	1320	1300	300
Nov-2023		2000	1800	1700	1620	1600	1480	1420	1400	1320	1300	300
Dec-2023		2060	1860	1760	1680	1660	1540	1420	1400	1320	1300	300
Jan-2024		2040	1840	1740	1680	1660	1540	1400	1380	1300	1280	300
Feb-2024		2040	1840	1740	1680	1660	1540	1400	1380	1300	1280	300
Mar-2024		2040	1840	1740	1680	1660	1540	1390	1370	1290	1270	300
Apr-2024		2040	1840	1740	1680	1660	1540	1390	1370	1290	1270	300
May-2024		2040	1840	1740	1680	1660	1540	1390	1370	1290	1270	300
Jun-2024		2040	1840	1740	1680	1660	1540	1390	1370	1290	1270	300
Jul-2024		2040	1840	1740	1680	1660	1540	1390	1370	1290	1270	300

## Mulesing Status P/D's

µm	Non Mulsed	Pain Relief
18	+65	+24
19	+45	+18
20	+47	+14
21	+19	0
23	na	na
25	+7	+11

All prices on this sheet are listed in c/kg clean. MPG's are average North/South AWEX quoted figures. Mulesing P/D's quoted by AWEX. Basis Contract prices are published purely as a guide.

Please use above figures as a guide to submit your GTC or Target orders. Call 1800 629 396.