

28<sup>th</sup> April 2023

South Island: 9,900 Bales

Main buyers: Masurel 20%, NZWSI 13%, Schneider 9%, JSB 8%, B+B 8%,  
Curtis 7%, Chargeurs 6%, GM 2%.

Passed in: 28%

### Today's Market

Xbred All lengths Good Colour  
Xbred All lengths Ave Colour  
Xbred All lengths Poor Colour  
Shear Oddments Inferior

### Movement

Up to 5NZC ↓  
Up to 5NZC ↑  
Up to 5NZC ↓  
Unchanged

### Compared to:

South Island 20/4  
" " "  
" " "  
" " "

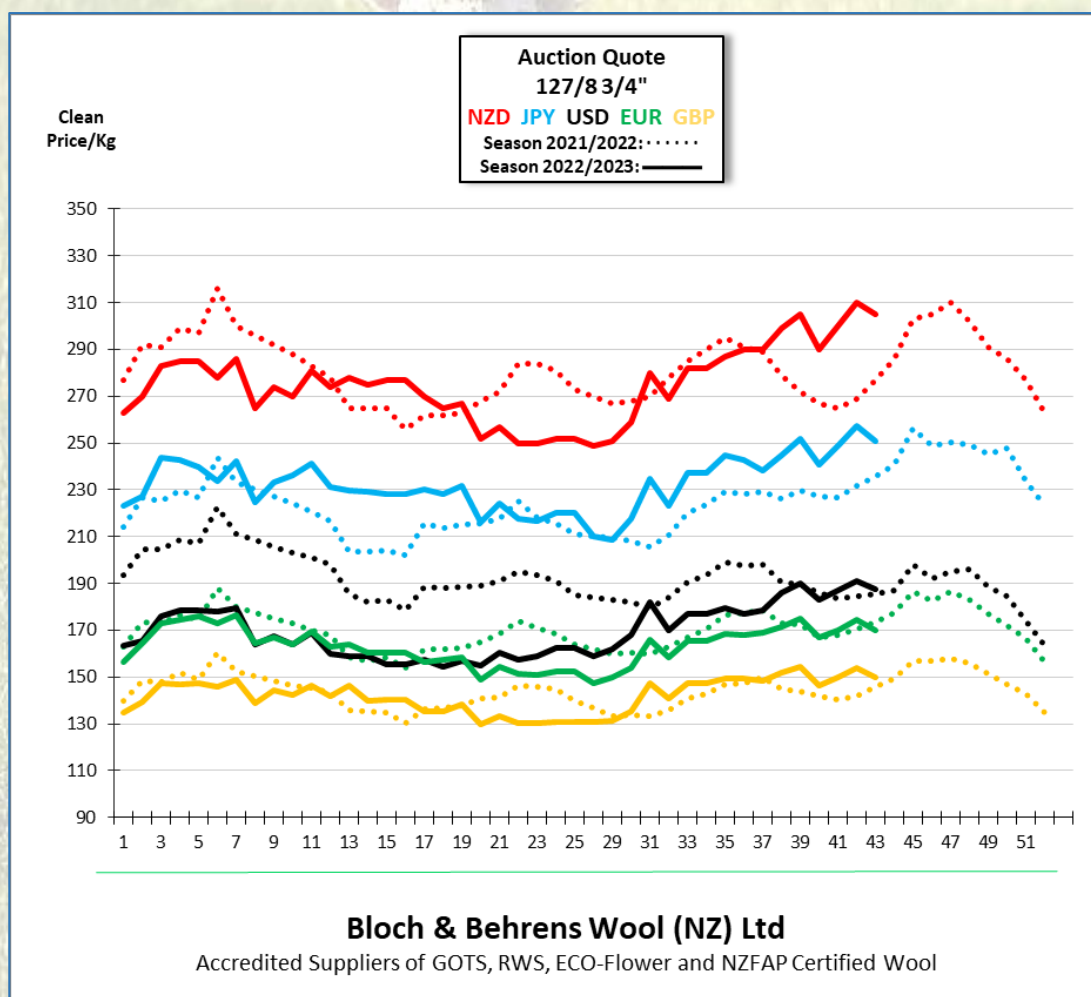
### Today's NZD value:

Against the USD: .6150  
" " AUD: .9275  
" " GBP: .4920  
" " EUR: .5575  
" " JPY: 82.30

### Compared to 20/04

0.3% ↓  
0.9% ↑  
0.9% ↓  
0.9% ↓  
1.0% ↓

Next Auction: 4<sup>th</sup> May - North Island: Est. 6,300 bales.



## Stock lots available:

### Scoured wool for prompt shipment:

Ref.	Type	Mic.	Y-Z	Length	VM	Tons	Location
S16796A	127/8 4/6"	36.9	0.5	LAC 105/74	0.1	20	SOLD
S16912A	127 4/6"	36.7	0.0	LAC 115/90	0.1	20	SOLD
S16912B	127 4/6"	36.4	0.1	LAC 111/88	0.1	20	SOLD
S16912C	127 4/6"	36.2	0.2	LAC 112/86	0.1	5.5**	NZ
S16855	734 Slipes 2/3"	31.0	-1.5	n/a	0.0	15**	NZ
S16937A	Superfine MER	15.9	-2.6	n/a	0.3	0.7	NZ

C46448 TOPS 27.26 97.2Hm 33.3CvH 5.2 tons ETA Italy 5 May

### Single Farm – GOTS Certified:

Ref.	Type	Mic.	Y-Z	LAC	VM	Tons	Location
S16421B	White Flc. 2/5"	22.7	-3.0	n/a	0.0	2.0**	NZ

\*\* Balance left



### RWS certified NZ Wool Tops ex Tianyu:

Lot Ref	Micron	Hm	CvH	Tons	Availability / Comments
C99055	21.7	80.6	39.1	5.0	Prompt ex ITALY



### Bloch & Behrens Wool (NZ) Ltd

A subsidiary of PGG Wrightson Ltd.

503 Blenheim Road, Sockburn  
Christchurch 8042  
PO Box 9024, Tower Junction  
Christchurch 8149,  
New Zealand

Email: [bbnz@blochwool.com](mailto:bbnz@blochwool.com)

## Proudly Certified to the following Standards:

